



PRICED AT
\$573,300

 1406 Sq Ft

 2 Beds

 2.0 Baths

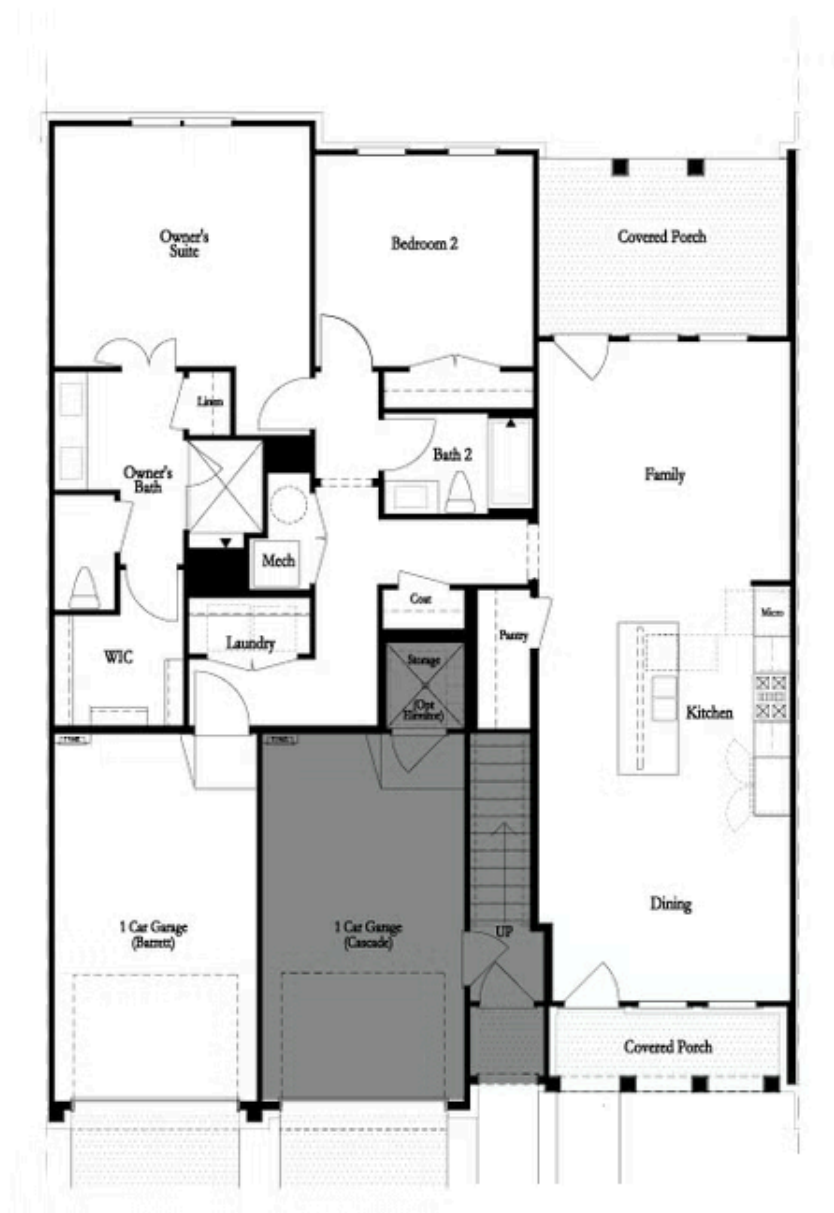
 1 Car Garage

 1.0 Story

YOUR HOME, YOUR WAY WITH \$25,000 ANY WAY! Customize your home buying journey - use it towards low rates, upgrades, appliances, closing costs & More. Ends AUG 31 2025. SINGLE LEVEL LIVING. No stairs throughout the entire home. Open concept upon entry into your front door. All units receive upgraded GE Profile Appliance Package including New State of the Art GE Profile Induction Electric Ranges. Room for several barstools on the island, kitchen leads into living room and out to exquisite fenced in front yard, all taken care of by the HOA. Spend evenings on your outdoor covered patio winding down with PRIVATE FENCED-IN YARD! Oversized Owner's Suite with Walk-In Closet, large shower and upgrades throughout! A perfect 2-bedroom plan with ample but manageable space. Secondary bedroom great for office or guest space. Door directly to garage inside unit, resident gets use of driveway behind their garage as well! Resort-Style Amenity package open for Homeowner use - NEW clubhouse with a fitness center, 4 pickleball courts, multiple fire pit areas, a pool with a pool deck looking out into the River and 3 green lawn spaces, HOA-maintained lawns, and gate at entrance. Amenities make meeting your neighbors and friends easy. LOCATION, ...

Want to Know More
About This Home?

CONTACT OUR COMMUNITY SALES MANAGER
Call Us @ 470.514.6999



Want to Know More
About This Home?

CONTACT OUR COMMUNITY SALES MANAGER
Call Us @ 470.514.6999