



PRICED AT
\$538,650

 **1862 Sq Ft**

 **2 Beds**

 **2.0 Baths**

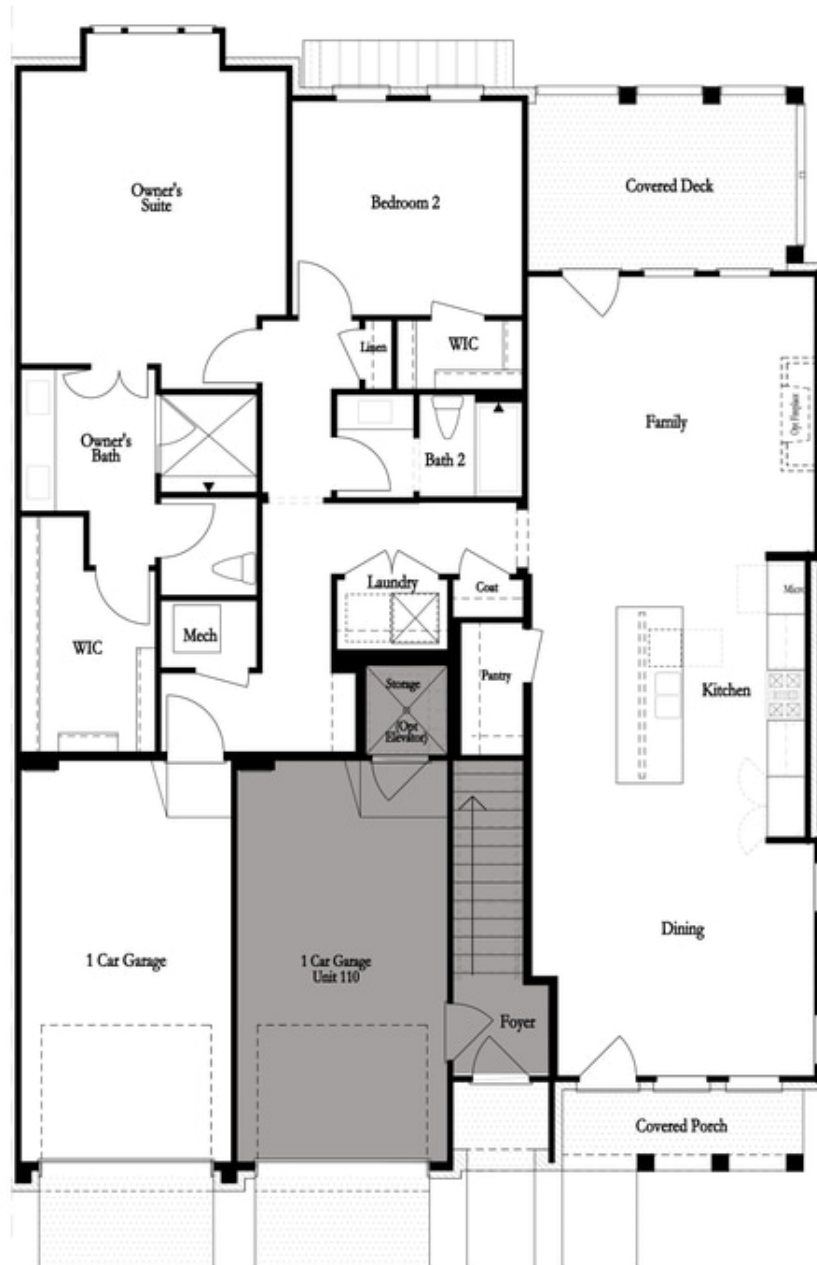
 **1 Car Garage**

 **1.0 Story**

Elevate your life in 2023 with a new home by The Providence Group and \$5,000 towards closing cost when financing with one of Seller's 4 preferred lenders. Excellent 2 bedroom End Unit Condo! Come and check out this home. The Baldwin floor plan is currently under construction in Peachtree Corners. Open the door to a spacious living room, kitchen and dining. Being an end unit, you will have extra windows in the dining room giving your home a light and airy feel. Best feature of this home is everything is on one floor. No stairs!! Bedrooms are very large in size, along with closets. Coming off of the family room, you have a covered deck which will make a great spot to start or end your day. The Classic Warmth Design Collection has beautiful, neutral tones that will make you feel right at home. All of this is located in a New Gated Master Planned Community backing up to the Chattahoochee River, surrounded by beautiful lush trees and the opportunity to take a walk down to the River or enjoy state of the art amenities w/Swim, fitness, parks, clubhouse, manned gate house etc. And one of the best things is ...

**Want to Know More
About This Home?**

CONTACT OUR COMMUNITY SALES MANAGER
Call Us @ 470.514.6999



**Want to Know More
About This Home?**

CONTACT OUR COMMUNITY SALES MANAGER
Call Us @ 470.514.6999



Want to Know More
About This Home?

CONTACT OUR COMMUNITY SALES MANAGER
Call Us @ 470.514.6999