

PRICED AT  
**\$589,900**

 1406 Sq Ft

 2 Beds

 2.0 Baths

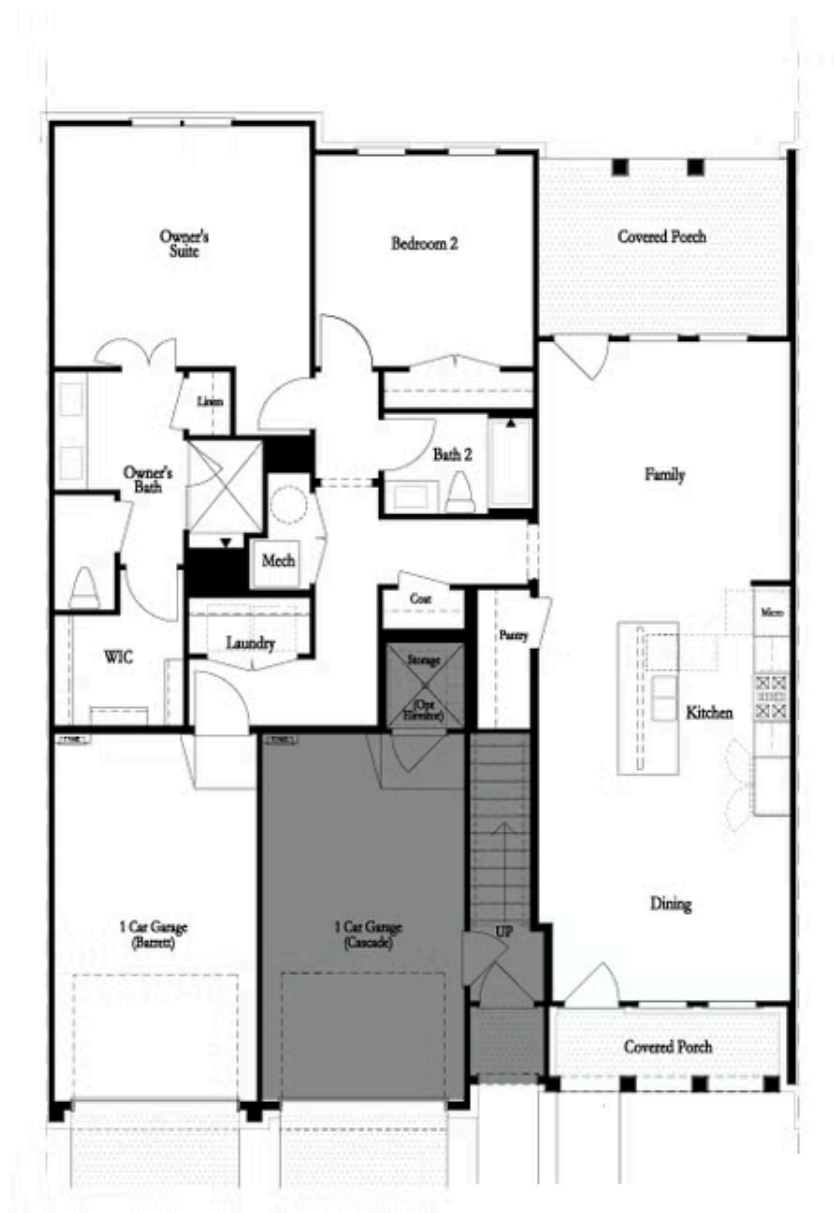
 1 Car Garage

 1.0 Story

New Year, New Home, New You with The Providence Group! Introducing The Barrett- Brand New plan and END UNIT! \$10,000 anyway with contract by end of January! No stairs throughout the entire home. Open concept upon entry into your front door! Rare, SINGLE LEVEL LIVING in our Exclusive Waterside Community! If your looking for the outdoors in a community, look no further! Waterside is a Master Planned Community nestled on the Chattahoochee River. Soaring ceilings throughout. Dining leads to a gorgeous kitchen with Cambria quartz countertops and an upgraded GE Profile Appliance Package. Cabinets in Bright White and an oversized island in Driftwood stain, for entertaining. The kitchen leads into a cozy living room and out to exquisite covered Porch, that spills into your private gated rear yard. Lovely Owner's Suite with walk-in closet, large shower and upgrades throughout! This wonderful 2-bedroom plan has the perfect amount of space! Connected garage with access inside the home and a driveway long enough for a second car! Includes washer/dryer/refrigerator and blinds!! Living in Waterside offers a laid-back lifestyle centered around enjoying nature and outdoor activities. Residents can spend their days exploring the river, walking through trails, birdwatching, or simply unwinding on the ...

**Want to Know More  
About This Home?**

CONTACT OUR COMMUNITY SALES MANAGER  
Call Us @ 470.514.6999



Want to Know More  
About This Home?

CONTACT OUR COMMUNITY SALES MANAGER  
Call Us @ 470.514.6999