




PRICED AT  
**\$495,900**

 1406 Sq Ft

 2 Beds

 2.0 Baths

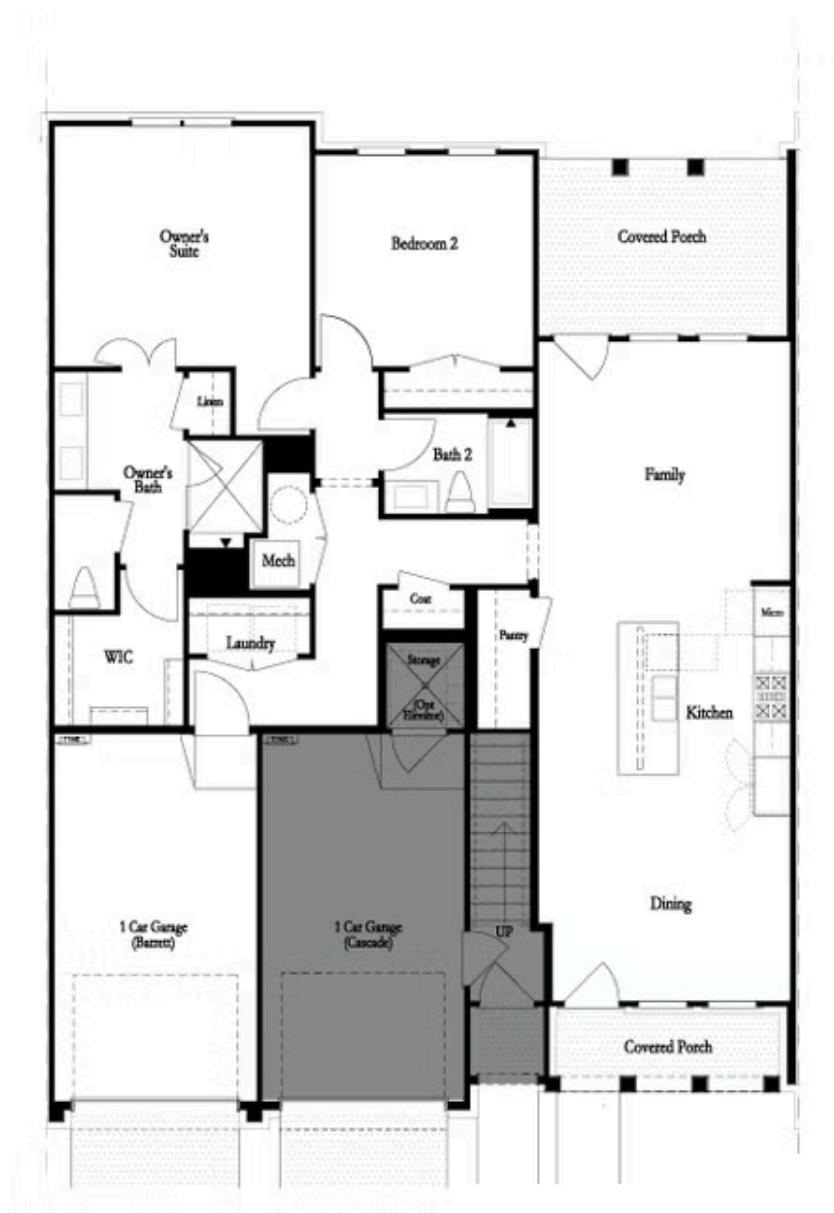
 1 Car Garage

 1.0 Story

ONE LEVEL LIVING at a phenomenal price! Price reflects \$10,000 Sales Incentive. Summer of Saving with a New Home with The Providence Group! Open concept upon entry into your front door. All units receive upgraded GE Profile Appliance Package including New State of the Art GE Profile Induction Electric Ranges. Room for several barstools on the island, kitchen leads into living room and out to exquisite fenced in front yard, all taken care of by the HOA. Spend evenings on your outdoor covered patio winding down. Oversized Owner's Suite with Walk-In Closet, large shower and upgrades throughout! A perfect 2-bedroom plan with ample but manageable space. Secondary bedroom great for office or guest space. Door directly to garage inside unit, resident gets use of driveway behind their garage as well! Resort-Style Amenity package open for Homeowner use - NEW clubhouse with a fitness center, 4 pickleball courts, multiple fire pit areas, a pool with a pool deck looking out into the River and 3 green lawn spaces, HOA-maintained lawns, and gate at entrance. Amenities make meeting your neighbors and friends easy. LOCATION, LOCATION, LOCATION! Less than 1 mile to The Forum Shopping Center & Peachtree Corners Towne Center. Don't let ...

**Want to Know More  
About This Home?**

CONTACT OUR COMMUNITY SALES MANAGER  
Call Us @ 470.514.6999



Want to Know More  
About This Home?

CONTACT OUR COMMUNITY SALES MANAGER  
Call Us @ 470.514.6999