



PRICED AT
\$686,900

 2008 Sq Ft

 3 Beds

 2.0 Baths

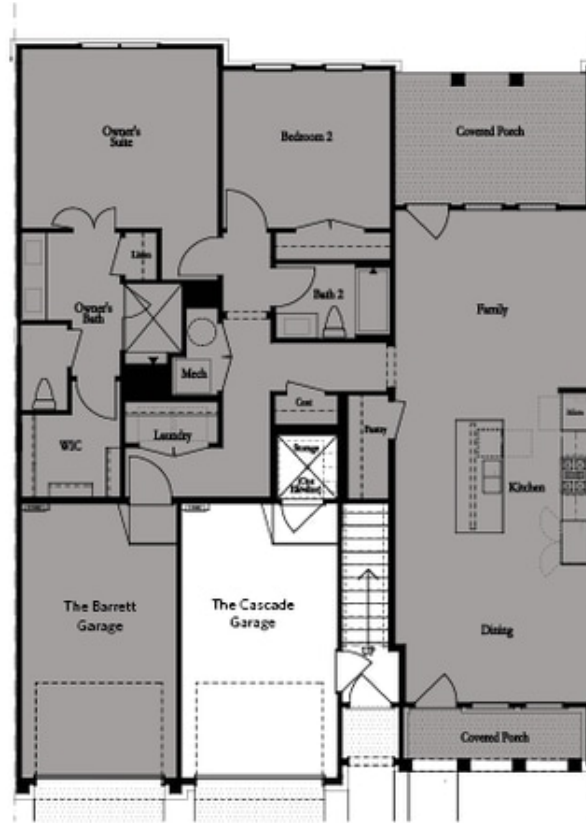
 1 Car Garage

 2.0 Story

Visit Waterside Today and Step into Sizzling Summer Savings! Attention to design detail is displayed throughout, from the modern kitchen featuring Britannica Quartz countertops, beige cabinets and driftwood stain island, and stainless appliances to the family room with its stylish linear fireplace- creating a perfect gathering space, leading out to a covered porch for enjoying the outdoors. The bedrooms with elevated ceiling heights add to the sense of luxury and comfort, with the owner's suite, specifically designed as a spacious sanctuary for relaxation, including a spa-like Owner's bathroom with upgrades galore. The freestanding tub invites you to unwind in ultimate comfort. Adjacent to the tub, the separate walk-in shower, featuring frameless glass and an oversized rain shower head. The arctic white quartz countertops provide a crisp, modern look that is both durable and easy to maintain. These countertops complement the warm, rustic driftwood stain cabinets. Gold fixtures and hardware add a touch of sophistication. Resort-style amenities, including a clubhouse with fitness center, pickleball courts, pool, and fire pit areas, add to the allure of this community, making it easy to connect with neighbors and friends. Luxurious, single-level living in exclusive Waterside by The Providence Group! Interested in visiting? It's important ...

**Want to Know More
About This Home?**

CONTACT OUR COMMUNITY SALES MANAGER
Call Us @ 470.514.6999



Garage Level

**Want to Know More
About This Home?**

CONTACT OUR COMMUNITY SALES MANAGER
Call Us @ 470.514.6999



**Want to Know More
About This Home?**

CONTACT OUR COMMUNITY SALES MANAGER
Call Us @ 470.514.6999