



PRICED AT
\$599,900

 1406 Sq Ft

 2 Beds

 2.0 Baths

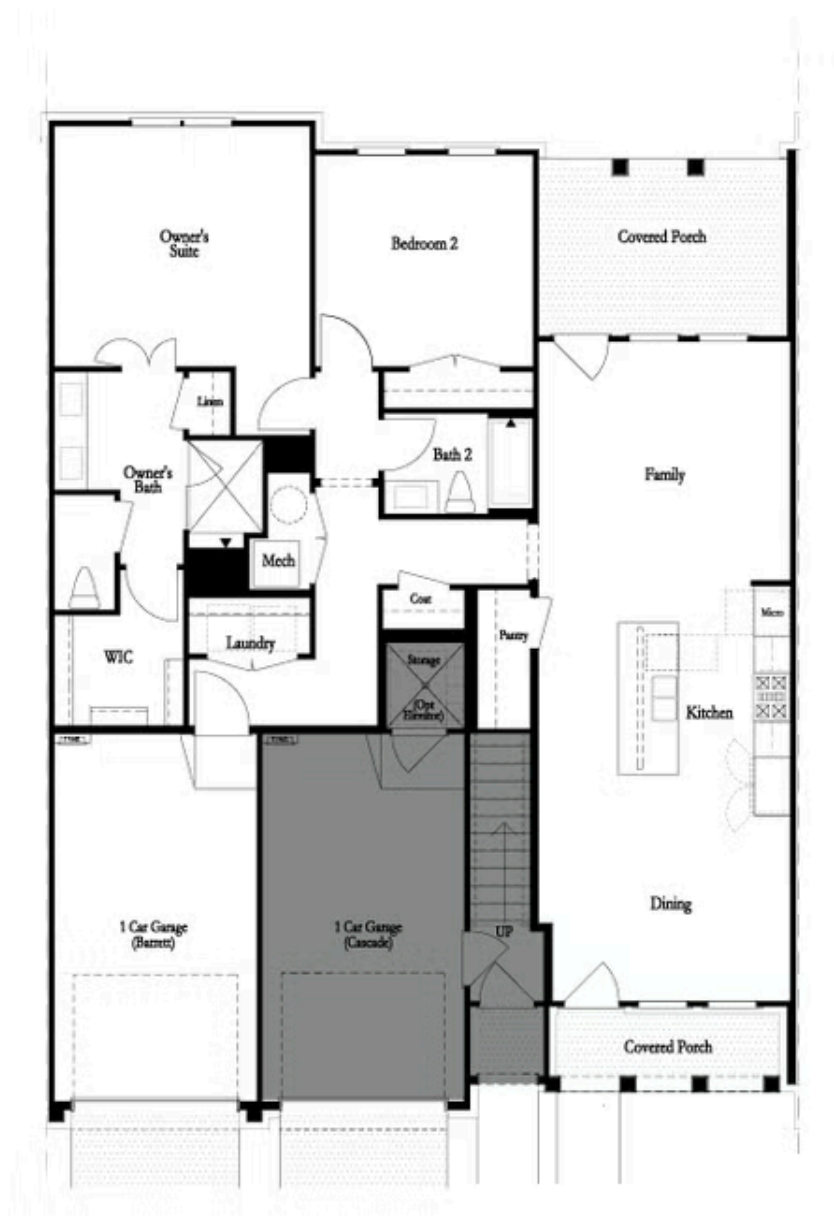
 1 Car Garage

 1.0 Story

Spring into a new home by The Providence Group! Rare, SINGLE LEVEL LIVING in our Exclusive Waterside Community! If your looking for the outdoors in a community, look no further! Waterside is a Master Planned Community nestled on the Chattahoochee River. FIRST RELEASES OF PHASE 2 - Introducing The Barrett- Brand New plan!! No stairs throughout the entire home. Open concept upon entry into your front door! Soaring ceilings throughout. Dining leads to a gorgeous kitchen with Quartz Countertops and an upgraded GE Profile Appliance Package. Oversized island, for entertaining. The kitchen leads into a cozy living room and out to exquisite covered Porch, that spills into your private rear yard. Lovely Owner's Suite with Walk-In Closet, large shower and upgrades throughout! This wonderful 2-bedroom plan has the perfect amount of space! Connected garage with access inside the home and a driveway long enough for a second car! Resort-Style Amenity package featuring an Elegant clubhouse with a fitness center, 4 pickleball courts, fire pit, a pool with a pool deck looking out to the Chattahoochee River. In addition, open green lawn spaces, HOA-maintained lawns, and a future manned gate at the entrance. Amenities make meeting your neighbors and friends easy. ...

**Want to Know More
About This Home?**

CONTACT OUR COMMUNITY SALES MANAGER
Call Us @ 470.514.6999



Want to Know More
About This Home?

CONTACT OUR COMMUNITY SALES MANAGER
Call Us @ 470.514.6999