



PRICED AT
\$663,190

 **2008 Sq Ft**

 **3 Beds**

 **2.0 Baths**

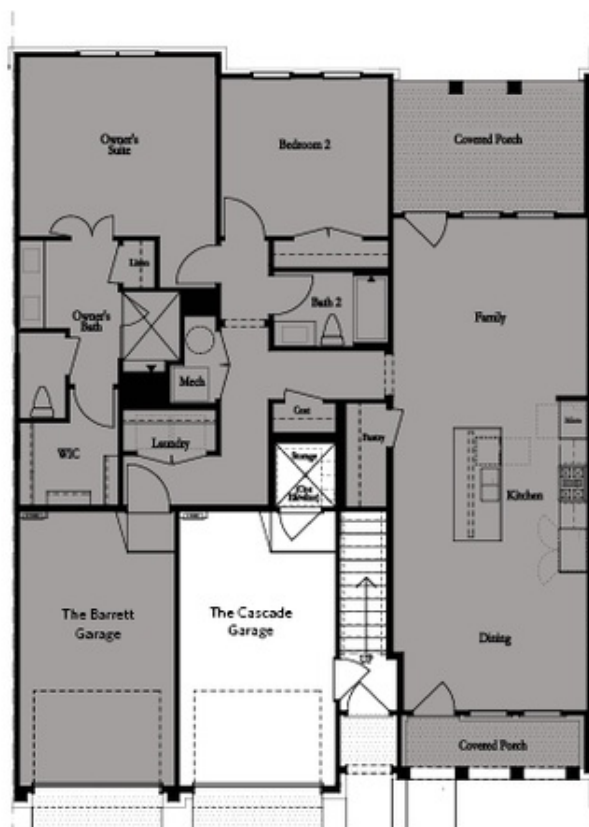
 **1 Car Garage**

 **2.0 Story**

Attention to design detail is displayed throughout this 3 bedroom 2 bathroom condo. The beautiful kitchen has Bright White cabinets, slate island, stainless GE appliances, sleek Cambria quartz countertops and a walk-in pantry. You will love this open concept! The family room includes a stylish linear fireplace- creating a perfect gathering space, leading out to a covered porch for enjoying the outdoors. The bedrooms with elevated ceiling heights add to the sense of luxury and comfort, with the owner's suite designed as a spacious sanctuary for relaxation. Step into the luxurious owner's suite bath, a haven of modern elegance, inviting you to unwind in its sleek, high-quality design. Adjacent to the freestanding tub, the separate walk-in shower with a large rain head offers a spa-like experience, with frameless glass and elegant tiling that add a touch of sophistication. The dual vanity features arctic white quartz countertops and ample storage with classic white cabinets, providing both beauty and functionality. Resort-style amenities, including a clubhouse with fitness center, pickleball courts, pool, and fire pit areas, add to the allure of this community, making it easy to connect with neighbors and friends. Luxurious, single-level living in exclusive Waterside by The Providence Group! Experience ...

**Want to Know More
About This Home?**

CONTACT OUR COMMUNITY SALES MANAGER
Call Us @ 470.514.6999



Garage Level

**Want to Know More
About This Home?**

**CONTACT OUR COMMUNITY SALES MANAGER
Call Us @ 470.514.6999**



**Want to Know More
About This Home?**

**CONTACT OUR COMMUNITY SALES MANAGER
Call Us @ 470.514.6999**