

PRICED AT
\$564,900

 1862 Sq Ft

 2 Beds

 2.0 Baths

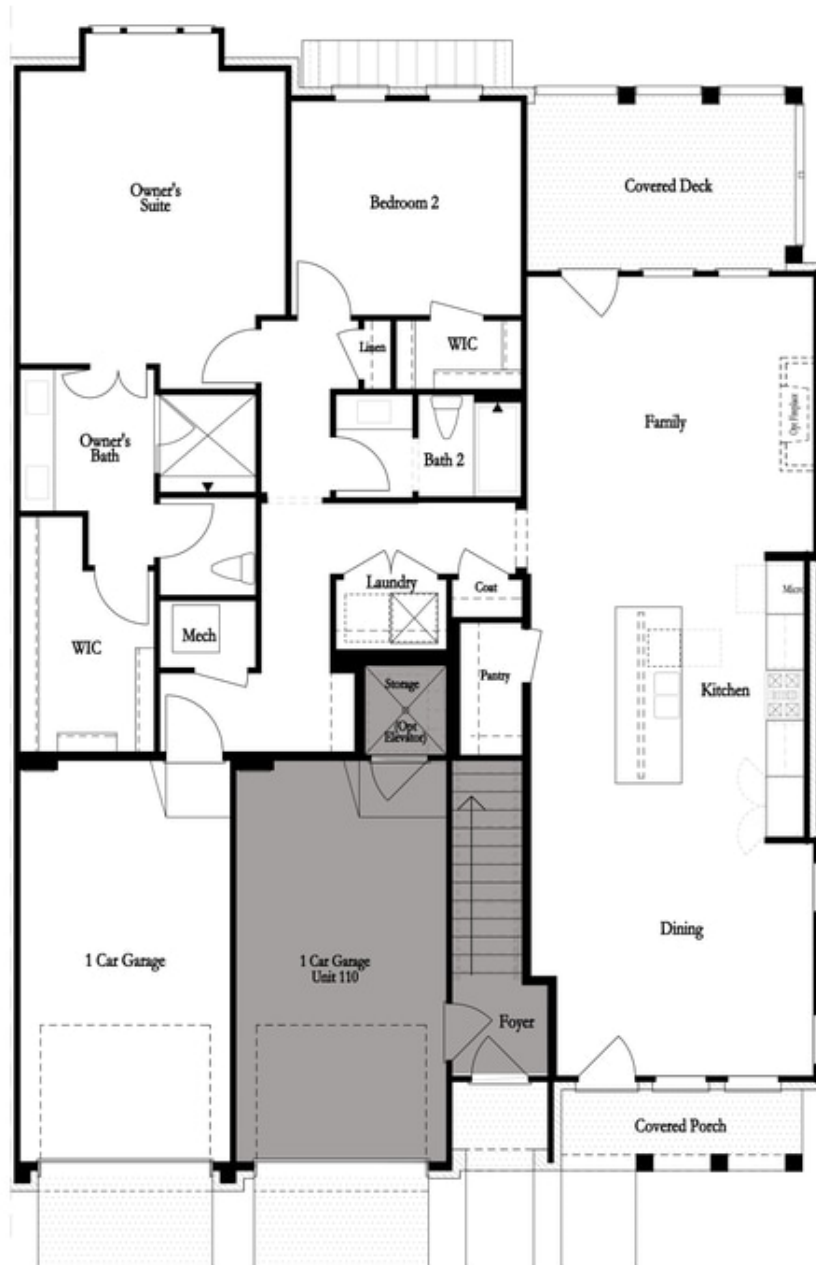
 1 Car Garage

 1.0 Story

Enjoy Fabulous Fall Savings with a new home by The Providence Group and \$5,000 towards closing cost when financing with one of Seller's preferred lenders. Welcome to Waterside, a River front Master Planned community in Peachtree Corners. The sought after Baldwin floor plan is back!! Incredible one level living! This open floor plan condo embodies contemporary living at its finest, seamlessly blending spaciousness, functionality, and versatility. Picture entering through the front door and being greeted by a vast, interconnected living space that encompasses the living room, dining area, and kitchen, all flowing seamlessly together. Just outside the living room, you're greeted by a private deck that extends the living space into the outdoors. The deck is thoughtfully designed with stylish railings, and which will make a great retreat to start or end your day. Imagine stepping into the luxurious owner's suite that feels like a serene escape within your own home. As you enter, you're greeted by a spacious bedroom, elegantly appointed with plush carpets. The room seamlessly transitions into a gorgeous, spa-like bath through a set of double doors. The bathroom is a sanctuary of relaxation and indulgence. The bath features a spacious walk-in shower with multiple showerheads and ...

**Want to Know More
About This Home?**

CONTACT OUR COMMUNITY SALES MANAGER
Call Us @ 470.514.6999



**Want to Know More
About This Home?**

CONTACT OUR COMMUNITY SALES MANAGER
Call Us @ 470.514.6999



**Want to Know More
About This Home?**

CONTACT OUR COMMUNITY SALES MANAGER
Call Us @ 470.514.6999