




PRICED AT
\$606,800

 2520 Sq Ft

 3 Beds

 2.0 Baths

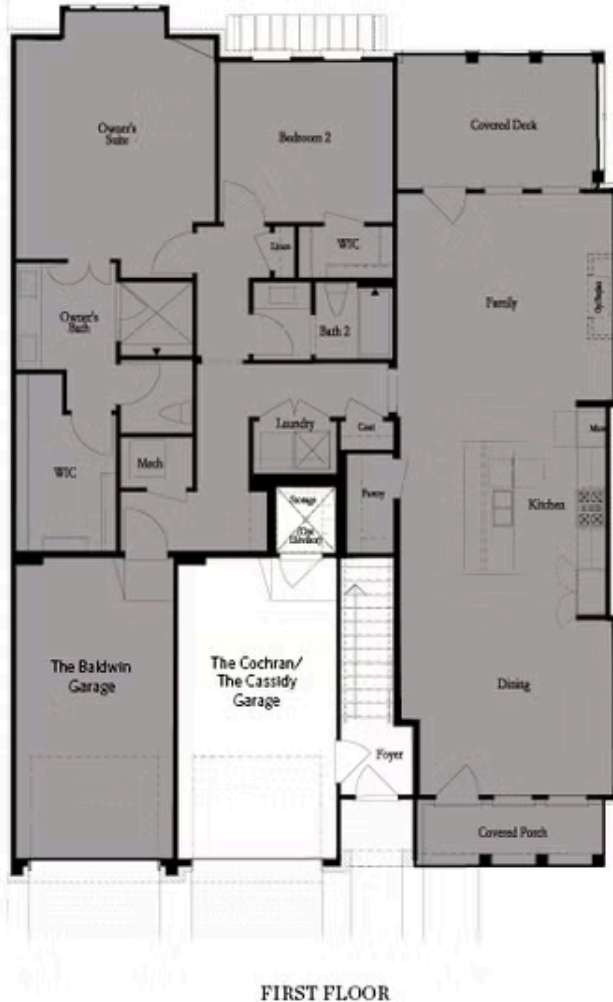
 1 Car Garage

 1.0 Story

Spacious Top Floor and closing on or before 10/31/2022. Being an end unit, you will have extra windows in the dining and family room making your home gleam with natural light. You really have to see this home, one of the best floor plans. Huge master with sitting area that leads to a covered porch, perfect for reading or a cup of coffee. Oversized shower and massive closet. Secondary bedrooms are a great size and have walk in closets. Great for extra storage. All of this is located in a New Gated Master Planned Community backing up to the Chattahoochee River, surrounded by beautiful lush trees and the opportunity to take a walk down to the River or enjoy state of the art amenities w/Swim, fitness, parks, clubhouse , etc. And one of the best things is that you are 1 mile from the Forum. Photos do not represent the actual home For driving directions, you can use 4411 E. Jones Bridge Road, Peachtree Corners, GA 30092

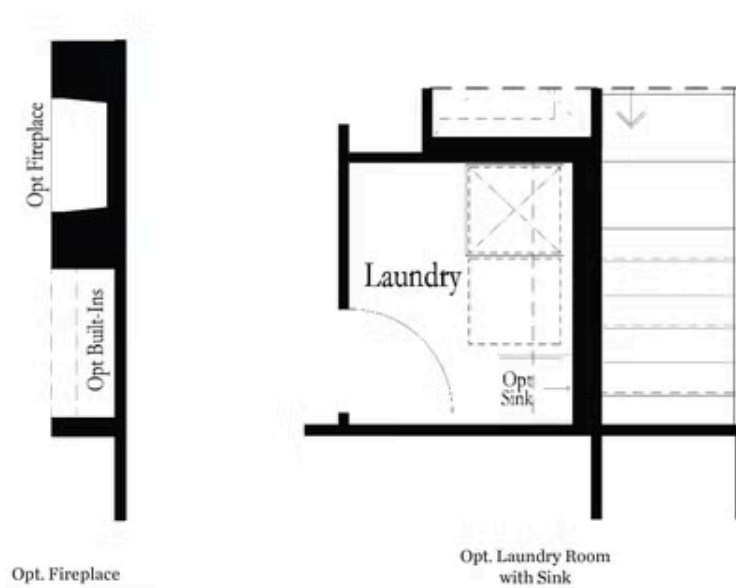
**Want to Know More
About This Home?**

CONTACT OUR COMMUNITY SALES MANAGER
Call Us @ 470.514.6999



Want to Know More
About This Home?

CONTACT OUR COMMUNITY SALES MANAGER
Call Us @ 470.514.6999



Want to Know More
About This Home?

CONTACT OUR COMMUNITY SALES MANAGER
Call Us @ 470.514.6999



SECOND FLOOR - LEFT END UNIT

Want to Know More
About This Home?

CONTACT OUR COMMUNITY SALES MANAGER
Call Us @ 470.514.6999



SECOND FLOOR - RIGHT END UNIT

Want to Know More
About This Home?

CONTACT OUR COMMUNITY SALES MANAGER
Call Us @ 470.514.6999