



PRICED AT
\$875,100

 2518 Sq Ft

 4 Beds

 3.0 Baths

 2 Car Garage

 2.0 Story

Introducing PHASE 3 at Waterside by The Providence Group! SINGLE FAMILY COTTAGES ARE BACK for a limited Time. Two car garage, rear load with full length driveway. Bedroom on Main, accompanied by family room, dining area, outdoor deck & patio. Covered front porch and side courtyard fenced in & maintained by HOA. Upstairs floor has Owner's Suite with balcony, large walk-in-closet. Two additional bedrooms and a loft. Buyer goes to Design Studio to pick out all interior finishes - beautiful upgrade options throughout the home. Private location in the rear of the community. Resort-Style Amenity package open for Homeowner use - OBIE AWARD Nominated Amenities- spectacular clubhouse with a fitness center, 4 pickleball courts, community firepit, a pool with a pool deck looking out into the River and green lawn spaces, HOA-maintained lawns, and gated at entrance. Amenities make meeting your neighbors and friends easy. Don't let this one miss you! Photos do not represent the actual home. For driving directions, you can use 4411 E. Jones Bridge Road, Peachtree Corners, GA 30092. At TPG, we value our customer, team member, and vendor team safety. Our communities are active construction zones and may not be safe to visit at certain ...

Want to Know More
About This Home?

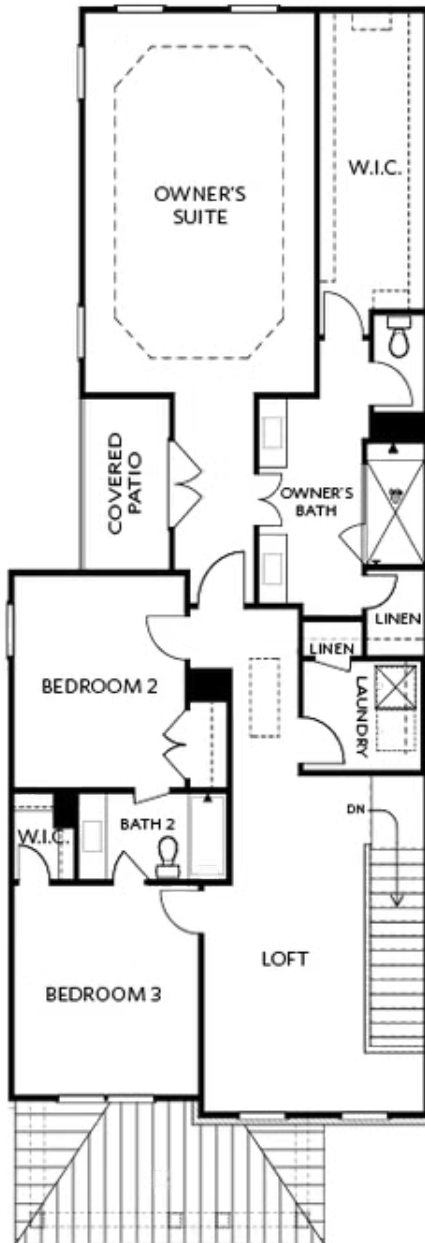
CONTACT OUR COMMUNITY SALES MANAGER
Call Us @ 470.514.6999



Elevation B

Want to Know More
About This Home?

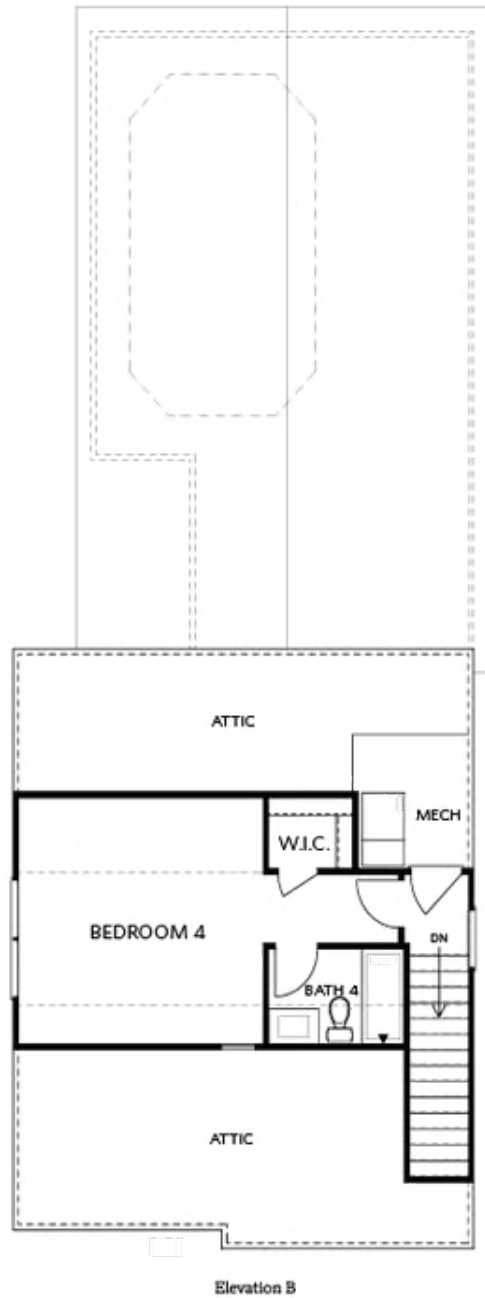
CONTACT OUR COMMUNITY SALES MANAGER
Call Us @ 470.514.6999



Elevation B

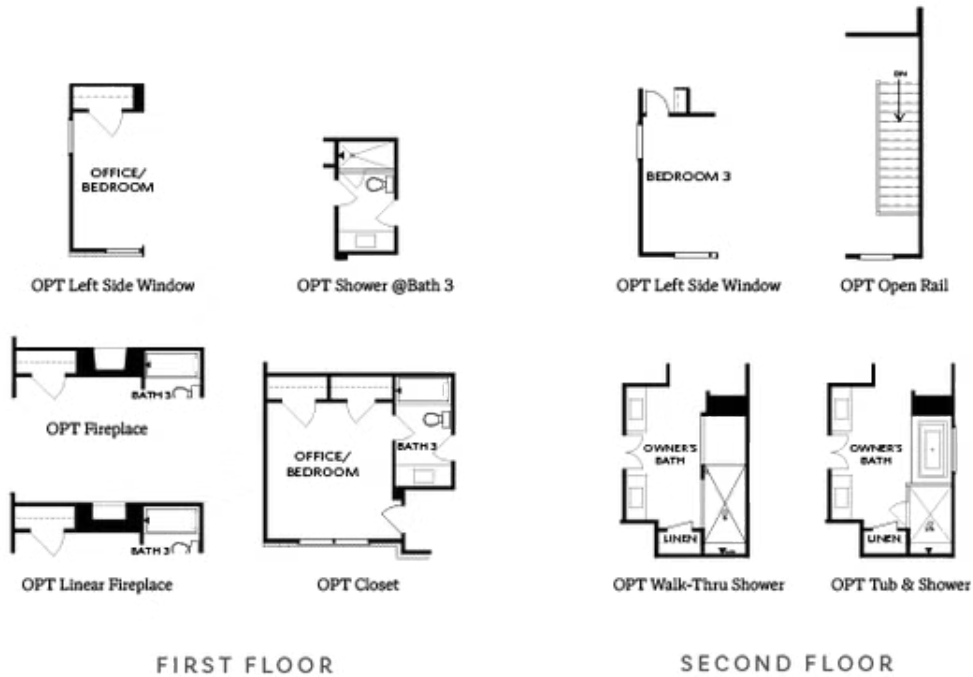
Want to Know More
About This Home?

CONTACT OUR COMMUNITY SALES MANAGER
Call Us @ 470.514.6999



Want to Know More
About This Home?

CONTACT OUR COMMUNITY SALES MANAGER
Call Us @ 470.514.6999



Want to Know More
About This Home?

CONTACT OUR COMMUNITY SALES MANAGER
Call Us @ 470.514.6999