




PRICED AT  
**\$780,265**

 2500 Sq Ft

 4 Beds

 3.5 Baths

 2 Car Garage

 2.0 Story

LAST MASTER-ON-MAIN OPPORTUNITIES! Beautiful Wooded location on the edge of the community; Buyer has the opportunity to pick interior design selections! Amazing community location with only 1 mile from The Forum w/ shops and restaurants. Waterside is a new, Master Plan gated community surrounded by trees backing up the Chattahoochee River. This plan offers 10' ceilings on the main; laundry and owner's suite on main for easy living. Kitchen is open to the family room w/fireplace and sliding doors out to a deck that runs the entire width of the home. Enjoy your private view overlooking the natural, completely wooded edge of the property. Oversized windows and walk-in closet in Owner's Suite. Security system prewire comes with the home. 3 additional bedrooms AND an open loft upstairs. Two car rear load garage with extra storage room. Access to your paver patio and fenced side yard from here as well. All landscape maintained by HOA - Pool, 2-Story clubhouse, full sized gym, walking trails along the Chattahoochee River, several Pickleball Courts and more! Resort style living tucked away. The community will have state-of-the-art amenities w/Swim, fitness, parks, clubhouse, fire pit, pickleball courts etc. For driving directions, you can use 4411 E. ...

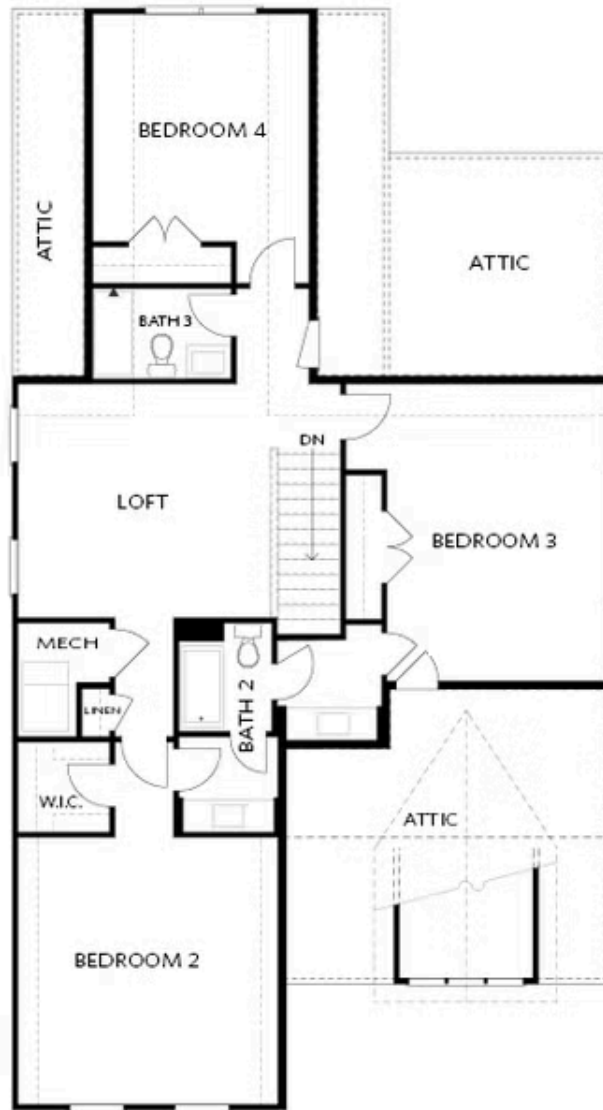
**Want to Know More  
About This Home?**

CONTACT OUR COMMUNITY SALES MANAGER  
Call Us @ 470.514.6999



Want to Know More  
About This Home?

CONTACT OUR COMMUNITY SALES MANAGER  
Call Us @ 470.514.6999



Elevation B

Want to Know More  
About This Home?

CONTACT OUR COMMUNITY SALES MANAGER  
Call Us @ 470.514.6999



OPT Large Shower



OPT Screened Patio



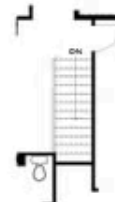
OPT 2nd Owner's Suite ilo BDR 3



OPT Linear Fireplace



OPT Fireplace



OPT Open Hand Rail

## FIRST FLOOR

## SECOND FLOOR

## OPTIONS

Want to Know More  
About This Home?

CONTACT OUR COMMUNITY SALES MANAGER  
Call Us @ 470.514.6999