



PRICED AT
\$758,820

 2388 Sq Ft

 3 Beds

 3.5 Baths

 2 Car Garage

 2.0 Story

LAST MASTER-ON-MAIN OPPORTUNITIES! Beautiful Wooded location on the edge of the community; Buyer has the opportunity to pick interior design selections! Amazing community location with only 1 mile from The Forum w/ shops and restaurants. Waterside is a new, Master Plan gated community surrounded by trees backing up the Chattahoochee River. This plan offers 10' ceilings on the main; laundry and owner's suite on main for easy living. Kitchen is open to the family room w/fireplace and sliding doors out to a deck that runs the entire width of the home. Enjoy your private view overlooking the natural, completely wooded edge of the property. Oversized windows and walk-in closet in Owner's Suite. Security system prewire comes with the home. 2 additional bedrooms AND an open loft upstairs. Two car rear load garage with extra storage room. Access to your paver patio and fenced side yard from here as well. All landscape maintained by HOA - Pool, 2-Story clubhouse, full sized gym, walking trails along the Chattahoochee River, several Pickleball Courts and more! Resort style living tucked away. The community will have state-of-the-art amenities w/Swim, fitness, parks, clubhouse, fire pit, pickleball courts etc. For driving directions, you can use 4411 E. ...

**Want to Know More
About This Home?**

CONTACT OUR COMMUNITY SALES MANAGER
Call Us @ 470.514.6999



FIRST FLOOR

Elevation B

**Want to Know More
About This Home?**

CONTACT OUR COMMUNITY SALES MANAGER
Call Us @ 470.514.6999



SECOND FLOOR

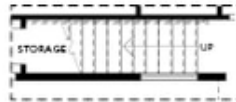
Elevation B

**Want to Know More
About This Home?**

CONTACT OUR COMMUNITY SALES MANAGER
Call Us @ 470.514.6999



OPT Walk-In Shower



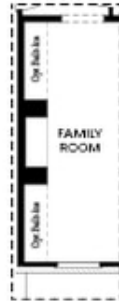
OPT Open Rail



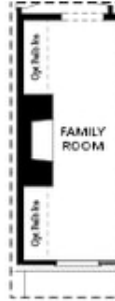
OPT Open Rail



OPT Side Windows



OPT Lenier Fireplace



OPT Fireplace



OPT BDR 4 ilo Loft

FIRST FLOOR

SECOND FLOOR

Elevation B

**Want to Know More
 About This Home?**

CONTACT OUR COMMUNITY SALES MANAGER
 Call Us @ 470.514.6999