



PRICED AT
\$770,200

 **2568 Sq Ft**

 **4 Beds**

 **3.5 Baths**

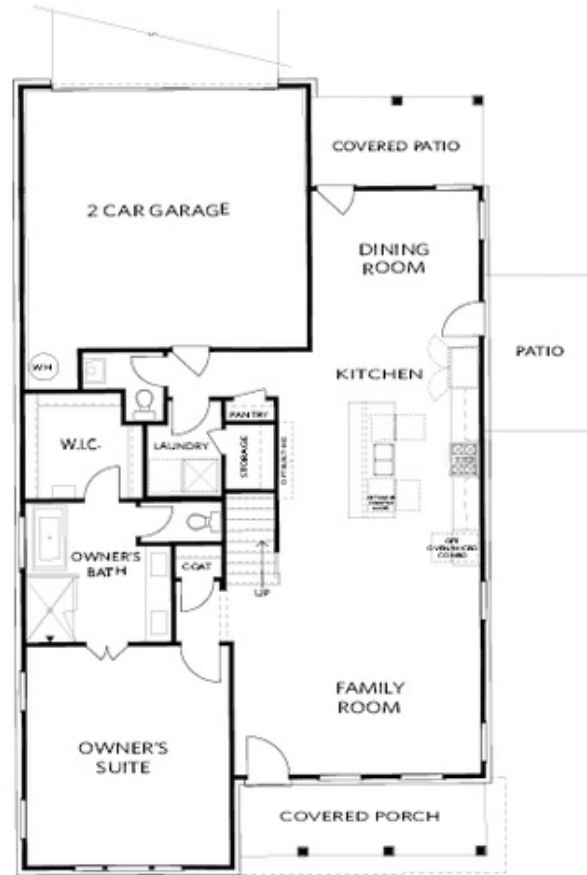
 **2 Car Garage**

 **2.0 Story**

The best of the best! This community will be packed with amenities- 4 pickle ball courts, a pool, fire pit areas, a clubhouse with a fitness center, green lawn spaces, and a manned gated entrance. And since the community meets the Chattahoochee River, we will have trails along the river. There will be a deck off of the pool looking out into the Chattahoochee River! The Hillsdale plan is not your typical master on the main house. The Providence Group always delivers a home that is elevated from the rest, and that's exactly what this looks and feels like. Nothing was missed in this home, even a prewire for an electric car charger is in the garage. Tankless hot water heater, once you have a tankless you will never go back to the standard hot water heater. The main floor is open and airy, there is the cutest screened-in porch off the back of the home in addition to your side patio, which is right off the kitchen - great for grilling. This home backs up to a beautiful and peaceful common area and this is your view off of your screened-in porch. OWNERS SUITE on the FIRST FLOOR, mega ...

**Want to Know More
About This Home?**

CONTACT OUR COMMUNITY SALES MANAGER
Call Us @ 470.514.6999

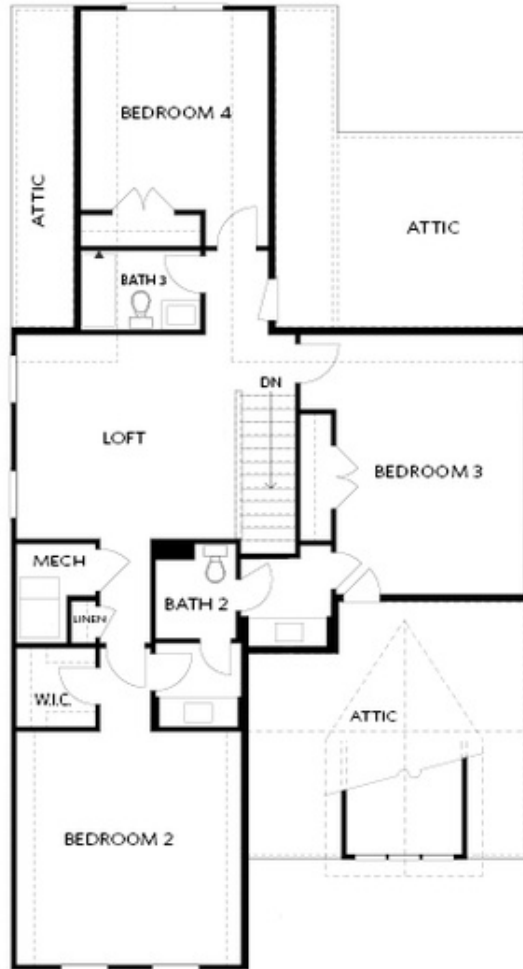


FIRST FLOOR

Elevation A

Want to Know More
About This Home?

CONTACT OUR COMMUNITY SALES MANAGER
Call Us @ 470.514.6999



SECOND FLOOR

Elevation B

Want to Know More
About This Home?

CONTACT OUR COMMUNITY SALES MANAGER
Call Us @ 470.514.6999



OPT Large Shower



OPT Screened Patio



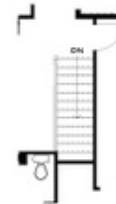
OPT 2nd Owner's Suite (BDR 3)



OPT Linear Fireplace



OPT Fireplace



OPT Open Hand Rail

FIRST FLOOR

SECOND FLOOR

OPTIONS

Want to Know More
 About This Home?

CONTACT OUR COMMUNITY SALES MANAGER
 Call Us @ 470.514.6999