



PRICED AT
\$770,200

 2568 Sq Ft

 4 Beds

 3.5 Baths

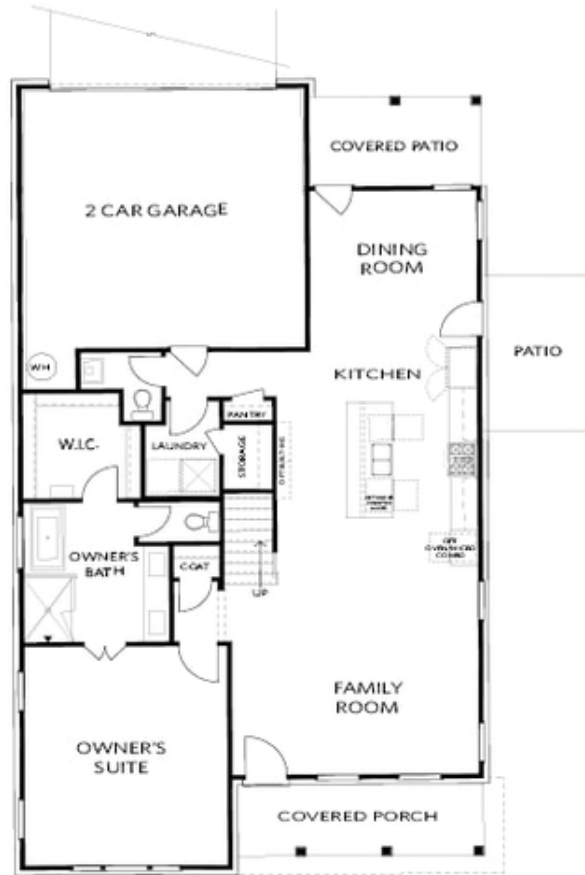
 2 Car Garage

 2.0 Story

The best of the best! This community will be packed with amenities- 4 pickle ball courts, a pool, fire pit areas, a clubhouse with a fitness center, green lawn spaces, and a manned gated entrance. And since the community meets the Chattahoochee River, we will have trails along the river. There will be a deck off of the pool looking out into the Chattahoochee River! The Hillsdale plan is not your typical master on the main house. The Providence Group always delivers a home that is elevated from the rest, and that's exactly what this looks and feels like. Nothing was missed in this home, even a prewire for an electric car charger is in the garage. Tankless hot water heater, once you have a tankless you will never go back to the standard hot water heater. The main floor is open and airy, there is the cutest screened-in porch off the back of the home in addition to your side patio, which is right off the kitchen - great for grilling. This home backs up to a beautiful and peaceful common area and this is your view off of your screened-in porch. OWNERS SUITE on the FIRST FLOOR, mega ...

**Want to Know More
About This Home?**

CONTACT OUR COMMUNITY SALES MANAGER
Call Us @ 470.514.6999

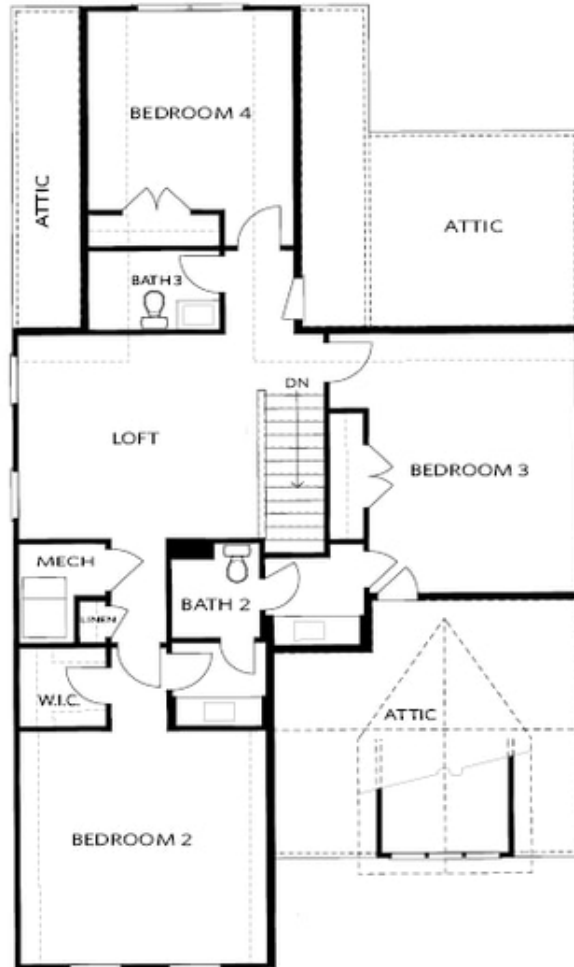


FIRST FLOOR

Elevation A

**Want to Know More
About This Home?**

CONTACT OUR COMMUNITY SALES MANAGER
Call Us @ 470.514.6999



SECOND FLOOR

Elevation A

**Want to Know More
About This Home?**

CONTACT OUR COMMUNITY SALES MANAGER
Call Us @ 470.514.6999



OPT Large Shower



OPT Screened Patio



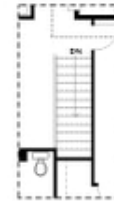
OPT 2nd Owner's Suite flo BDR 3



OPT Linear Fireplace



OPT Fireplace



OPT Open Hand Rail

FIRST FLOOR

SECOND FLOOR

Elevation A

**Want to Know More
 About This Home?**

CONTACT OUR COMMUNITY SALES MANAGER
 Call Us @ 470.514.6999