



PRICED AT  
**\$789,200**

 2574 Sq Ft

 4 Beds

 3.5 Baths

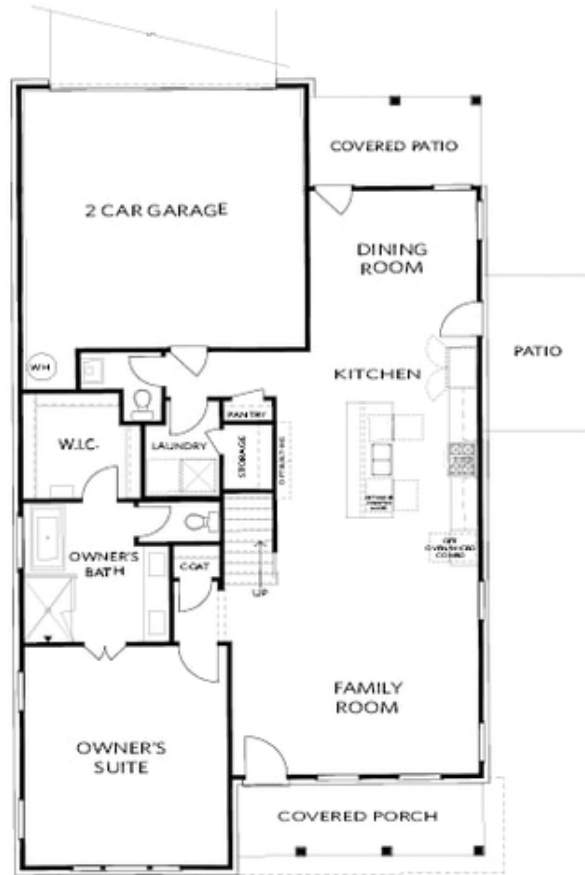
 2 Car Garage

 2.0 Story

Elevate your life in 2023! New Year New Price plus \$20k any way you want on all contracts written before 2/28/2023 and close 3/31/2023. See agents for details. **LOOKING FOR 2 OWNERS' SUITES? We have your fit at Waterside by The Providence Group!** New community only 1 mile from The Forum w/ shops and restaurants. Home is loaded with many upgrades and options it includes a linear fireplace in the family room, stacked white cabinets in the kitchen with a farmhouse sink, huge island to entertain with and much more. This home backs up to a green space that is maintained by the HOA. Gated community surrounded by trees and on the Chattahoochee River. 10' ceilings on the main 8' doors. Lower Owner's Suite on main includes spa-like bathroom and large closet. Additional private Owner's suite on the second floor, along with two additional bedrooms AND a loft. The community has state-of-the-art amenities that are under construction now, and will include pool w/bath house, fitness center in clubhouse, parks, clubhouse for meetings and entertaining, fire pits located in the parks, pickleball courts etc. Don't miss out on the great location of this home, and the gorgeous design features that have ...

**Want to Know More  
About This Home?**

CONTACT OUR COMMUNITY SALES MANAGER  
Call Us @ 470.514.6999

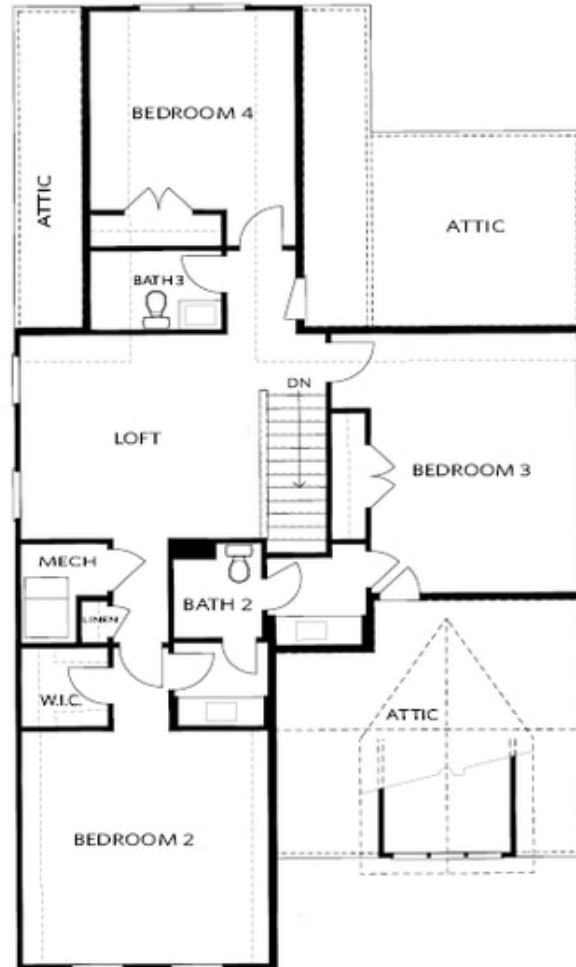


FIRST FLOOR

Elevation A

**Want to Know More  
About This Home?**

CONTACT OUR COMMUNITY SALES MANAGER  
Call Us @ 470.514.6999



SECOND FLOOR

Elevation A

**Want to Know More  
About This Home?**

CONTACT OUR COMMUNITY SALES MANAGER  
Call Us @ 470.514.6999



OPT Large Shower



OPT Screened Patio



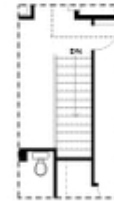
OPT 2nd Owner's Suite flo BDR 3



OPT Linear Fireplace



OPT Fireplace



OPT Open Hand Rail

FIRST FLOOR

SECOND FLOOR

Elevation A

**Want to Know More  
 About This Home?**

CONTACT OUR COMMUNITY SALES MANAGER  
 Call Us @ 470.514.6999