



PRICED AT
\$636,190

 2260 Sq Ft

 4 Beds

 3.5 Baths

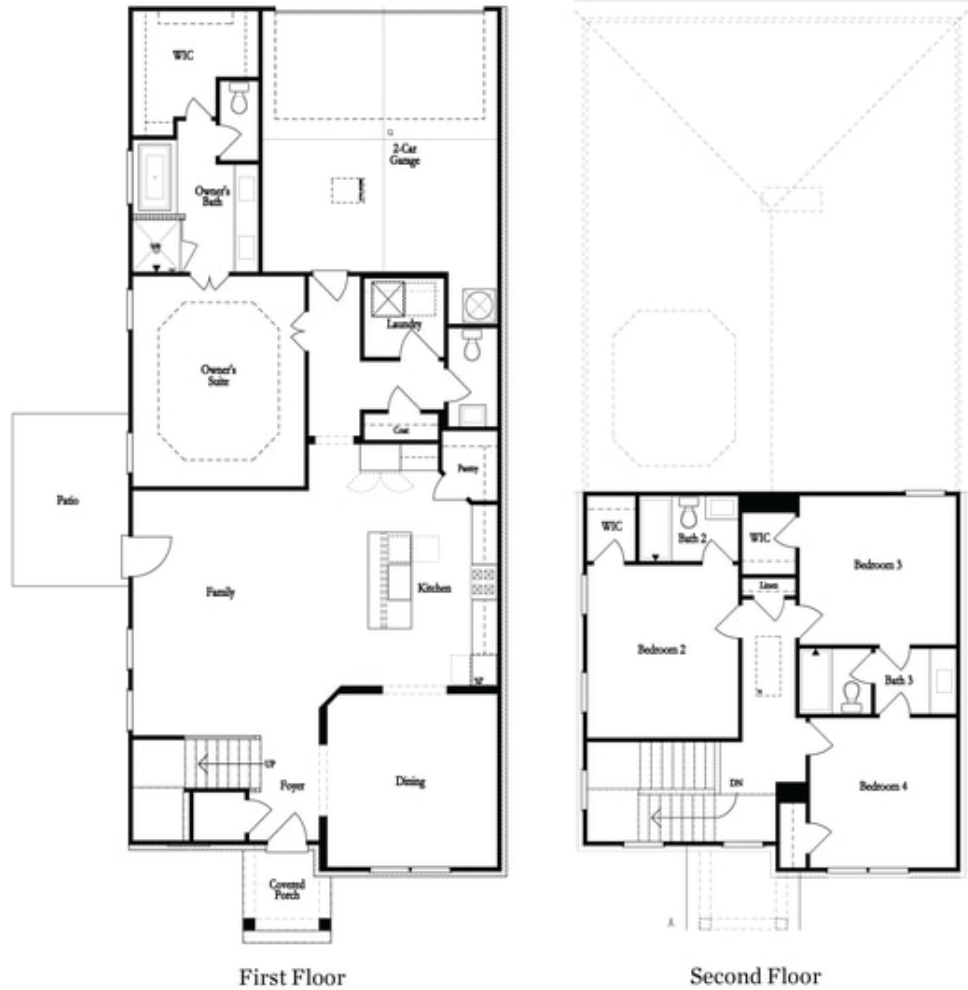
 2 Car Garage

 2.0 Story

CHARLESTON B Home Design. UNDER CONSTRUCTION. A Gated Master Planned Community on the Chattahoochee River, 1 mile from The Forum w/shops & restaurants, heart of Peachtree Corners. Single family home w/MASTER ON MAIN, yards to be maintained by HOA for ease of enjoyment, gated for privacy, the opportunity to take a walk down by the Chattahoochee River or enjoy state of the art Amenities w/Swim, fitness, parks, clubhouse, etc. This includes a fenced yard, double garage, open plan. **UNDER CONSTRUCTION!** Fabulous location can walk to shops and park. Showings are by appointment only at this time. A digital brochure can be received by signing up for the VIP list. Confirmation email will automatically send the brochure. For driving directions you can use 4411 E. Jones Bridge Road, Peachtree Corners, GA 30092.

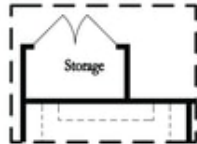
**Want to Know More
About This Home?**

CONTACT OUR COMMUNITY SALES MANAGER
Call Us @ 470.514.6999

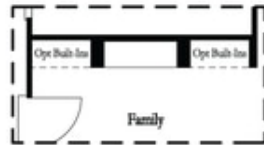


**Want to Know More
About This Home?**

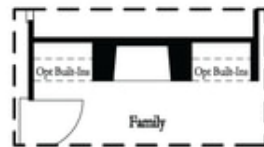
CONTACT OUR COMMUNITY SALES MANAGER
Call Us @ 470.514.6999



Optional Storage Room

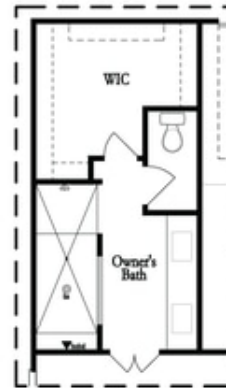


Optional Linear Fireplace



Optional Direct Vent Fireplace

First Floor Options



Optional Walk-Thru Shower

Second Floor Options

**Want to Know More
 About This Home?**

CONTACT OUR COMMUNITY SALES MANAGER
 Call Us @ 470.514.6999