



PRICED AT
\$626,200

 **2260 Sq Ft**

 **4 Beds**

 **3.5 Baths**

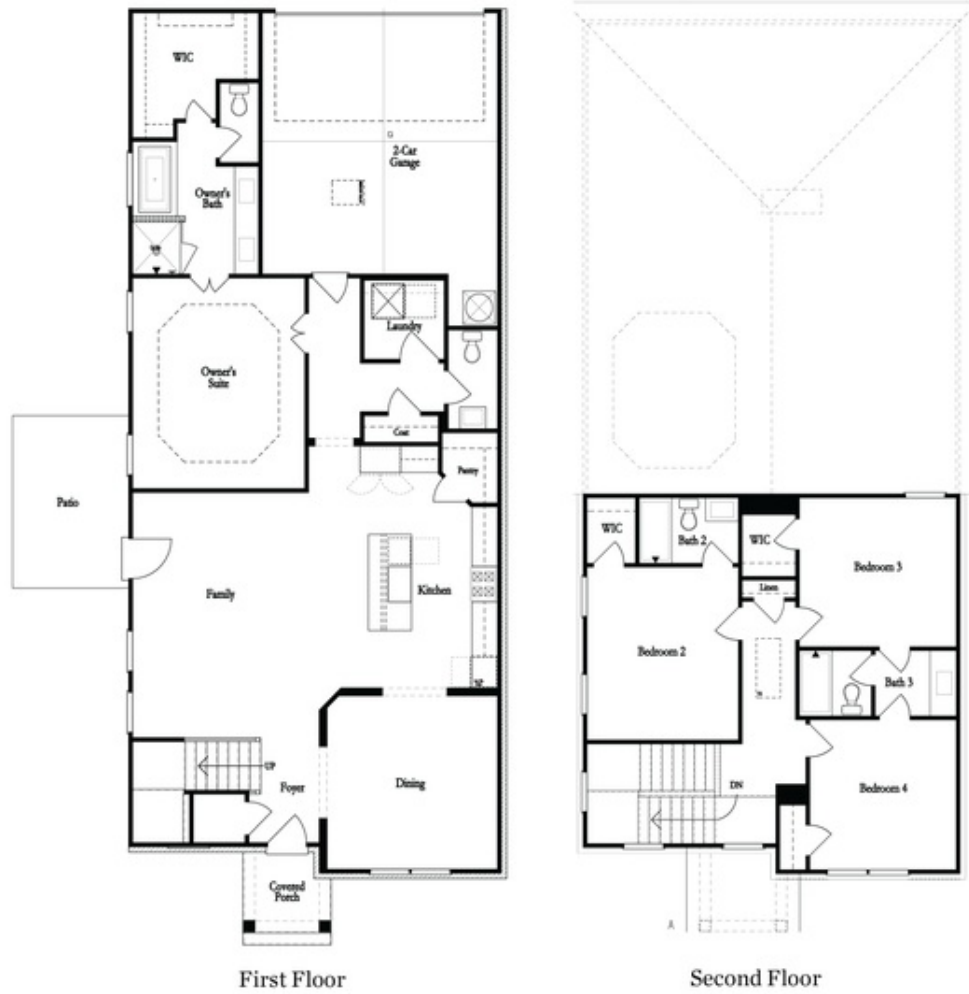
 **2 Car Garage**

 **2.0 Story**

Charleston C Home Design. UNDER CONSTRUCTION. A Gated Master Planned Community on the Chattahoochee River, 1 mile from The Forum w/shops & restaurants, in the heart of Peachtree Corners. We are designed to be an AGE IN PLACE community with single family homes w/master on main, yards to be maintained for ease of enjoyment, gated for privacy, and the opportunity to take a walk down to the River or enjoy state of the art Amenities w/Swim, fitness, parks, clubhouse, etc. This single family is a master on main plan, fenced yard, double garage, open plan. HOME IS FOUNDATION ONLY. Showings are by appointment only at this time. A digital brochure can be received by signing up for the VIP list. Confirmation email will automatically send the brochure. For driving directions you can use 4411 E. Jones Bridge Road, Peachtree Corners, GA 30092.

**Want to Know More
About This Home?**

CONTACT OUR COMMUNITY SALES MANAGER
Call Us @ 470.514.6999

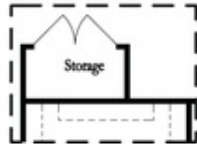


First Floor

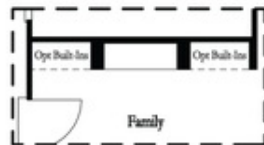
Second Floor

Want to Know More
 About This Home?

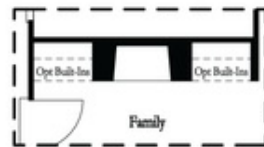
CONTACT OUR COMMUNITY SALES MANAGER
 Call Us @ 470.514.6999



Optional Storage Room

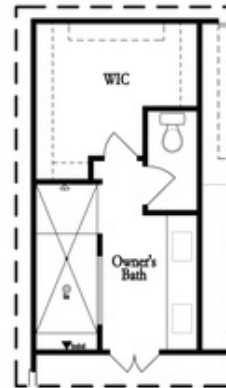


Optional Linear Fireplace



Optional Direct Vent Fireplace

First Floor Options



Optional Walk-Thru Shower

Second Floor Options

Want to Know More
About This Home?

CONTACT OUR COMMUNITY SALES MANAGER
Call Us @ 470.514.6999