



PRICED AT  
**\$1,444,400**

 4234 Sq Ft

 4 Beds

 5.0 Baths

 2 Car Garage

 2.0 Story

Sizzling Summer Savings with \$5,000 towards with our preferred lenders on a new home by The Providence Group! Come see the Serene Gated Master Planned Community Waterside in Peachtree Corners! Unique opportunity to own a home on the Chattahoochee River! Introducing The Olmstead Plan, a classic French Tudor. As you enter the main floor you are greeted with soaring ceilings. You pass a private office space with glass French doors. The breathtaking chef's kitchen will feature custom Bell cabinetry with soft close doors/drawers, spectacular monogram appliances and stunning island with cabinets on both sides. The spacious dining room is open to host all of your dinner parties. Next you come to the inviting family room to view the tranquil outdoors! This home features a Owners suite on main with private covered deck overlooking the Chattahoochee River. Luxurious Owners on-suite has tiled bath and a gorgeous soaking tub. In addition, on the second floor there are two spacious bedrooms with their own private on-suite and a roomy loft. The Terrace level is a spectacular place to entertain with a custom wet bar and oversized island, media room and a fourth bedroom. It also adds a touch of luxury and sophistication to ...

**Want to Know More  
About This Home?**

CONTACT OUR COMMUNITY SALES MANAGER  
Call Us @ 470.514.6999



BASEMENT

Elevation A

**Want to Know More  
About This Home?**

CONTACT OUR COMMUNITY SALES MANAGER  
Call Us @ 470.514.6999

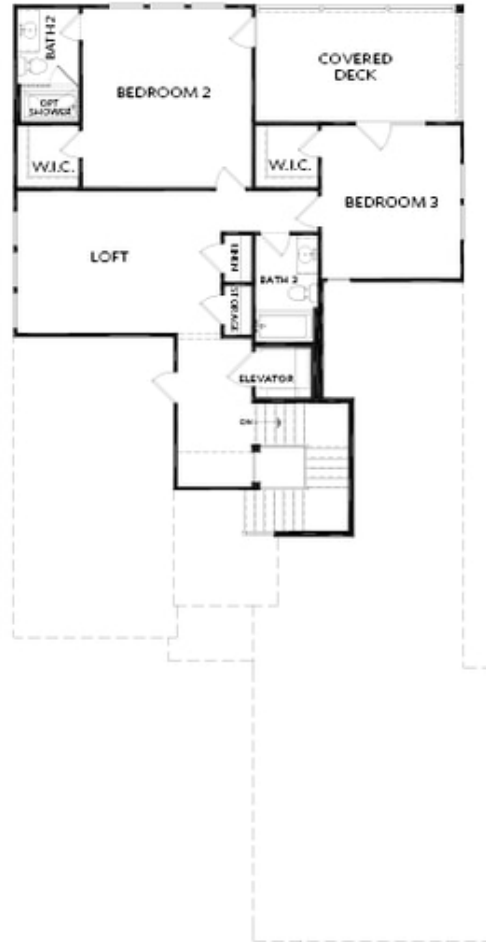


FIRST FLOOR

Elevation A

**Want to Know More  
About This Home?**

CONTACT OUR COMMUNITY SALES MANAGER  
Call Us @ 470.514.6999



SECOND FLOOR

Elevation A

**Want to Know More  
About This Home?**

CONTACT OUR COMMUNITY SALES MANAGER  
Call Us @ 470.514.6999