



PRICED AT
\$923,975

 **3103 Sq Ft**

 **4 Beds**

 **3.5 Baths**

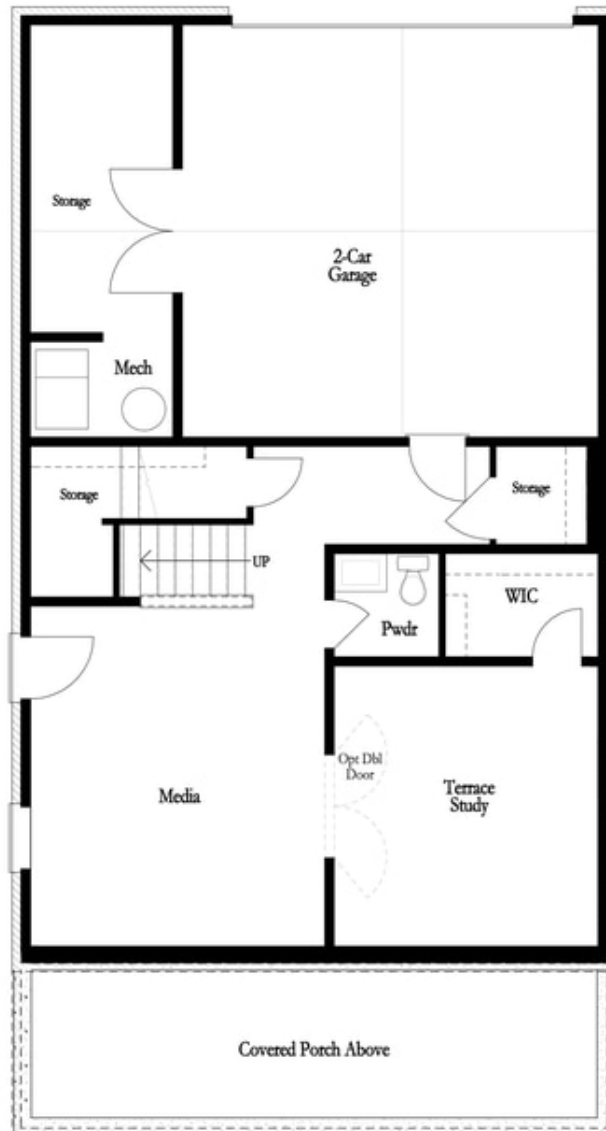
 **2 Car Garage**

 **3.0 Story**

Elevate your life in 2023 with a new home by The Providence Group and \$5,000 towards closing cost when financing with one of Seller's 4 preferred lenders. This is it! The Manchester C home design, One of the most sought-after home designs in one of the best locations in the community. You are greeted by a large covered front porch that really makes a statement. Open the front door to a beautifully designed open floor plan with abundant natural light. The kitchen is magnificent and designed very well with tons of cabinets and counter space. The main floor has 10' ceilings. Warm up on chilly evenings by your family room fireplace or head outside to the Awesome covered porch off the kitchen with a view of the prettiest green trees. Enjoy coffee or your beverage of choice here. Another cool feature is your fenced courtyard. The spacious owners suite has a luxurious bath with separate tiled shower, a freestanding tub and dual vanity. The upper floor has 2 additional bedrooms with a shared bath and the laundry room is conveniently situated close to the bedrooms. The terrace level has a private bedroom and bath and a large media room for ...

**Want to Know More
About This Home?**

CONTACT OUR COMMUNITY SALES MANAGER
Call Us @ 470.514.6999



Basement Floor

Want to Know More
About This Home?

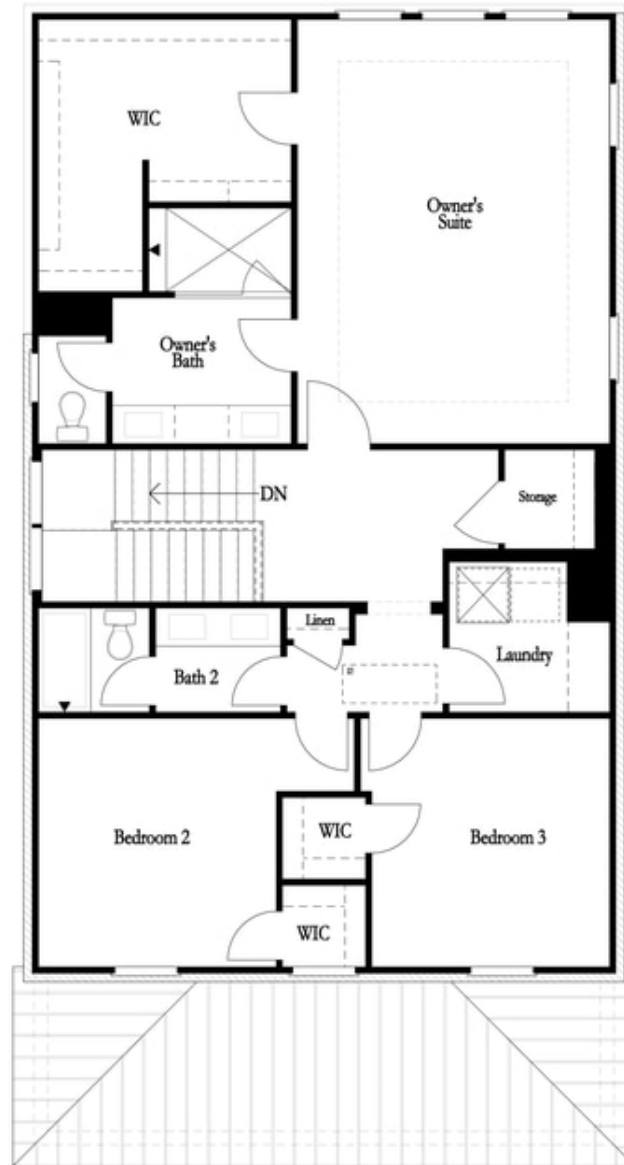
CONTACT OUR COMMUNITY SALES MANAGER
Call Us @ 470.514.6999



First Floor

Want to Know More
About This Home?

CONTACT OUR COMMUNITY SALES MANAGER
Call Us @ 470.514.6999

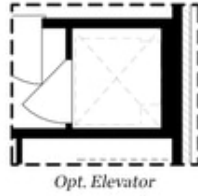


Second Floor

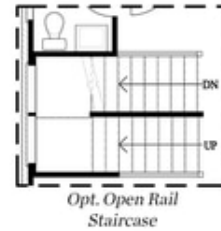
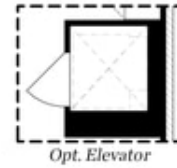
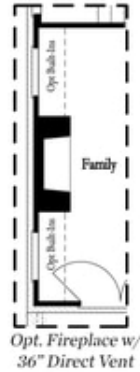
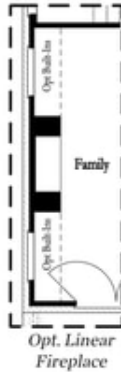
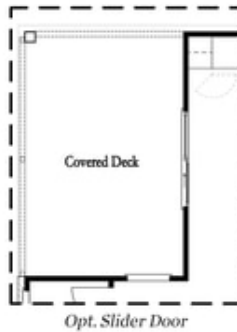
**Want to Know More
About This Home?**

CONTACT OUR COMMUNITY SALES MANAGER
Call Us @ 470.514.6999

Options



Basement Floor Options



First Floor Options

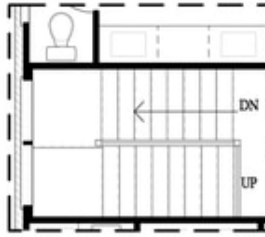
**Want to Know More
 About This Home?**

CONTACT OUR COMMUNITY SALES MANAGER
Call Us @ 470.514.6999

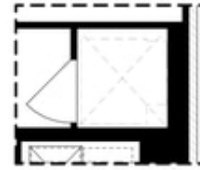
Options



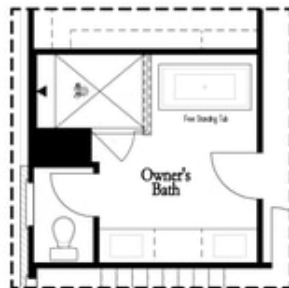
Opt. Laundry Sink



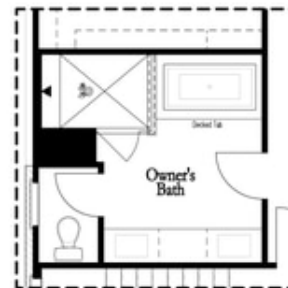
Opt. Open Rail Staircase



Opt. Elevator



Opt. Freestanding Tub



Opt. Decked Tub

Second Floor Options

**Want to Know More
 About This Home?**

CONTACT OUR COMMUNITY SALES MANAGER
Call Us @ 470.514.6999