



PRICED AT
\$1,584,300

 4293 Sq Ft

 4 Beds

 5.0 Baths

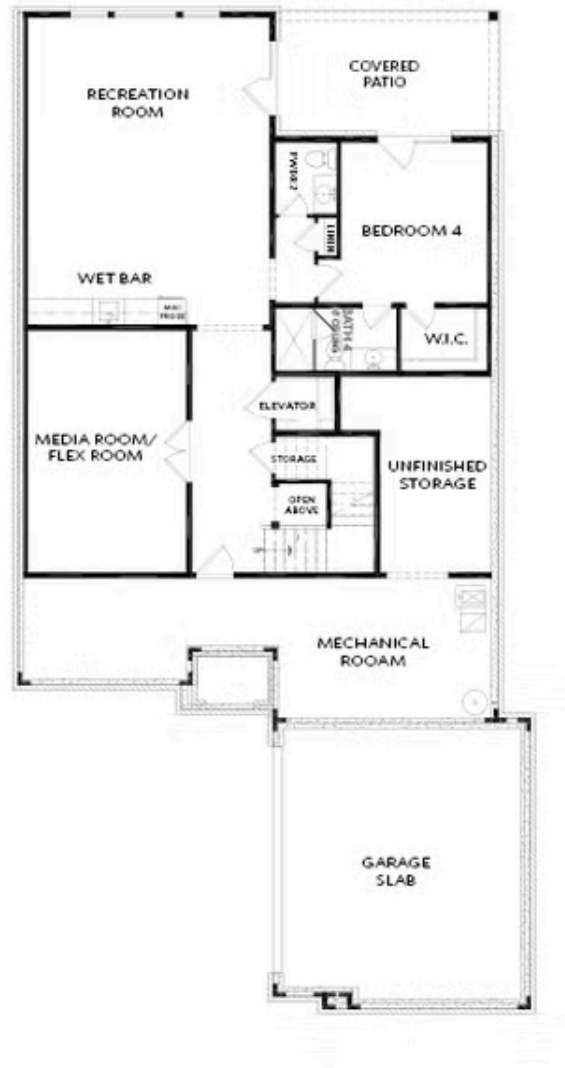
 2 Car Garage

 3.0 Story

Spring into a New home with \$25,000 ANYWAY and \$20,000 towards closing costs with our preferred lenders on a new home by The Providence Group closing by April 2025! Quick move-in! Come see the Serene Gated Master Planned Community Waterside in Peachtree Corners! Unique opportunity to own a home on the Chattahoochee River! Introducing The Oakhurst Plan, a classic craftsman home. As you enter the main floor you are greeted with soaring ceilings. You pass a private office space with glass French doors. Imagine a sophisticated, open-concept kitchen designed to blend warmth with a touch of luxury. The space is centered around a grand waterfall island with elegant Calacatta Laza Oro countertops, whose creamy white surface is marbled with soft gold veining, creating a perfect harmony with the gold accents throughout. The cabinetry is a warm, wheat tone that reaches up to the ceiling, giving the kitchen a seamless, polished look and maximizing storage. These cabinets have a smooth, minimalist finish, allowing the color and material to shine as a design feature on their own. The appliances are from Thermador, renowned for their sleek, high-performance design, and they integrate effortlessly into the space. The stainless steel oven, stove, and dishwasher ...

**Want to Know More
About This Home?**

CONTACT OUR COMMUNITY SALES MANAGER
Call Us @ 470.514.6999



BASEMENT

Elevation A

Want to Know More
About This Home?

CONTACT OUR COMMUNITY SALES MANAGER
Call Us @ 470.514.6999



Want to Know More
About This Home?

CONTACT OUR COMMUNITY SALES MANAGER
Call Us @ 470.514.6999



Want to Know More
About This Home?

CONTACT OUR COMMUNITY SALES MANAGER
Call Us @ 470.514.6999



OPT Slider Door at Covered Deck

OPTIONS

Want to Know More
About This Home?

CONTACT OUR COMMUNITY SALES MANAGER
Call Us @ 470.514.6999