



PRICED AT  
**\$855,165**

 **3103 Sq Ft**

 **4 Beds**

 **3.5 Baths**

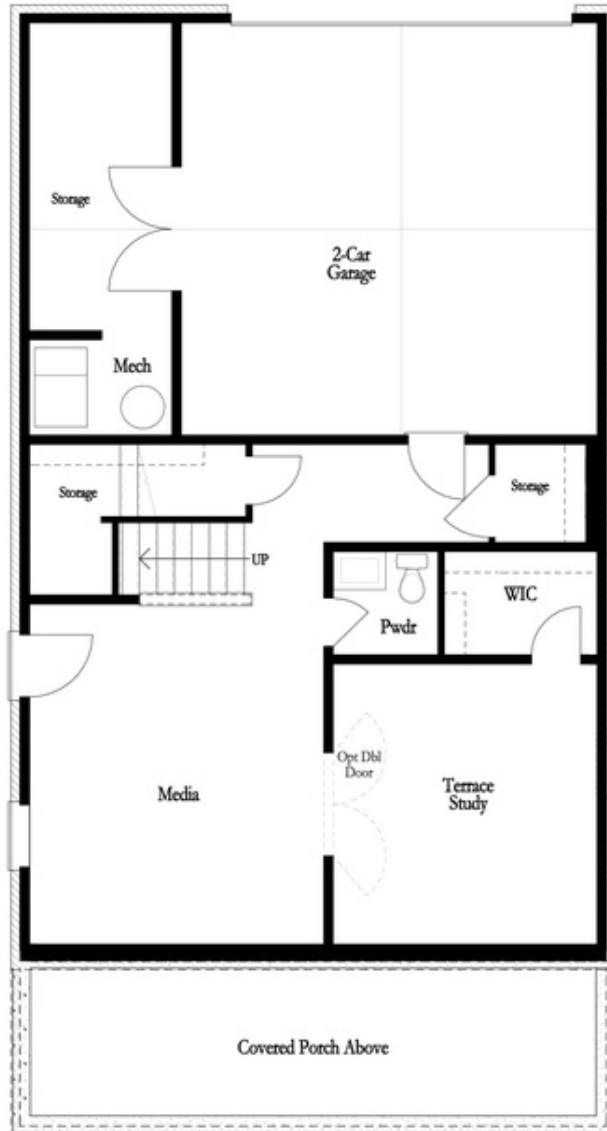
 **2 Car Garage**

 **3.0 Story**

**Perfect location in the Community! You can walk to restaurants, shopping and the Chatahoochee River! 10' ceiling throughout the main level. The Kitchen has the most wonderful view, right under your kitchen sink is a triple window looking out to lush trees. Upstairs offer the owners bedroom and bath plus 2 additional bedrooms sharing another bath. Buyers still have time to get creative and personalize this home at our Design Studio. The community is surrounded by beautiful landscape and state of the art amenities w/Swim, fitness, parks, clubhouse, fire pits, pickle ball courts etc. For driving directions you can use 4411 E. Jones Bridge Road, Peachtree Corners, GA 30092. Photos are not of actual home but similar plan.**

**Want to Know More  
About This Home?**

**CONTACT OUR COMMUNITY SALES MANAGER  
Call Us @ 470.514.6999**



**Basement Floor**

**Want to Know More  
About This Home?**

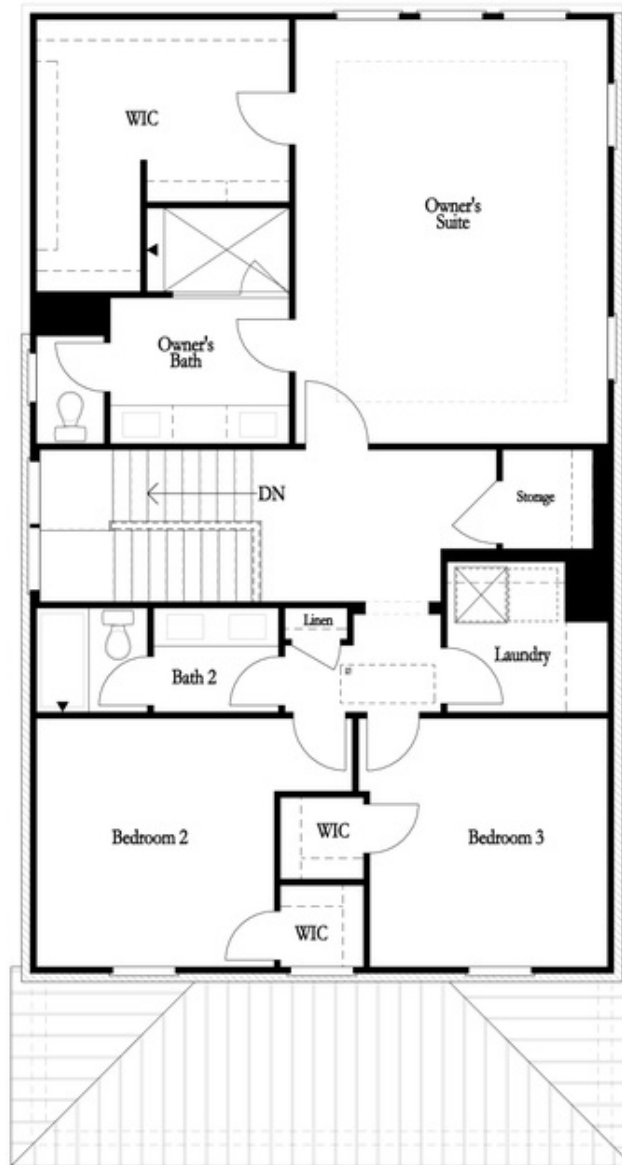
**CONTACT OUR COMMUNITY SALES MANAGER**  
**Call Us @ 470.514.6999**



First Floor

Want to Know More  
About This Home?

CONTACT OUR COMMUNITY SALES MANAGER  
Call Us @ 470.514.6999

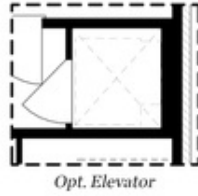


Second Floor

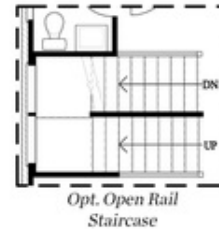
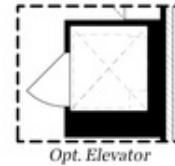
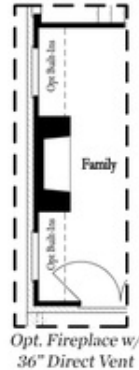
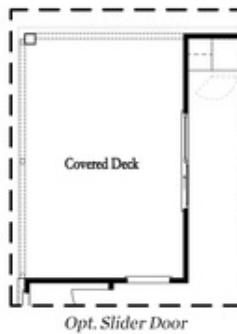
Want to Know More  
About This Home?

CONTACT OUR COMMUNITY SALES MANAGER  
Call Us @ 470.514.6999

Options



Basement Floor Options



First Floor Options

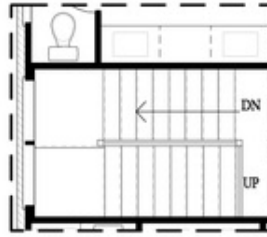
Want to Know More  
 About This Home?

CONTACT OUR COMMUNITY SALES MANAGER  
 Call Us @ 470.514.6999

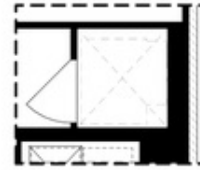
Options



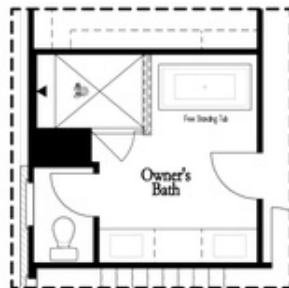
*Opt. Laundry Sink*



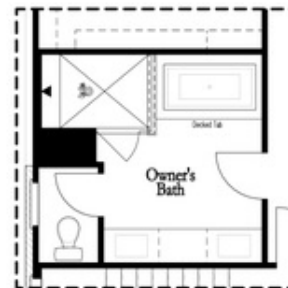
*Opt. Open Rail Staircase*



*Opt. Elevator*



*Opt. Freestanding Tub*



*Opt. Decked Tub*

Second Floor Options

Want to Know More  
 About This Home?

CONTACT OUR COMMUNITY SALES MANAGER  
 Call Us @ 470.514.6999