



PRICED AT
\$686,100

 2574 Sq Ft

 4 Beds

 3.5 Baths

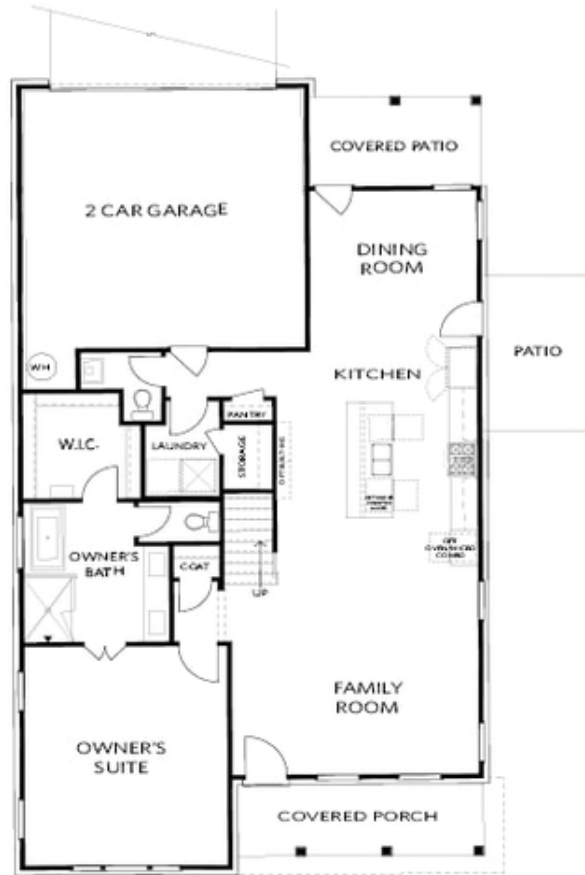
 2 Car Garage

 2.0 Story

Hillsdale C Great View in Peachtree Corners! Under Construction owners suite on main. 1 mile from The Forum w/ shops and restaurants. Brandnew Gated community surrounded by trees backing up the Chattahoochee River. 10' ceilings on the main. 3 bedrooms 2 bath upstairs with a loft. Buyers still have time to put their own touch on this home at our Design Studio. The community has state-of-the-art amenities w/Swim, fitness, parks, clubhouse, fire pit, pickleball courts etc. For driving directions you can use 4411 E. Jones Bridge Road, Peachtree Corners, GA 30092. Photos are not of the actual home but similar floor plan.

**Want to Know More
About This Home?**

CONTACT OUR COMMUNITY SALES MANAGER
Call Us @ 470.514.6999

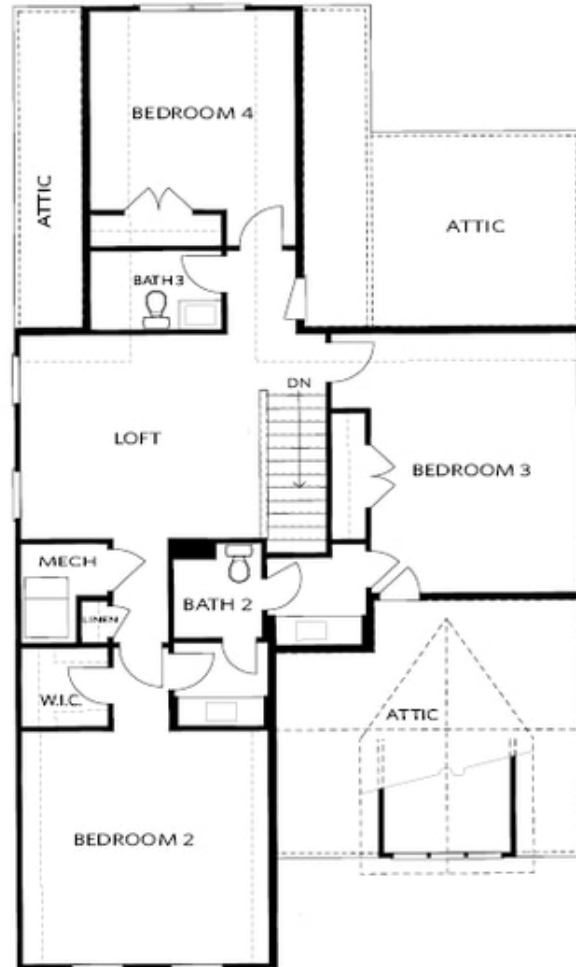


FIRST FLOOR

Elevation A

**Want to Know More
About This Home?**

CONTACT OUR COMMUNITY SALES MANAGER
Call Us @ 470.514.6999



SECOND FLOOR

Elevation A

**Want to Know More
About This Home?**

CONTACT OUR COMMUNITY SALES MANAGER
Call Us @ 470.514.6999



OPT Large Shower



OPT Screened Patio



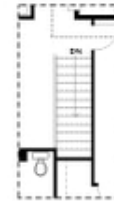
OPT 2nd Owner's Suite flo BDR 3



OPT Linear Fireplace



OPT Fireplace



OPT Open Hand Rail

FIRST FLOOR

SECOND FLOOR

Elevation A

**Want to Know More
 About This Home?**

CONTACT OUR COMMUNITY SALES MANAGER
 Call Us @ 470.514.6999