



PRICED AT
\$857,335



3103 Sq Ft



4 Beds



3.5 Baths



2 Car Garage

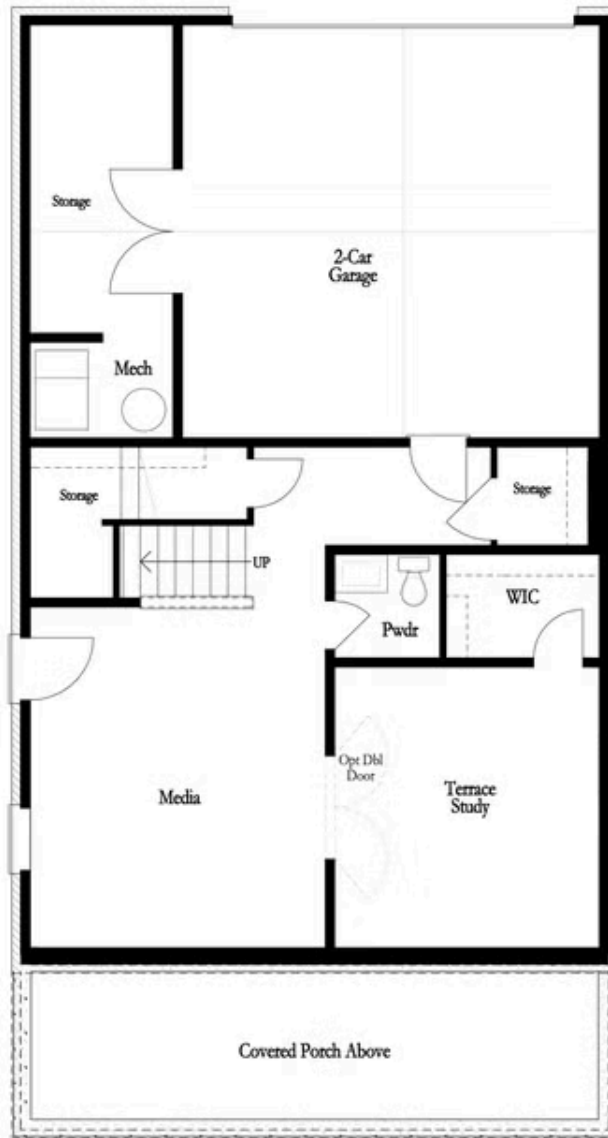


3.0 Story

Come check out the wooded view ! The Manchester A Floor Plan is Under Construction in the heart of Peachtree Corners! Newly Gated community backing up to the Chatahoochee River! 10' ceiling throughout the main level. Out your kitchen and owner's bedroom give you the best-wooded view in the entire communitiy. Buyers still have time to get creative and personalize this home at our Design Studio. The community is surrounded by beautiful lush trees and the opportunity to take a walk down to the River or enjoy state of the art amenities w/Swim, fitness, parks, clubhouse, fire pits, pickle ball courts etc. For driving directions you can use 4411 E. Jones Bridge Road, Peachtree Corners, GA 30092. Photos are not of actual home but similar plan.

**Want to Know More
About This Home?**

CONTACT OUR COMMUNITY SALES MANAGER
Call Us @ 470.514.6999



Basement Floor

Want to Know More
About This Home?

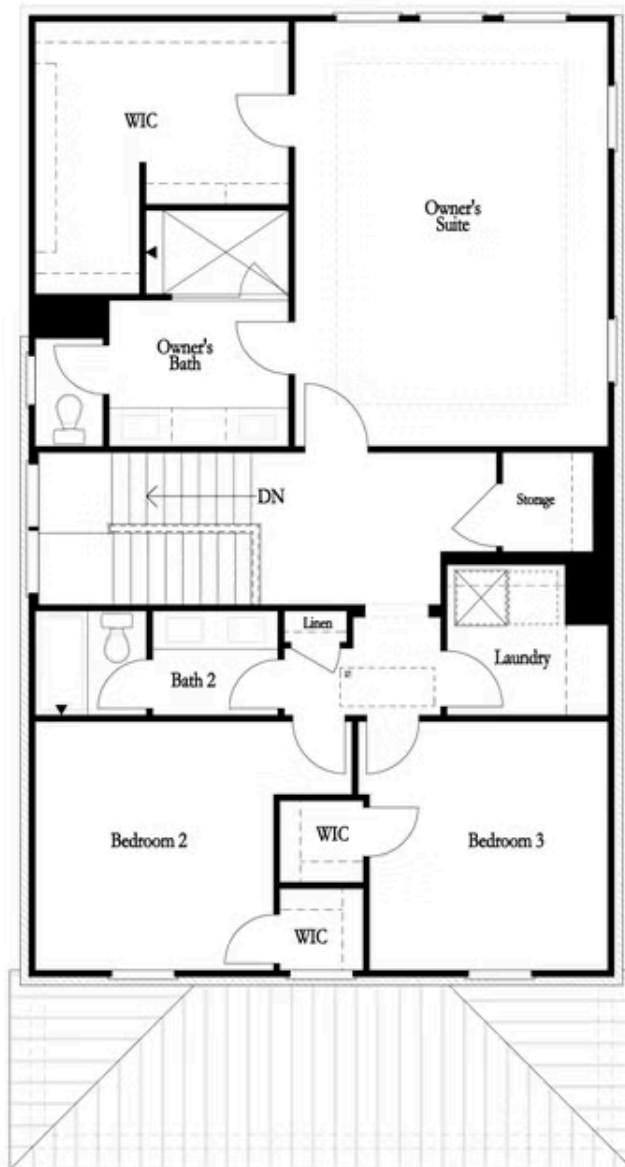
CONTACT OUR COMMUNITY SALES MANAGER
Call Us @ 470.514.6999



First Floor

Want to Know More
About This Home?

CONTACT OUR COMMUNITY SALES MANAGER
Call Us @ 470.514.6999

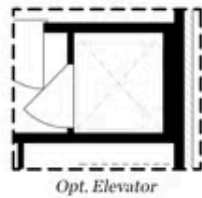


Second Floor

**Want to Know More
About This Home?**

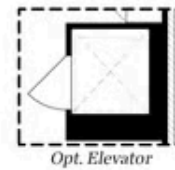
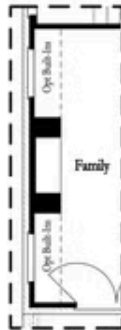
CONTACT OUR COMMUNITY SALES MANAGER
Call Us @ 470.514.6999

Options



Opt. Bedroom w/ Full Bath

Basement Floor Options



First Floor Options

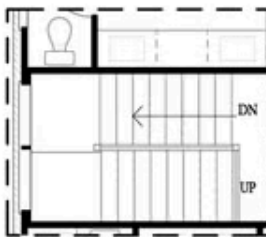
Want to Know More
About This Home?

CONTACT OUR COMMUNITY SALES MANAGER
Call Us @ 470.514.6999

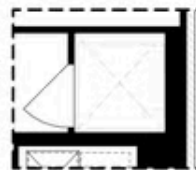
Options



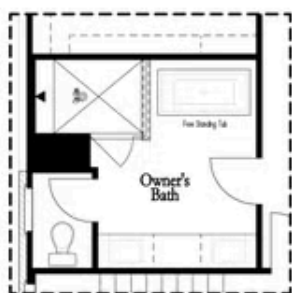
Opt. Laundry Sink



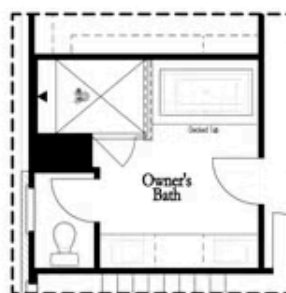
*Opt. Open Rail
Staircase*



Opt. Elevator



Opt. Freestanding Tub



Opt. Decked Tub

Second Floor Options

Want to Know More
About This Home?

CONTACT OUR COMMUNITY SALES MANAGER
Call Us @ 470.514.6999