



PRICED AT  
**\$857,335**

 3103 Sq Ft

 4 Beds

 3.5 Baths

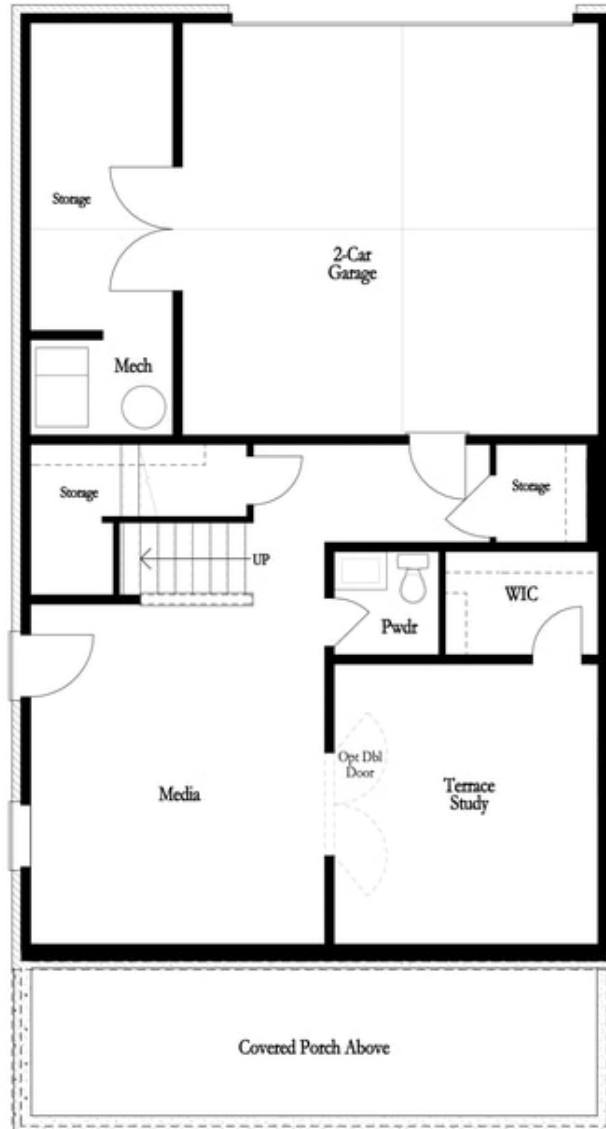
 2 Car Garage

 3.0 Story

Come check out the wooded view ! The Manchester A Floor Plan is Under Construction in the heart of Peachtree Corners! Newly Gated community backing up to the Chatahoochee River! 10' ceiling throughout the main level. Out your kitchen and owner's bedroom give you the best-wooded view in the entire communitiy. Buyers still have time to get creative and personalize this home at our Design Studio. The community is surrounded by beautiful lush trees and the opportunity to take a walk down to the River or enjoy state of the art amenities w/Swim, fitness, parks, clubhouse, fire pits, pickle ball courts etc. For driving directions you can use 4411 E. Jones Bridge Road, Peachtree Corners, GA 30092. Photos are not of actual home but similar plan.

**Want to Know More  
About This Home?**

CONTACT OUR COMMUNITY SALES MANAGER  
Call Us @ 470.514.6999



Basement Floor

**Want to Know More  
About This Home?**

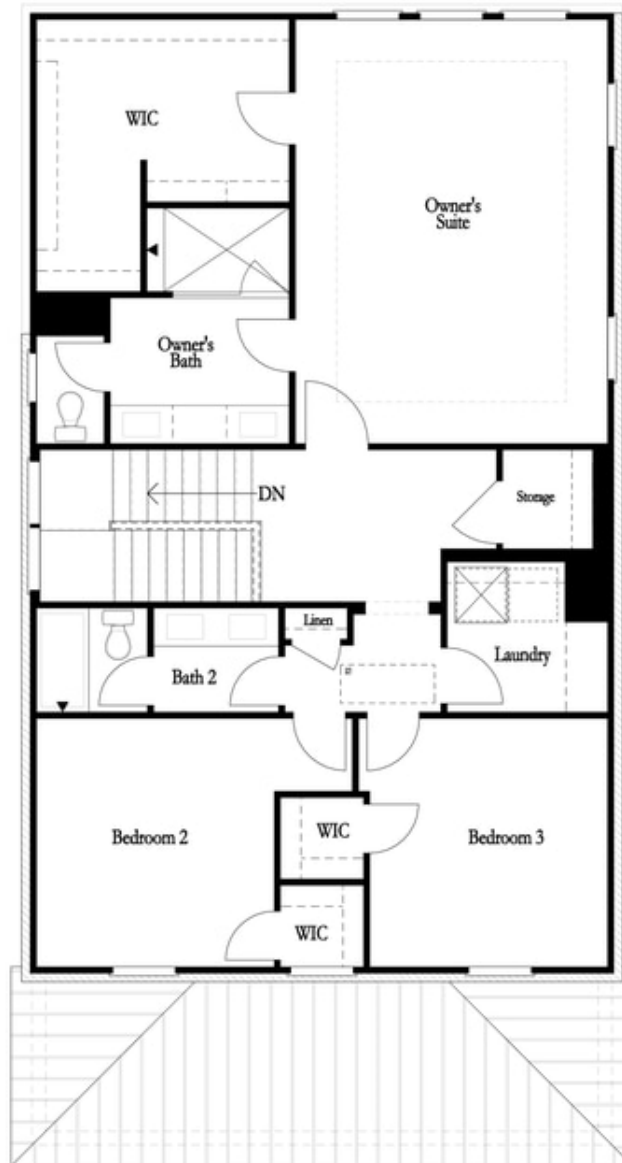
CONTACT OUR COMMUNITY SALES MANAGER  
Call Us @ 470.514.6999



First Floor

**Want to Know More  
About This Home?**

CONTACT OUR COMMUNITY SALES MANAGER  
Call Us @ 470.514.6999

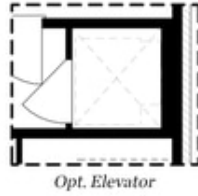


Second Floor

**Want to Know More  
About This Home?**

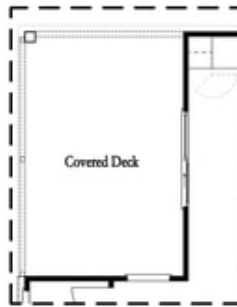
CONTACT OUR COMMUNITY SALES MANAGER  
Call Us @ 470.514.6999

Options



Opt. Bedroom w/ Full Bath

Basement Floor Options



Opt. Slider Door



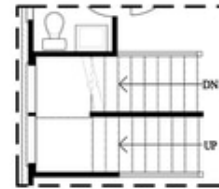
Opt. Linear  
 Fireplace



Opt. Fireplace w/  
 36" Direct Vent



Opt. Elevator



Opt. Open Rail  
 Staircase

First Floor Options

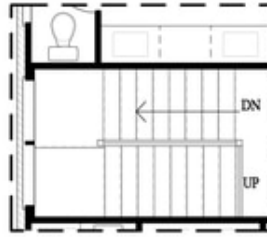
**Want to Know More  
 About This Home?**

CONTACT OUR COMMUNITY SALES MANAGER  
 Call Us @ 470.514.6999

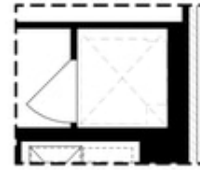
Options



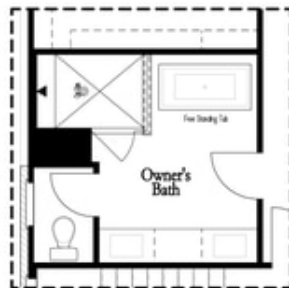
*Opt. Laundry Sink*



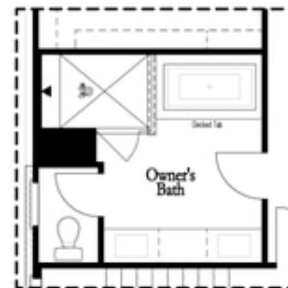
*Opt. Open Rail Staircase*



*Opt. Elevator*



*Opt. Freestanding Tub*



*Opt. Decked Tub*

Second Floor Options

**Want to Know More  
About This Home?**

CONTACT OUR COMMUNITY SALES MANAGER  
Call Us @ 470.514.6999