



PRICED AT
\$744,095

 2568 Sq Ft

 4 Beds

 3.5 Baths

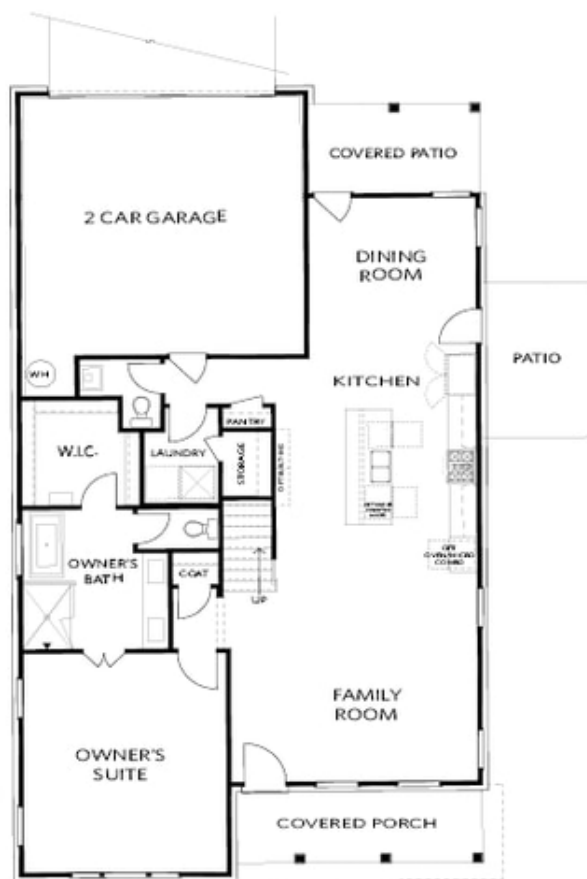
 2 Car Garage

 2.0 Story

Elevate your life in 2023! New Year New Price \$20k any way you want on all contracts written before 1/31/2023 and close 3/31/2023! Move in Ready! Welcome Home! The Hillsdale Floor Plan is almost complete. No carpet in this home, every in is hardwood. The owners bedroom is on the main floor with a ton of windows. Owners bathroom offers a large shower and a beautiful free-standing tub. 10' ceiling throughout the main level. The kitchen has Cambria quartz countertops with white kitchen cabinets stacked to the ceiling. The island is a deep midnight blue color- beautiful. Out the back of your home, you will find a covered porch and an aluminum-fenced courtyard. The community is packed with amenities- pickle ball court, pool, fire pit areas, clubhouse with fitness center, and manned gated entrance. The amenities back up to the Chattahoochee River, peaceful views and we will have trails down by the river. Come check out this wonderful home and neighborhood. For driving directions, you can use 4411 E. Jones Bridge Road, Peachtree Corners, GA 30092. Photos are not of actual home but similar plan.

**Want to Know More
About This Home?**

CONTACT OUR COMMUNITY SALES MANAGER
Call Us @ (470) 514-6999

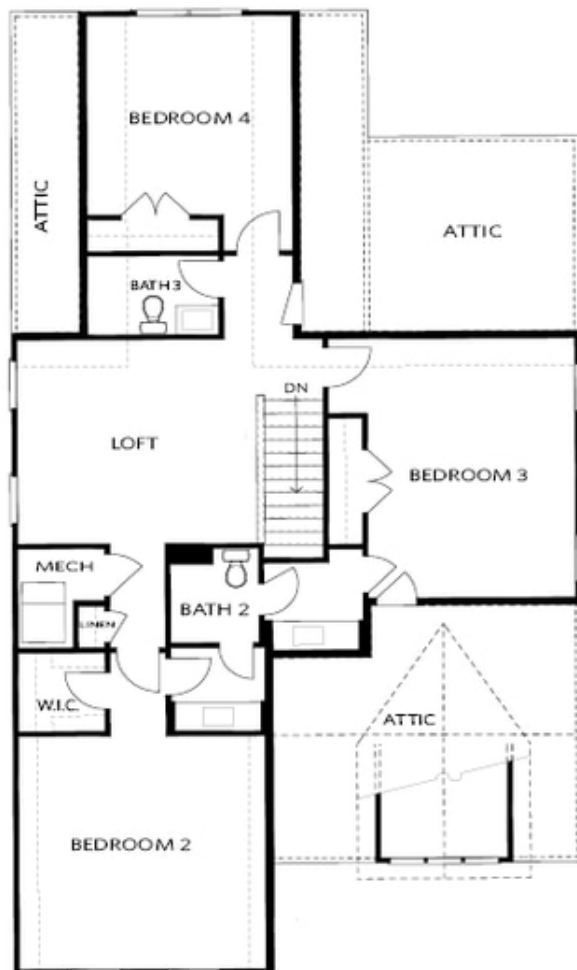


FIRST FLOOR

Elevation A

**Want to Know More
About This Home?**

CONTACT OUR COMMUNITY SALES MANAGER
Call Us @ (470) 514-6999



SECOND FLOOR

Elevation A

**Want to Know More
About This Home?**

CONTACT OUR COMMUNITY SALES MANAGER
Call Us @ (470) 514-6999



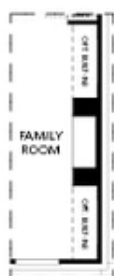
OPT Large Shower



OPT Screened Patio



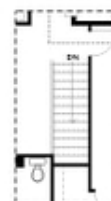
OPT 2nd Owner's Suite ilo BDR 3



OPT Linear Fireplace



OPT Fireplace



OPT Open Hand Rail

FIRST FLOOR

SECOND FLOOR

Elevation A

Want to Know More
About This Home?

CONTACT OUR COMMUNITY SALES MANAGER
Call Us @ (470) 514-6999