



PRICED AT
\$828,910

 3103 Sq Ft

 4 Beds

 3.5 Baths

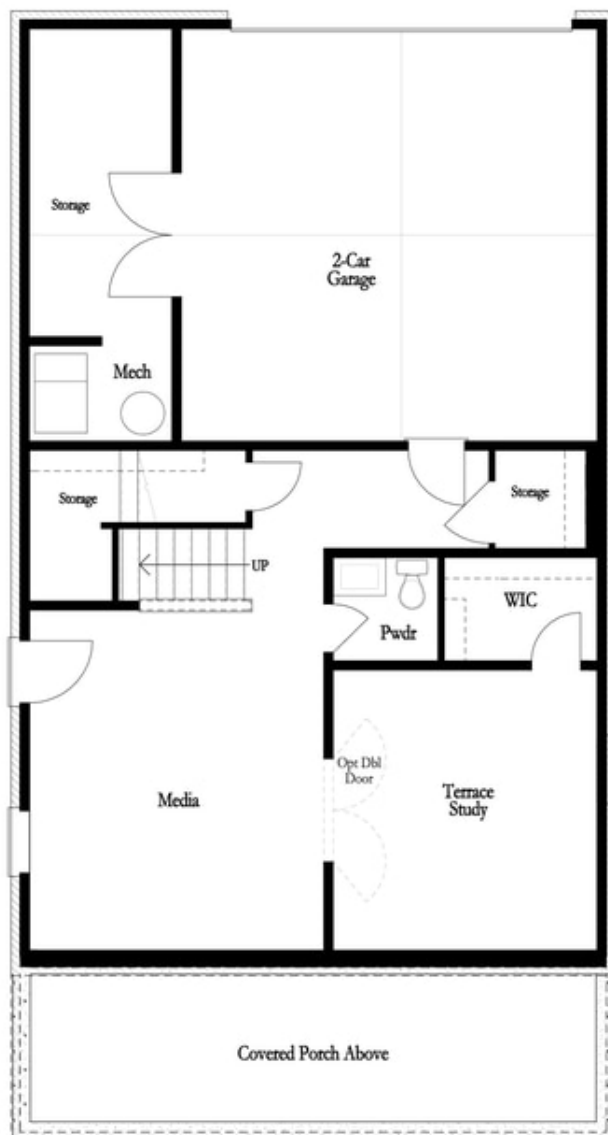
 2 Car Garage

 3.0 Story

Best location in the Community! Sit on your back deck and see the beautiful trees and if you listen closely, you can hear a waterfall. The best view is from the kitchen, back deck, and owners bedroom. These 3 areas in the home will be your favorite spot. The owners suite is huge and owner's bathroom offers a freestanding tub in the master bath with a large shower. 10' ceiling throughout the main level. Do you love a window over your kitchen sink? Of course, you do! Good thing because The Manchester has a triple window over your sink. Upstairs offer the owners bedroom and bath plus 2 additional bedrooms sharing another bath. Buyers still have time to get creative and personalize this home at our Design Studio. The community is surrounded by beautiful lush trees and the opportunity to take a walk down to the River or enjoy state of the art amenities w/Swim, fitness, parks, clubhouse, fire pits, pickel ball courts etc. For driving directions you can use 4411 E. Jones Bridge Road, Peachtree Corners, GA 30092. Photos are not of actual home but similar plan.

**Want to Know More
About This Home?**

CONTACT OUR COMMUNITY SALES MANAGER
Call Us @ (470) 514-6999



Basement Floor

**Want to Know More
About This Home?**

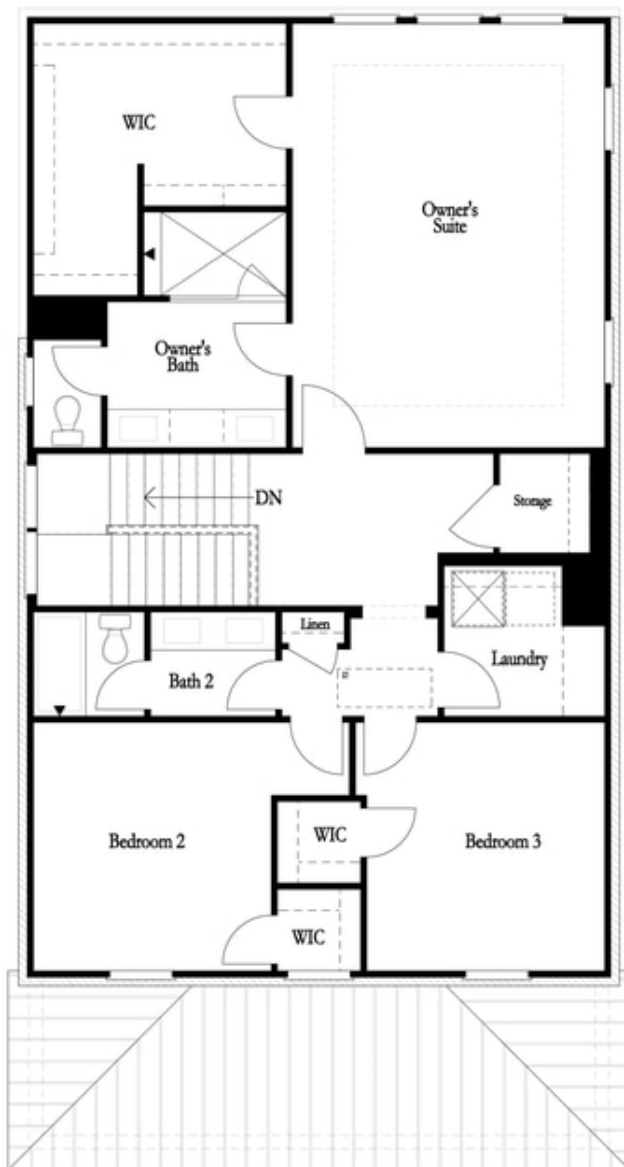
CONTACT OUR COMMUNITY SALES MANAGER
Call Us @ (470) 514-6999



First Floor

**Want to Know More
About This Home?**

CONTACT OUR COMMUNITY SALES MANAGER
Call Us @ (470) 514-6999

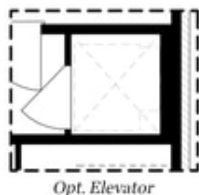


Second Floor

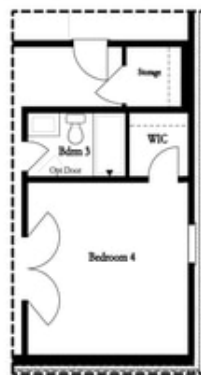
**Want to Know More
About This Home?**

CONTACT OUR COMMUNITY SALES MANAGER
Call Us @ (470) 514-6999

Options

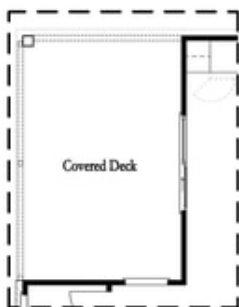


Opt. Elevator



Opt. Bedroom w/ Full Bath

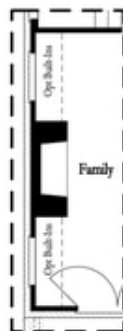
Basement Floor Options



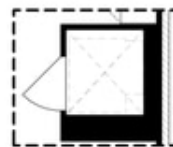
Opt. Slider Door



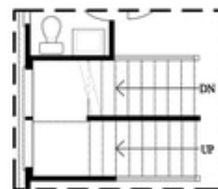
Opt. Linear
Fireplace



Opt. Fireplace w/
36" Direct Vent



Opt. Elevator



Opt. Open Rail
Staircase

First Floor Options

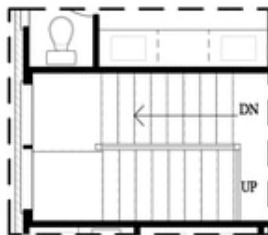
**Want to Know More
About This Home?**

CONTACT OUR COMMUNITY SALES MANAGER
Call Us @ (470) 514-6999

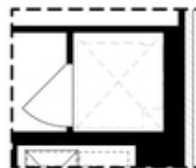
Options



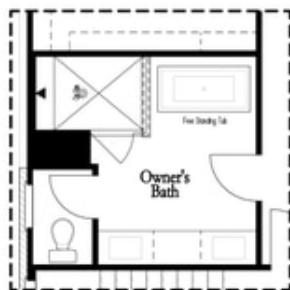
Opt. Laundry Sink



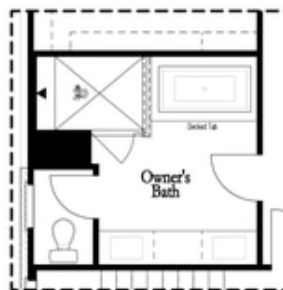
*Opt. Open Rail
Staircase*



Opt. Elevator



Opt. Freestanding Tub



Opt. Decked Tub

Second Floor Options

**Want to Know More
About This Home?**

CONTACT OUR COMMUNITY SALES MANAGER
Call Us @ (470) 514-6999