

PRICED AT  
**\$1,548,780**

 4234 Sq Ft

 4 Beds

 5.0 Baths

 2 Car Garage

 3.0 Story

Fall into Savings with \$40,000 – use it toward low rates, upgrades, appliances, closing costs & more. Ends September 30, 2025! Come see the Serene Gated Master Planned Community Waterside in Peachtree Corners! Unique opportunity to own a home on the Chattahoochee River! Introducing The Olmstead Plan, As you enter the main floor you are greeted with elegant open concept plan. You pass a private office space with glass French doors. This open concept floor plan seamlessly blends luxury and function with a designer kitchen at its heart. The space features Alabaster cabinets that provide a clean, elegant canvas, paired with stunning Calacatta Laza Oro quartz countertops, showcasing soft veining with warm gold accents. The island, stained in a rich barley finish, anchors the space with contrast and character, crowned by a striking Calacatta Laza Oro waterfall countertop that adds a touch of modern sophistication. The owner's suite on the main level offers a private retreat designed for both comfort and luxury. The spacious bedroom is filled with natural light and features direct access to a screened porch, where you can enjoy seasonal views of the river—a peaceful setting for morning coffee or unwinding at the end of the day. ...

**Want to Know More  
About This Home?**

CONTACT OUR COMMUNITY SALES MANAGER  
Call Us @ 470.514.6999



BASEMENT

Elevation A

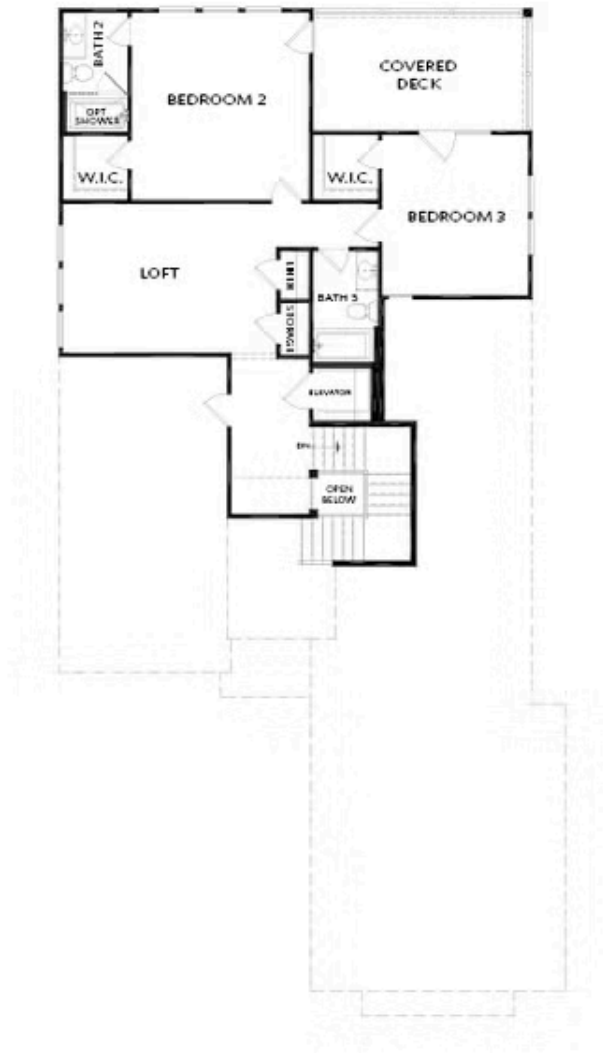
Want to Know More  
About This Home?

CONTACT OUR COMMUNITY SALES MANAGER  
Call Us @ 470.514.6999



Want to Know More  
About This Home?

CONTACT OUR COMMUNITY SALES MANAGER  
Call Us @ 470.514.6999



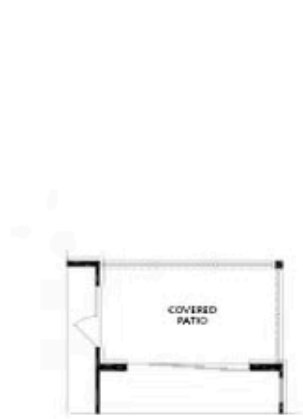
SECOND FLOOR

Elevation A

Want to Know More  
About This Home?

CONTACT OUR COMMUNITY SALES MANAGER  
Call Us @ 470.514.6999

## OPTIONS



OPT Slider Door  
at Covered Deck

FIRST FLOOR



OPT Flex Room

SECOND FLOOR

Want to Know More  
About This Home?

CONTACT OUR COMMUNITY SALES MANAGER  
Call Us @ 470.514.6999