



PRICED AT
\$621,900

 **2388 Sq Ft**

 **3 Beds**

 **3.5 Baths**

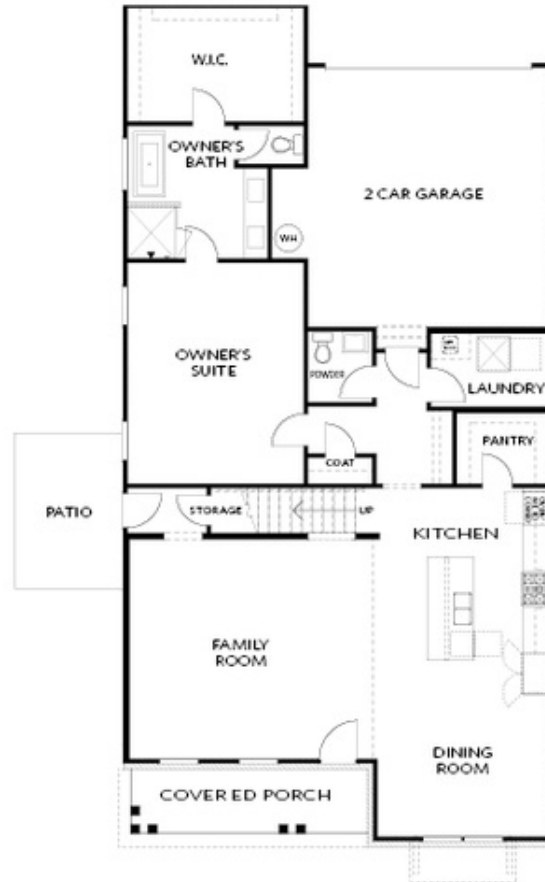
 **2 Car Garage**

 **2.0 Story**

HAMPTON PLAN, Open for entertaining, high ceilings, master on main, spacious dining area, 2 more rooms and a loft upstairs. Each home comes with a private fenced in area with paver patio. For driving directions you can use 4411 E. Jones Bridge Road, Peachtree Corners, GA 30092.

**Want to Know More
About This Home?**

CONTACT OUR COMMUNITY SALES MANAGER
Call Us @ 470.514.6999



FIRST FLOOR

Elevation B

Want to Know More
About This Home?

CONTACT OUR COMMUNITY SALES MANAGER
Call Us @ 470.514.6999



SECOND FLOOR

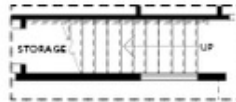
Elevation B

Want to Know More
About This Home?

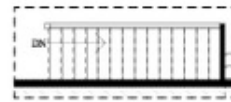
CONTACT OUR COMMUNITY SALES MANAGER
Call Us @ 470.514.6999



OPT Walk-In Shower



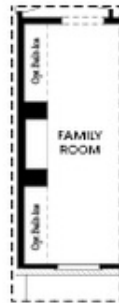
OPT Open Rail



OPT Open Rail



OPT Side Windows



OPT Lenier Fireplace



OPT Fireplace



OPT BDR 4 ilo Loft

FIRST FLOOR

SECOND FLOOR

Elevation B

Want to Know More
 About This Home?

CONTACT OUR COMMUNITY SALES MANAGER
 Call Us @ 470.514.6999