



PRICED AT
\$621,900

 2388 Sq Ft

 3 Beds

 3.5 Baths

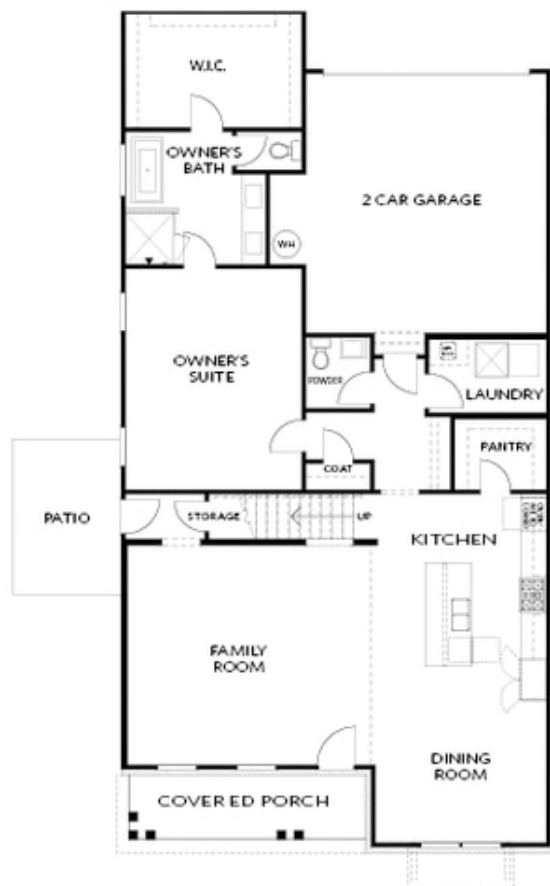
 2 Car Garage

 2.0 Story

HAMPTON PLAN, Open for entertaining, high ceilings, master on main, spacious dining area, 2 more rooms and a loft upstairs. Each home comes with a private fenced in area with paver patio. For driving directions you can use 4411 E. Jones Bridge Road, Peachtree Corners, GA 30092.

**Want to Know More
About This Home?**

CONTACT OUR COMMUNITY SALES MANAGER
Call Us @ (470) 514-6999

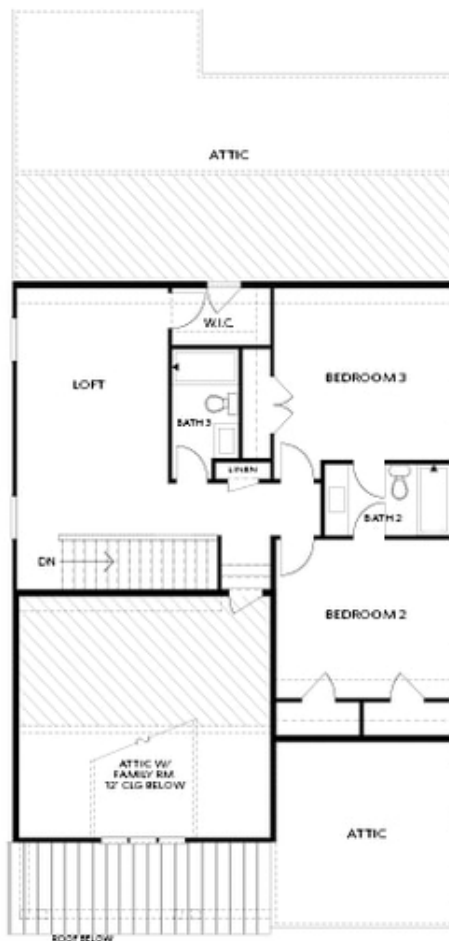


FIRST FLOOR

Elevation B

**Want to Know More
About This Home?**

CONTACT OUR COMMUNITY SALES MANAGER
Call Us @ (470) 514-6999



SECOND FLOOR

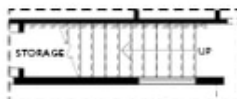
Elevation B

**Want to Know More
About This Home?**

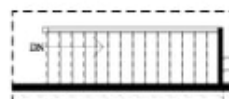
CONTACT OUR COMMUNITY SALES MANAGER
Call Us @ (470) 514-6999



OPT Walk-In Shower



OPT Open Rail



OPT Open Rail



OPT Side Windows



OPT Linear Fireplace



OPT Fireplace



OPT BDR 4 ilo Loft

FIRST FLOOR

SECOND FLOOR

Elevation B

**Want to Know More
About This Home?**

CONTACT OUR COMMUNITY SALES MANAGER
Call Us @ (470) 514-6999