



PRICED AT
\$744,900

 3011 Sq Ft

 4 Beds

 3.5 Baths

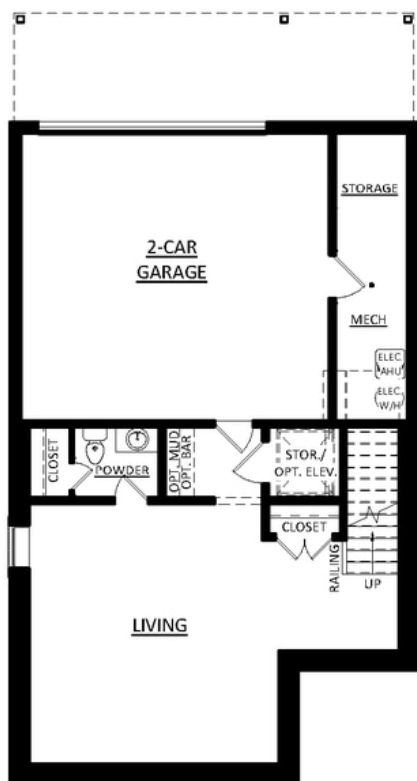
 2 Car Garage

 3.0 Story

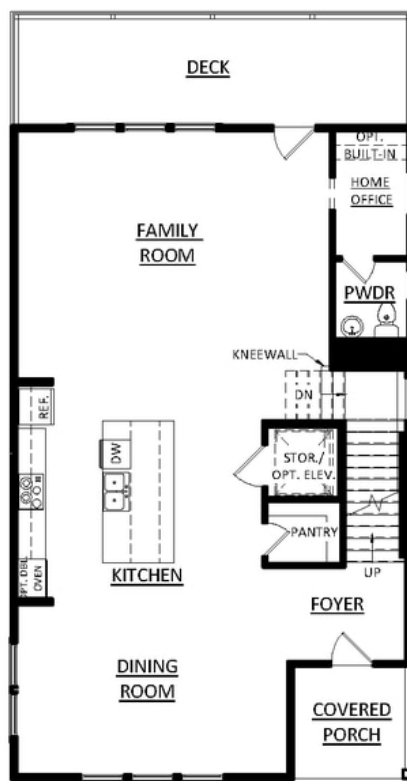
Maren E Under Construction 1 mile from the Forum in Peachtree Corners! Gated community backing up to the Chatahoochee River! The terrace level has a bedroom and full bath, main floor is wide open with 10' ceilings. The Kitchen is in the middle of the main floor giving some separation to the family and dining room all while keeping the feel of the space very open. On second-floor you will find the owner's suite with w/an oversized shower plus 2 additional bedrooms with a shared bath. Still, time to get creative and personalize this home at our Design Studio. The community is gated for privacy, surrounded by beautiful lush trees and opportunity to take a walk down to the River or enjoy state of the art amenities w/Swim, fitness, parks, clubhouse, etc. Community w/single family & townhomes Visiting our office is by appointment only. For driving directions you can use 4411 E. Jones Bridge Road, Peachtree Corners, GA 30092

**Want to Know More
About This Home?**

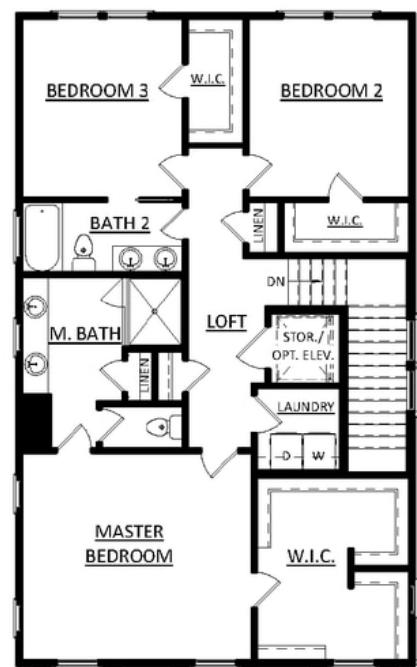
CONTACT OUR COMMUNITY SALES MANAGER
Call Us @ (470) 514-6999



Terrace Floor



First Floor



Second Floor

**Want to Know More
About This Home?**

CONTACT OUR COMMUNITY SALES MANAGER
Call Us @ (470) 514-6999



OPT. TERRACE BEDROOM



OPT. OWNER'S BATH W/ TUB



OPT. OWNER'S BATH W/
WALK-IN SHOWER

**Want to Know More
About This Home?**

CONTACT OUR COMMUNITY SALES MANAGER
Call Us @ (470) 514-6999



OPT. 2 TRANSOM WINDOWS



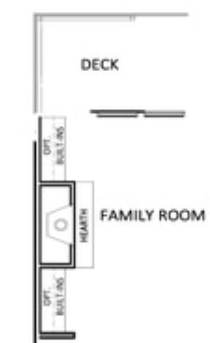
OPT. 3 TRANSOM WINDOWS



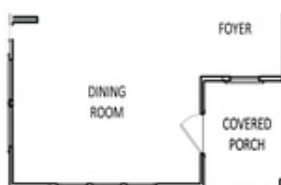
OPT. 2 FULL WINDOWS



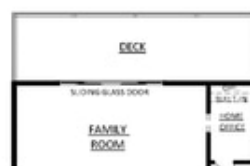
OPT. 3 FULL WINDOWS



OPT. FIREPLACE WITH
OPT. BUILT-INS



OPT. DINING ENTRY



OPT. SLIDING GLASS DOOR

Want to Know More
About This Home?

CONTACT OUR COMMUNITY SALES MANAGER
Call Us @ (470) 514-6999