



PRICED AT
\$633,225

 **2574 Sq Ft**

 **4 Beds**

 **3.5 Baths**

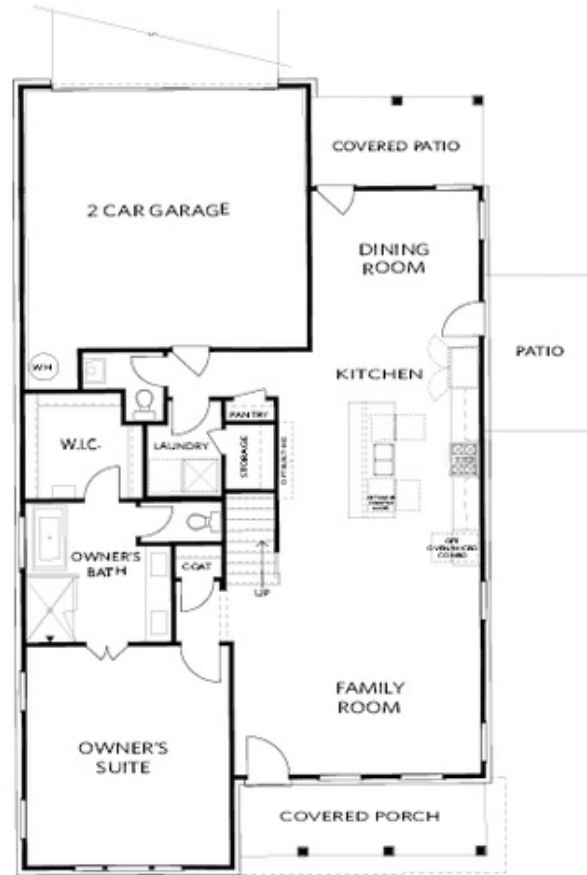
 **2 Car Garage**

 **2.0 Story**

HILLSDALE A PLAN, Master on Main, open plan, 3 huge bedrooms upstairs with an additional loft. End of street so additional windows and space, each home comes with a fenced area off of paver patio. For driving directions you can use 4411 E. Jones Bridge Road, Peachtree Corners, GA 30092.

**Want to Know More
About This Home?**

CONTACT OUR COMMUNITY SALES MANAGER
Call Us @ 470.514.6999



FIRST FLOOR

Elevation A

Want to Know More
About This Home?

CONTACT OUR COMMUNITY SALES MANAGER
Call Us @ 470.514.6999