



PRICED AT
\$633,225

 2574 Sq Ft

 4 Beds

 3.5 Baths

 2 Car Garage

 2.0 Story

HILLSDALE A PLAN, Master on Main, open plan, 3 huge bedrooms upstairs with an additional loft. End of street so additional windows and space, each home comes with a fenced area off of paver patio. For driving directions you can use 4411 E. Jones Bridge Road, Peachtree Corners, GA 30092.

**Want to Know More
About This Home?**

CONTACT OUR COMMUNITY SALES MANAGER
Call Us @ (470) 514-6999

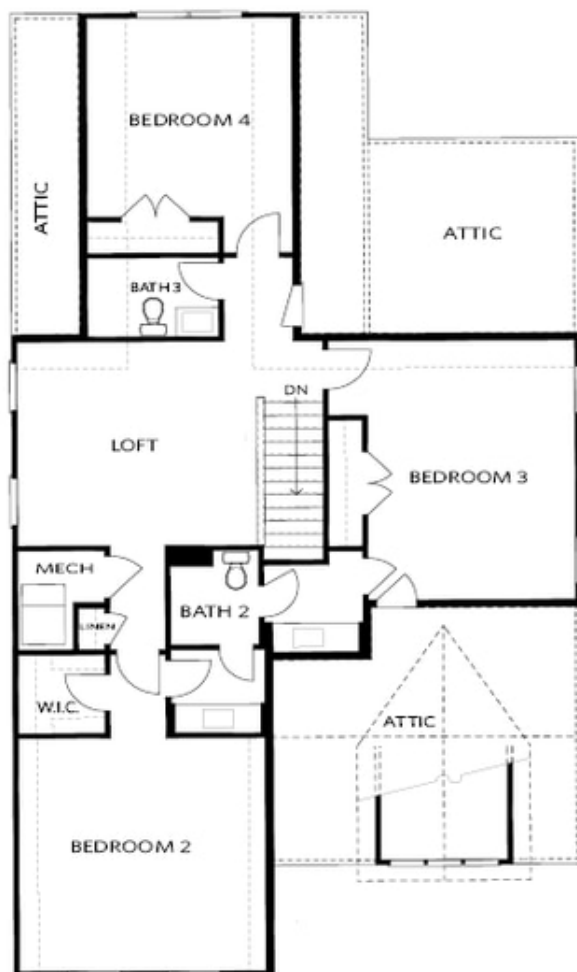


FIRST FLOOR

Elevation A

**Want to Know More
About This Home?**

CONTACT OUR COMMUNITY SALES MANAGER
Call Us @ (470) 514-6999



SECOND FLOOR

Elevation A

**Want to Know More
About This Home?**

CONTACT OUR COMMUNITY SALES MANAGER
Call Us @ (470) 514-6999



OPT Large Shower



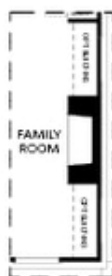
OPT Screened Patio



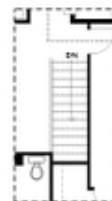
OPT 2nd Owner's Suite ilo BDR 3



OPT Linear Fireplace



OPT Fireplace



OPT Open Hand Rail

FIRST FLOOR

SECOND FLOOR

Elevation A

**Want to Know More
About This Home?**

CONTACT OUR COMMUNITY SALES MANAGER
Call Us @ (470) 514-6999