




PRICED AT  
**\$894,900**

 3261 Sq Ft

 4 Beds

 3.5 Baths

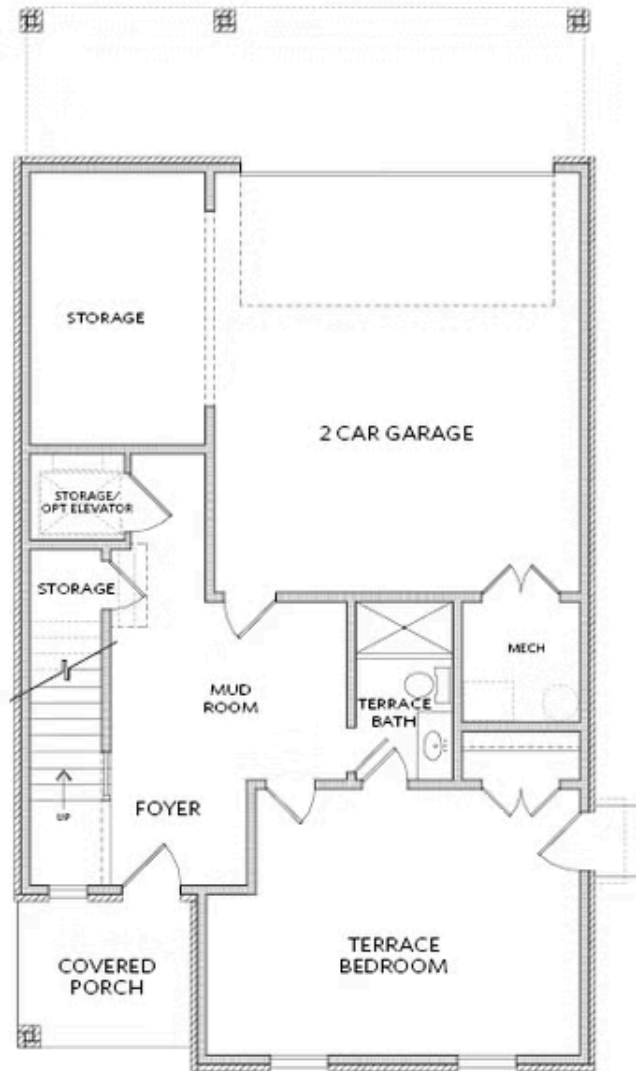
 2 Car Garage

 3.0 Story

New Single Family Detached floor plan - THE STAFFORD. Rear entry two car garage with long driveway for guest parking. GOLF CART storage in the garage in addition to two parking spaces. Three stories on a slab; with option elevator. Terrace level composed of foyer, garage, full bedroom and bathroom. Heading to the main floor, amazing open space will make this floor plan POP! Large kitchen and Island, Customize your whole home at our Design Studio for a limited time! Pick your flooring, cabinets, countertops, and much more! On main level, covered porch off kitchen in rear of the home. Open concept main level with dining and living room opening to a covered porch encompassing the entire width of the front of the house! WOW! French doors out to this space create a private but welcoming outdoor area. Side yards between homes; fenced in and perfect for pets/more outdoor living. Top floor houses Owners Suite, laundry room and two additional great sized bedrooms. These plans are a MUST SEE and won't last long! Waterside features Resort-Style Amenities with a Full Gym, Pickle Ball Courts, Oversized Pool, Sun Deck, River Terrace Overlooks, 2 Miles of Private walking trails by the River, ...

**Want to Know More  
About This Home?**

CONTACT OUR COMMUNITY SALES MANAGER  
Call Us @ 470.514.6999



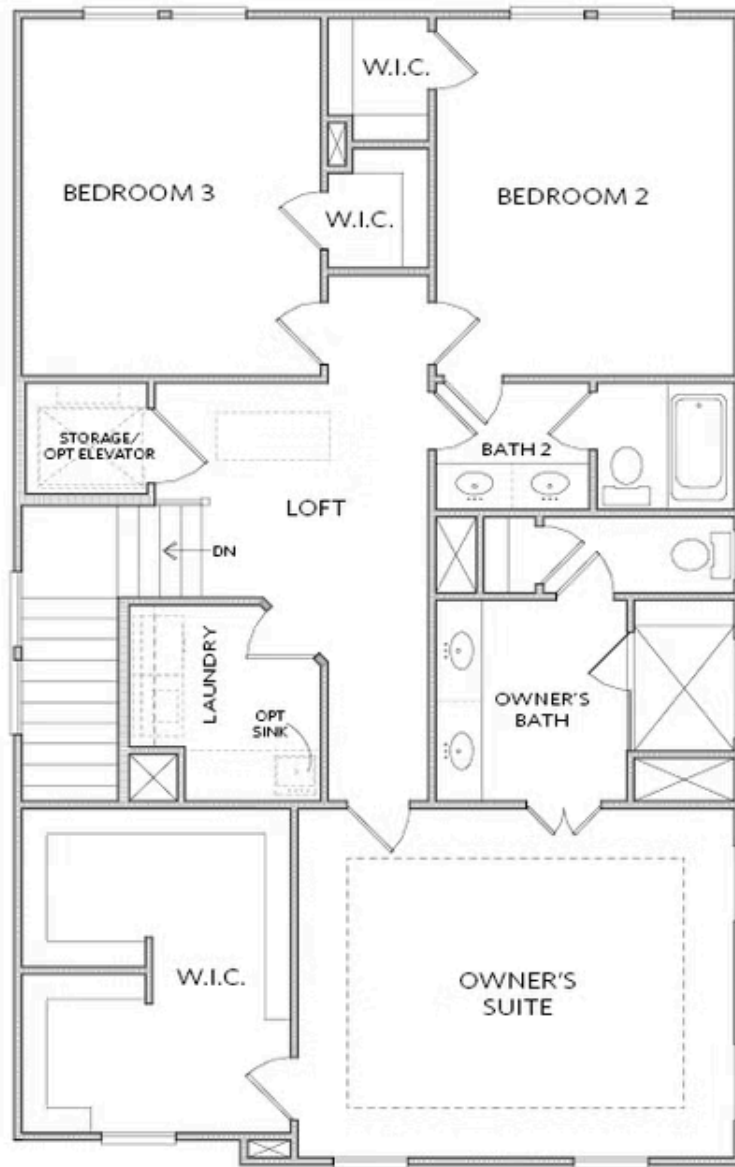
**Want to Know More  
About This Home?**

CONTACT OUR COMMUNITY SALES MANAGER  
Call Us @ 470.514.6999



Want to Know More  
About This Home?

CONTACT OUR COMMUNITY SALES MANAGER  
Call Us @ 470.514.6999



**Want to Know More  
About This Home?**

CONTACT OUR COMMUNITY SALES MANAGER  
Call Us @ 470.514.6999



OPT Fireplace



OPT Free Standing Tub  
and Sperate Shower



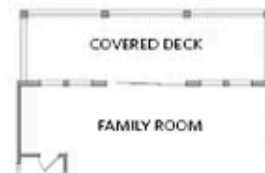
OPT Owner's Suite 2 ilo  
Bedroom 2, Bedroom 3 & Bath 2



OPT Golf Cart Storage ilo Storage



OPT Covered Deck



OPT Covered Deck and  
Sliding Glass Door

Want to Know More  
About This Home?

CONTACT OUR COMMUNITY SALES MANAGER  
Call Us @ 470.514.6999