



PRICED FROM
\$878,500

 2,230 - 2,235 Sq Ft

 4 Beds

 3.5 Baths

 2 Car Garage

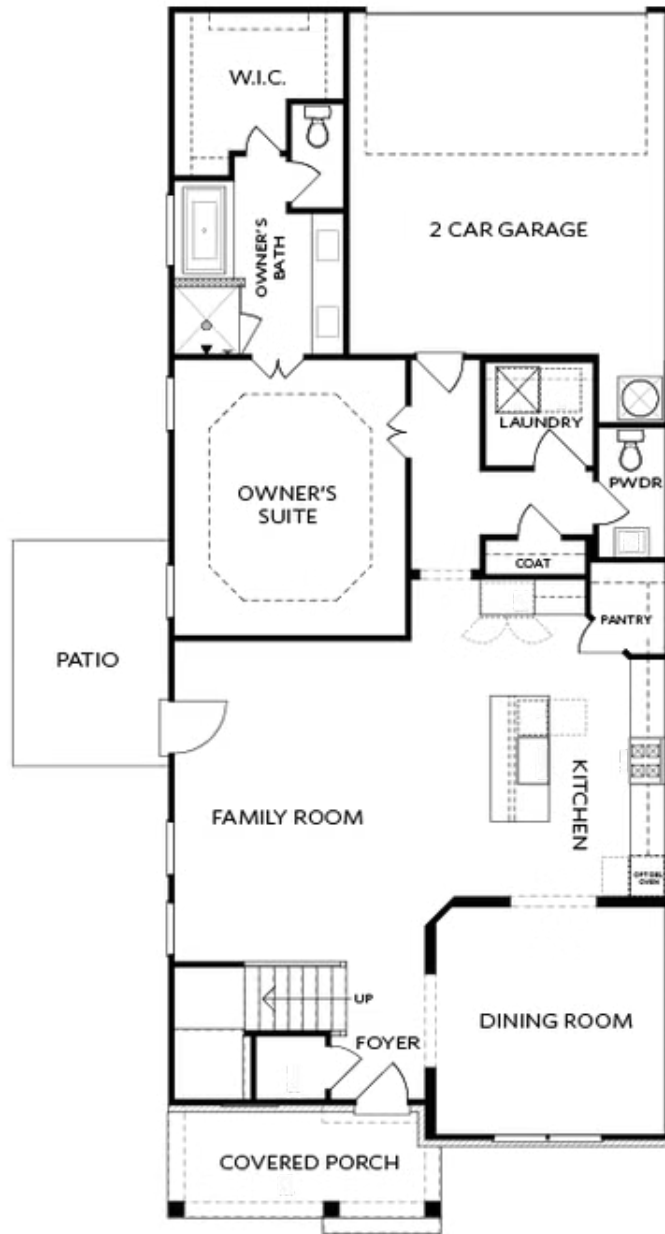
 2.0 Story

- Separate Formal Dining Room
- Open Main Level Layout Spacious Family Room with Access to Outdoor Living
- Gourmet Kitchen with Island and Walk In Pantry
- Three Additional Bedrooms on the Upper Level with Full or Shared Bath
- Two Car Rear Entry Garage

[Read More Online](#)

Available Elevations

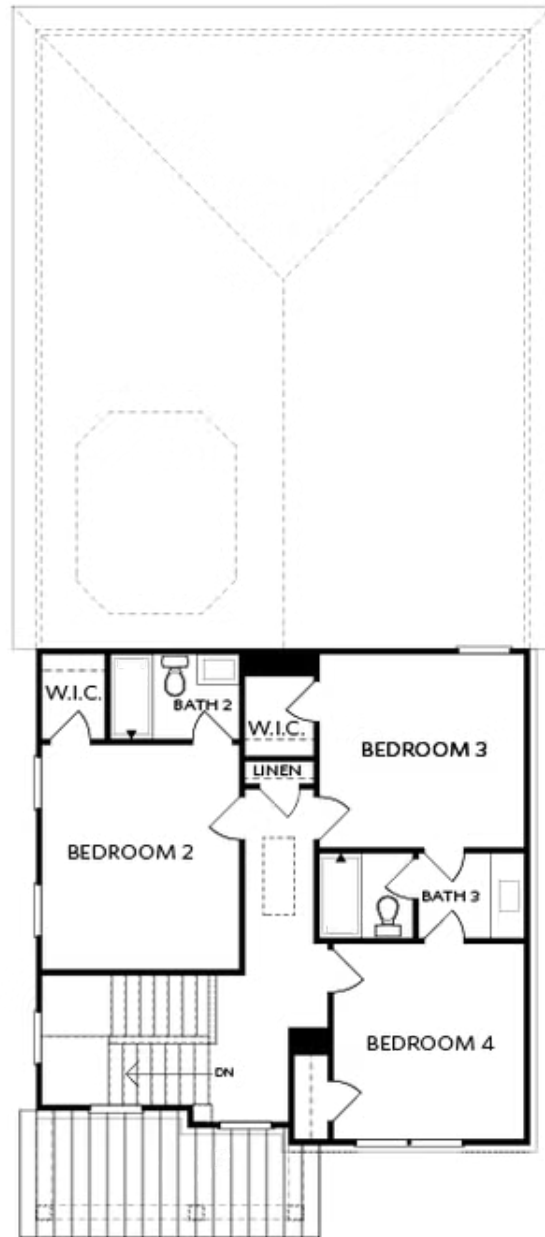




Elevation C

Want to Know More
About This Home?

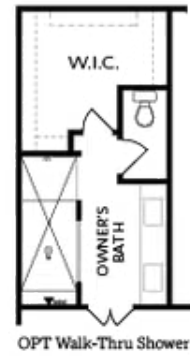
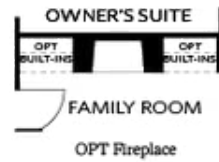
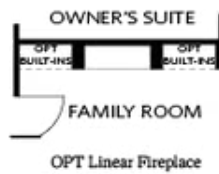
CONTACT OUR COMMUNITY SALES MANAGER
Call Us @ 470.514.6999



Elevation C

Want to Know More
About This Home?

CONTACT OUR COMMUNITY SALES MANAGER
Call Us @ 470.514.6999



Want to Know More
About This Home?

CONTACT OUR COMMUNITY SALES MANAGER
Call Us @ 470.514.6999