




PRICED FROM
\$876,900

 2,479 - 2,859 Sq Ft

 4 - 5 Beds

 3 - 4 Baths

 2 Car Garage

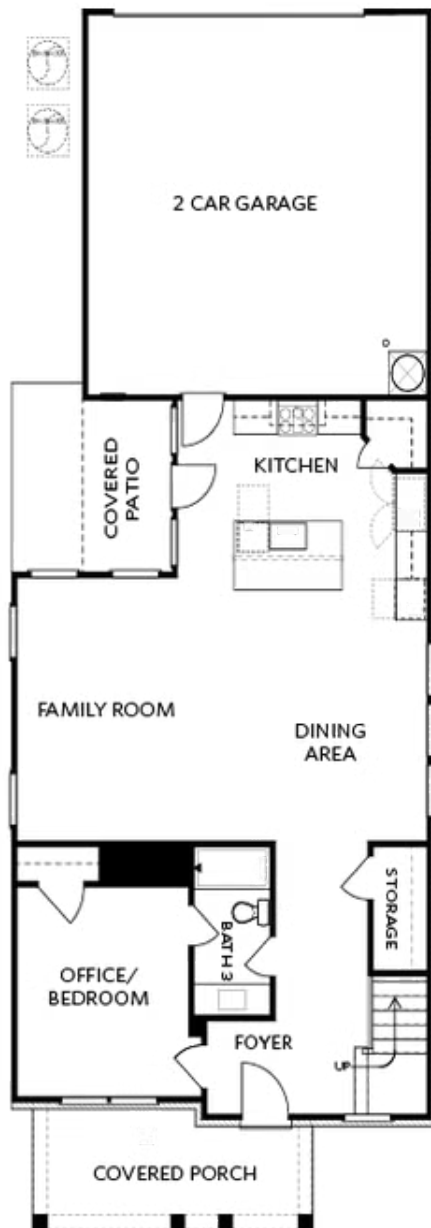
 2.0 - 3.0 Story

- Spacious Kitchen with Island with Access to Private Covered Porch
- Open Main Level Layout Ideal for Entertaining
- Private Owner's Retreat with Covered Patio, Large Bath with Dual Vanities and Huge Walk In Closet
- Guest Bedroom or Home Office on Main Level
- Two Secondary Bedrooms and Office/Loft Area on Upper Level
- Optional Third Level Retreat with Additional Bedroom, Full Bath and Walk In Closet
- Two Car Rear Entry Garage

[Read More Online](#)

Available Elevations

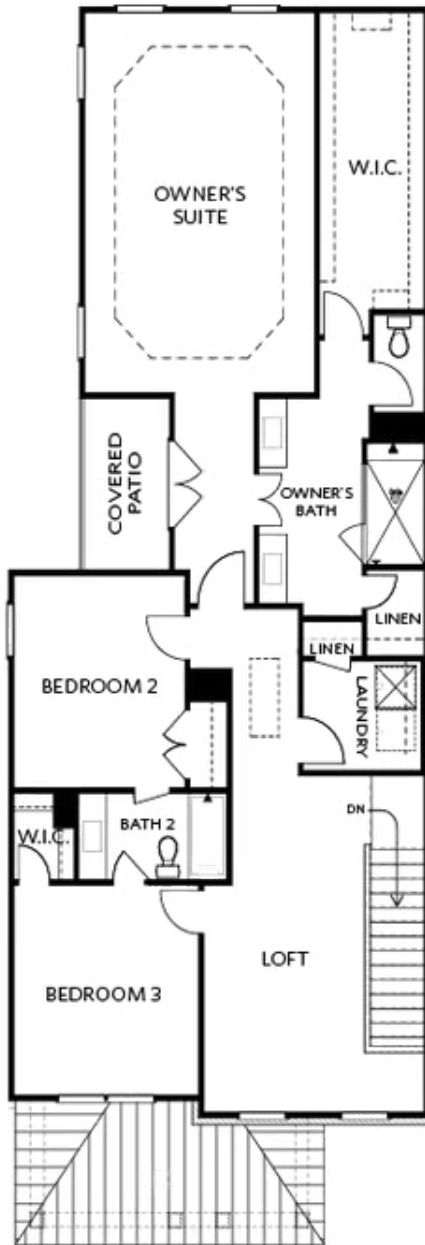




Elevation B

Want to Know More
About This Home?

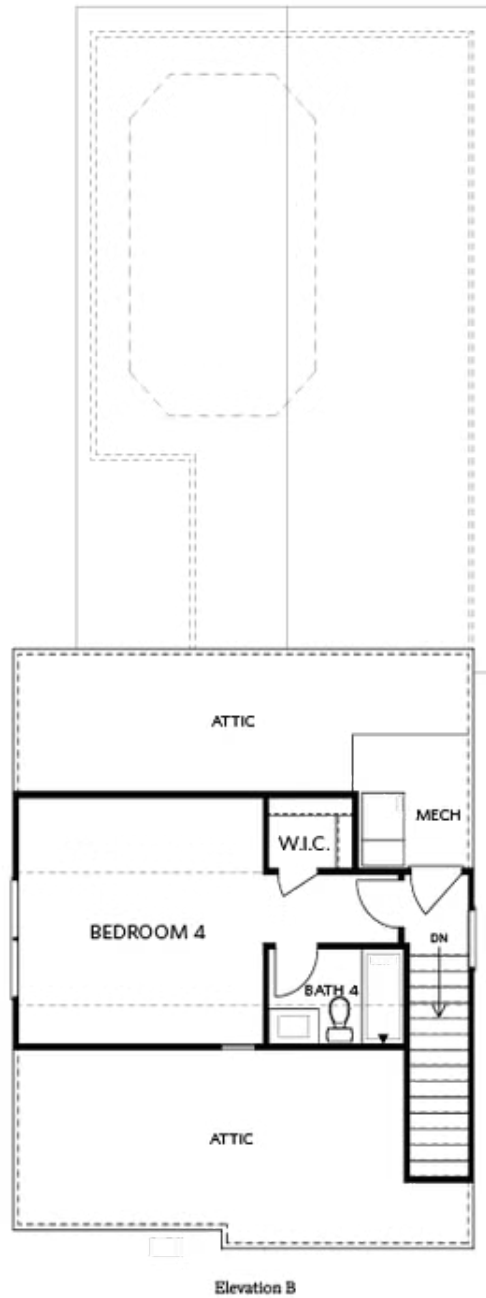
CONTACT OUR COMMUNITY SALES MANAGER
Call Us @ 470.514.6999



Elevation B

Want to Know More
About This Home?

CONTACT OUR COMMUNITY SALES MANAGER
Call Us @ 470.514.6999



Want to Know More
About This Home?

CONTACT OUR COMMUNITY SALES MANAGER
Call Us @ 470.514.6999



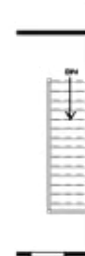
OPT Left Side Window



OPT Shower @Bath 3



OPT Left Side Window



OPT Open Rail



OPT Fireplace



OPT Closet



OPT Walk-Thru Shower



OPT Tub & Shower



OPT Linear Fireplace

FIRST FLOOR

SECOND FLOOR

Want to Know More
About This Home?

CONTACT OUR COMMUNITY SALES MANAGER
Call Us @ 470.514.6999