



PRICED FROM
\$1,307,900

 4,234 Sq Ft

 3 - 4 Beds

 3.5 - 4 Baths

 2 Car Garage

 2.0 - 3.0 Story

- Owner's on Main w. Access to Covered Patio/Deck
- Owner's Suite w. Massive W.I.C in Owner's Bath
- Optional Elevator
- Open Main Level - View from the Kitchen to the Dining Room to the Family Room
- Optional Basement w. Optional Wet Bar & Optional Island
- Study off the Foyer
- Laundry Room on Main

[Read More Online](#)

Available Elevations



Elevation A



Elevation B



Elevation C



BASEMENT

Elevation A

**Want to Know More
About This Home?**

CONTACT OUR COMMUNITY SALES MANAGER
Call Us @ 470.514.6999

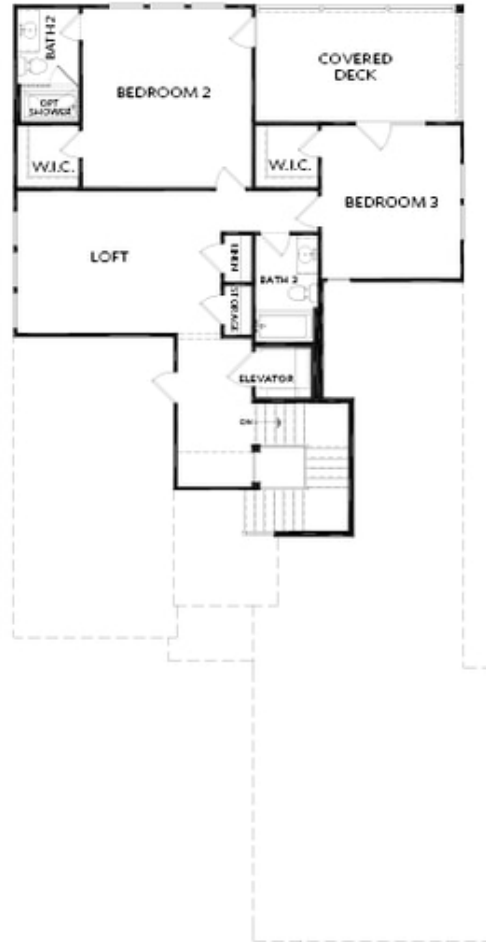


FIRST FLOOR

Elevation A

**Want to Know More
About This Home?**

CONTACT OUR COMMUNITY SALES MANAGER
Call Us @ 470.514.6999



SECOND FLOOR

Elevation A

**Want to Know More
About This Home?**

CONTACT OUR COMMUNITY SALES MANAGER
Call Us @ 470.514.6999