



PRICED AT
\$698,895

 2201 Sq Ft

 3 Beds

 2.5 Baths

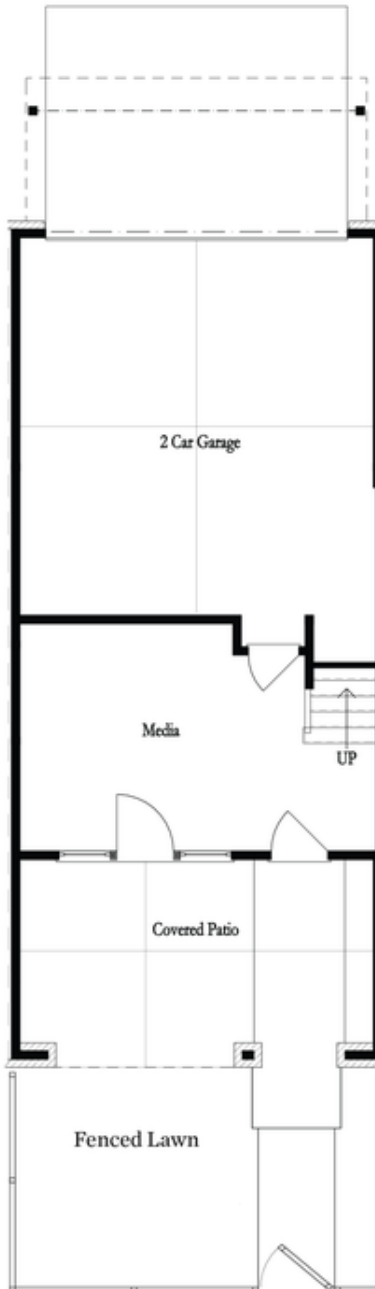
 2 Car Garage

 3.0 Story

Home for the Holidays with The Providence Group! \$20K YOUR WAY for contracts closing in December! These Beautiful Benton 1 plans are an entertainer's dream! FENCED IN YARD & OUTDOOR FIREPLACE! All yardwork in yard is taken care of by the HOA. Each unit crafted uniquely on the outside with brick color, gables and roof pitches for cohesive but unique look! Middle units, Brick on entire front of structure, mixture of brick and Hardee Plan on rear of the building. Inside the front door of the home, you will find multi-use flex room that could fit many needs (gym, office, extra living space). beautiful Polaris Plus Wild Dunes light neutral solid surface flooring throughout home - no carpet! On main level you will find the kitchen, living and dining areas - all complete with upgraded finishes throughout. Kitchen includes Blanco Stainless 30x16 single kitchen sink, Satin Nickel hardware, MSO Calacatta Quarts and a lovely herringbone patten of 3x12 white gloss tile. Perimeter cabinets are white with an accented willow gray on the island. GE Profile appliances - all are included except Washer/Dryer/Fridge. 5-burner gas cooking with chimney hood. Open concept kitchen overlooks dining and living areas. Tons of room for ...

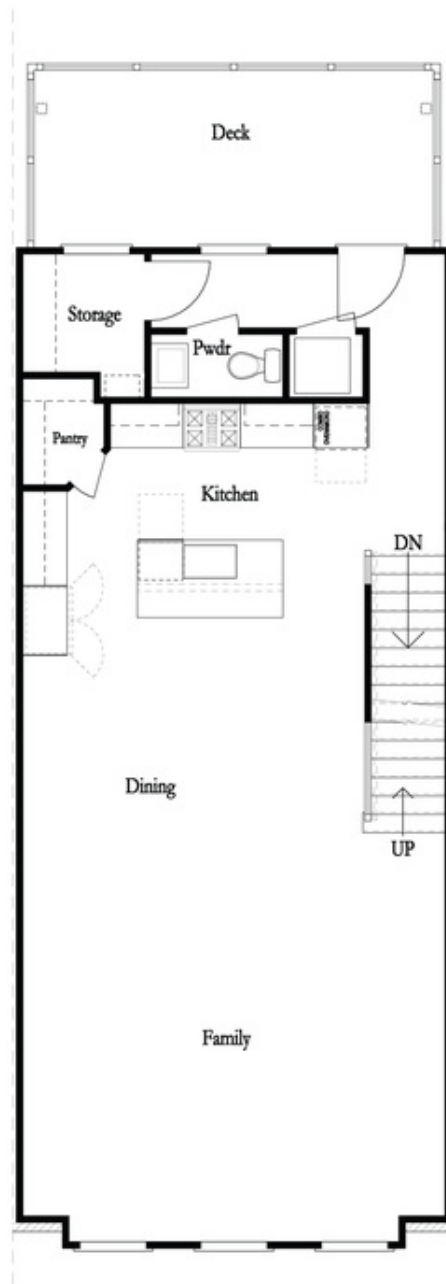
Want to Know More
About This Home?

CONTACT OUR COMMUNITY SALES MANAGER
Call Us @ 470.514.6999



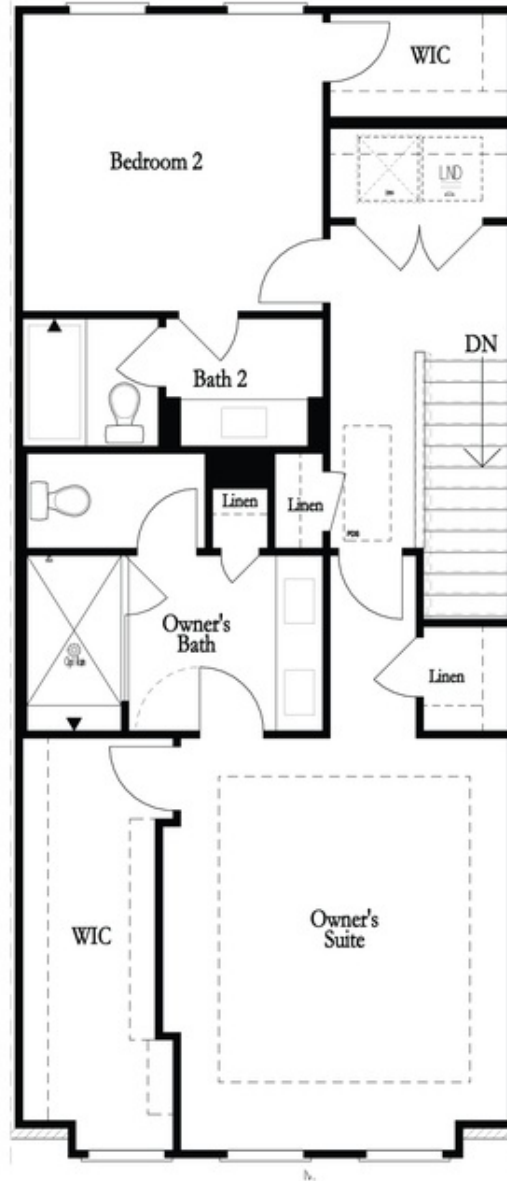
Want to Know More
About This Home?

CONTACT OUR COMMUNITY SALES MANAGER
Call Us @ 470.514.6999



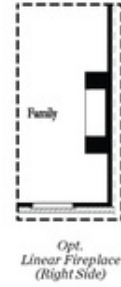
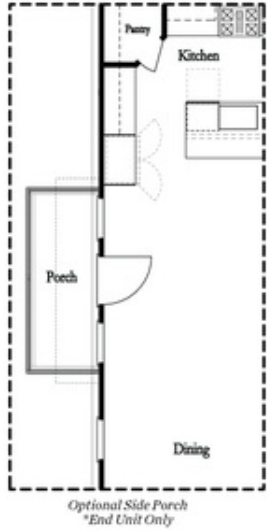
Want to Know More
About This Home?

CONTACT OUR COMMUNITY SALES MANAGER
Call Us @ 470.514.6999

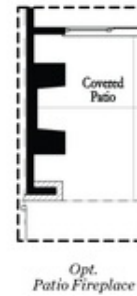
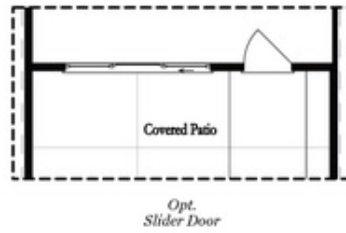
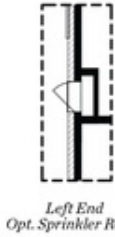


Want to Know More
About This Home?

CONTACT OUR COMMUNITY SALES MANAGER
Call Us @ 470.514.6999



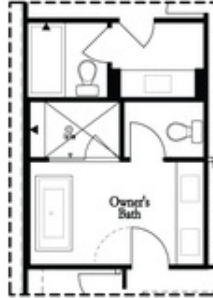
Main Level Options



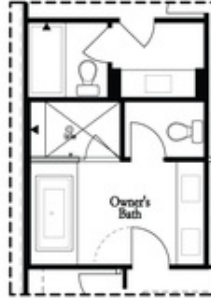
Terrace Level Options

Want to Know More
About This Home?

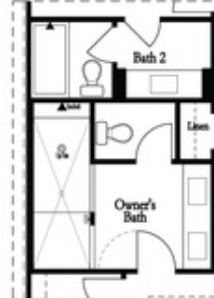
CONTACT OUR COMMUNITY SALES MANAGER
Call Us @ 470.514.6999



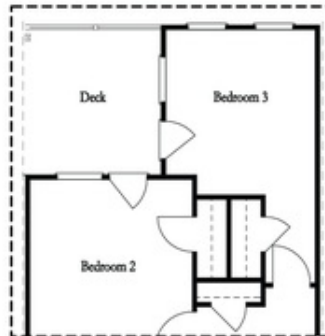
*Opt. Freestanding
Tub/Shower Combo*



*Opt. Decked
Tub/Shower Combo*



Opt. Walk-Through Shower



*Opt. Bedroom 3
*Only Available with Sunroom option
Laundry Moved to Main Level w/ this Opt.

Upper Level Options

Want to Know More
About This Home?

CONTACT OUR COMMUNITY SALES MANAGER
Call Us @ 470.514.6999