



PRICED AT
\$735,985

 **2201 Sq Ft**

 **3 Beds**

 **2.5 Baths**

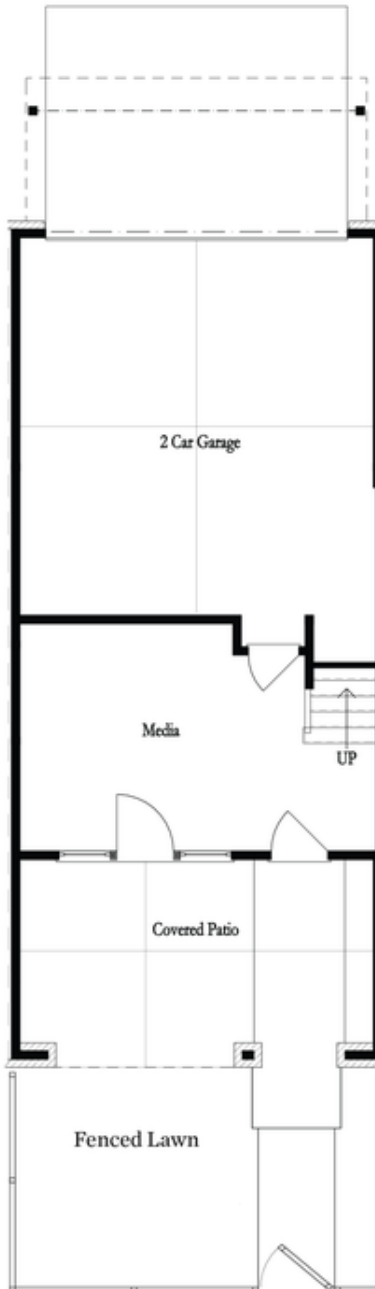
 **2 Car Garage**

 **3.0 Story**

Home for the Holidays with The Providence Group! \$20K YOUR WAY for contracts closing in December! Looking for a townhome with a FENCED IN YARD & OUTDOOR FIREPLACE? Introducing this Benton 1 END UNIT! All yardwork in yard is taken care of by the HOA. Inside the front door of the home, you will find multi-use flex room that could fit many needs (gym, office, extra living space). Upstairs on main level you will find the kitchen, living and dining areas - all complete with upgraded finishes throughout. White cabinets with upgraded GE Cafe Appliances. Ceramic farmhouse sink sits underneath glass pendant lights to create the perfect contrast of bright and elegant! Natural shades throughout, beautiful Shaw flooring with warm undertones. Design upgraded continue throughout with Matte Black hardware, 36" Fireplace with white painted brick surround and Rheem tankless water heater. Large windows adorn the living room for tons of natural light! Tucked away behind the kitchen is a sunroom that could double as a home office space with access to the deck. White upper cabinets included in laundry for storage! The top floor hosts your spacious owner's suite with large walk-in closet. No carpet in any of the bedrooms! ...

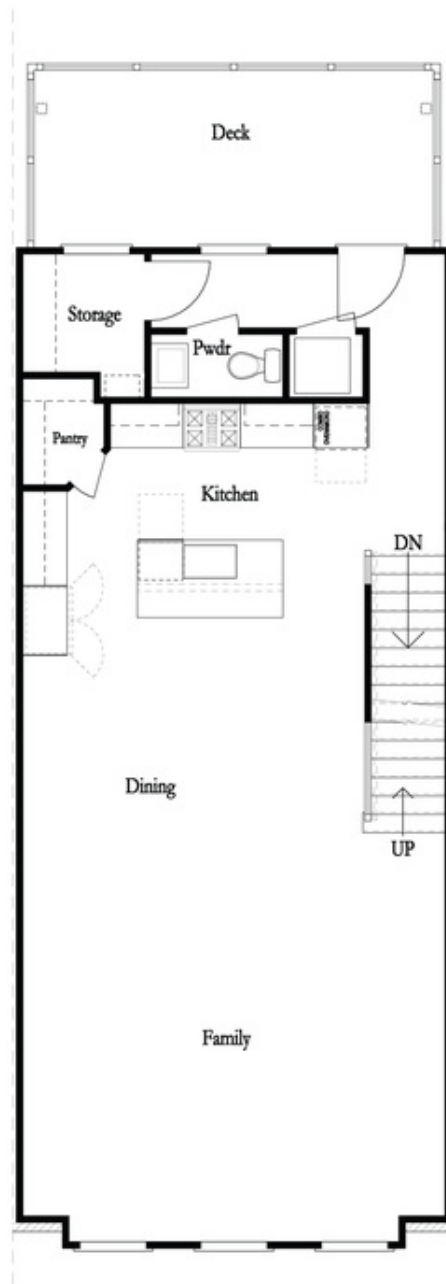
**Want to Know More
About This Home?**

**CONTACT OUR COMMUNITY SALES MANAGER
Call Us @ 470.514.6999**



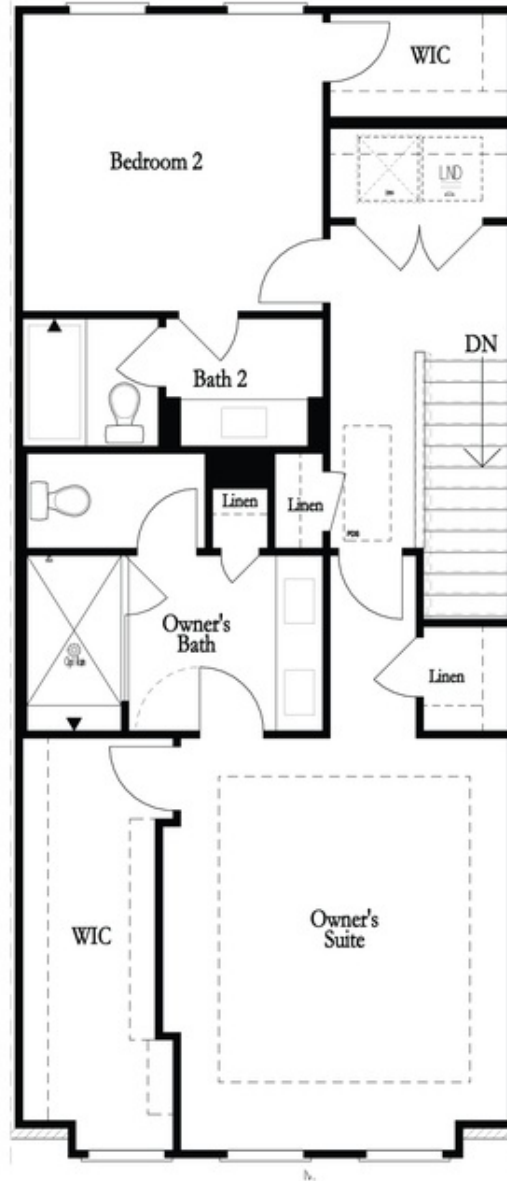
Want to Know More
About This Home?

CONTACT OUR COMMUNITY SALES MANAGER
Call Us @ 470.514.6999



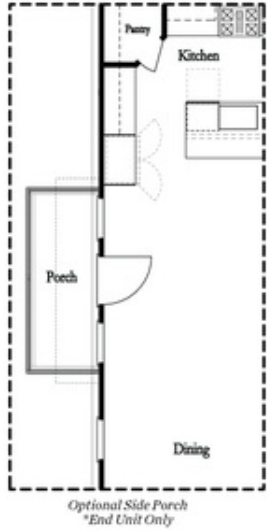
Want to Know More
About This Home?

CONTACT OUR COMMUNITY SALES MANAGER
Call Us @ 470.514.6999

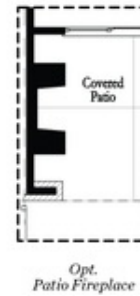
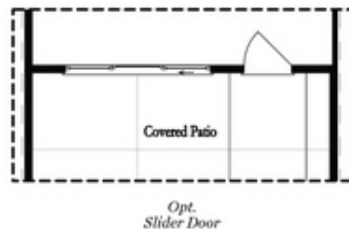
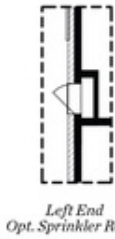


Want to Know More
About This Home?

CONTACT OUR COMMUNITY SALES MANAGER
Call Us @ 470.514.6999



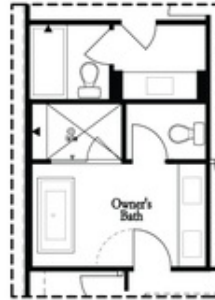
Main Level Options



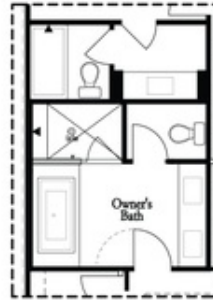
Terrace Level Options

Want to Know More
About This Home?

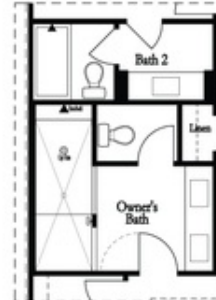
CONTACT OUR COMMUNITY SALES MANAGER
Call Us @ 470.514.6999



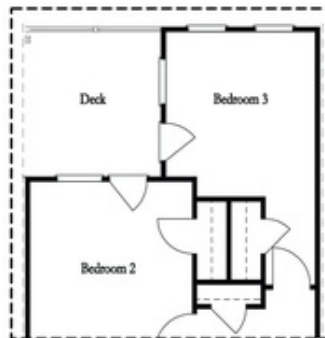
*Opt. Freestanding
 Tub/Shower Combo*



*Opt. Decked
 Tub/Shower Combo*



Opt. Walk-Through Shower



*Opt. Bedroom 3
 *Only Available with Sunroom option
 Laundry Moved to Main Level w/ this Opt.

Upper Level Options

Want to Know More
 About This Home?

CONTACT OUR COMMUNITY SALES MANAGER
 Call Us @ 470.514.6999