



PRICED AT  
**\$735,265**

 2373 Sq Ft

 4 Beds

 3.5 Baths

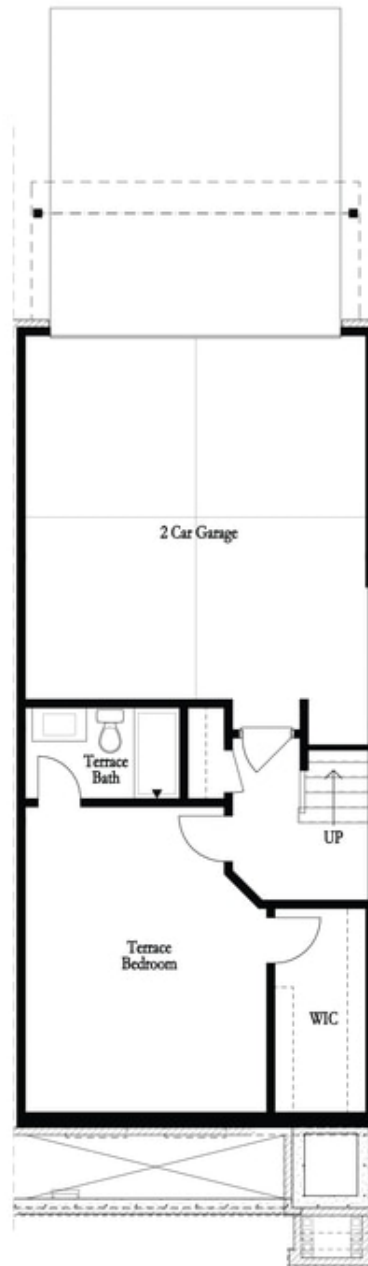
 2 Car Garage

 3.0 Story

Enjoy Fabulous Fall Savings with a new home by The Providence Group and \$5,000 towards closing cost when financing with one of Seller's 5 preferred lenders for contracts written by September 30th. Waterside is a Master Planned Community in Peachtree Corners, situated along the Chattahoochee River! This End Unit Benton II townhome features three sides brick with 2 car garage. Main level features 10' ceilings, a beautiful Quartzite fireplace, and oversized windows for an abundance of natural light. The beautiful kitchen includes Alabaster cabinets, a Driftwood stained island with a Farmhouse sink, soft close doors/drawers - including a trash can pull out, modern black matte hardware, stainless GE profile appliances, sleek Cambria quartz countertops and a walk-in pantry. Open concept on main level! Wonderful sunroom on this floor, perfect for an office! Adjoining the sunroom is a private deck, to enjoy the outdoors. The spacious owner's suite is upstairs along with two guest bedrooms that share access to an upper-level deck! The owner's suite bathroom has dual vanities, a luxe freestanding tub, a generous walk-in shower with black matte fixtures. Additional guest bedroom downstairs on the terrace level with full bath and large walk-in closet. All bedrooms include upgraded hardwood ...

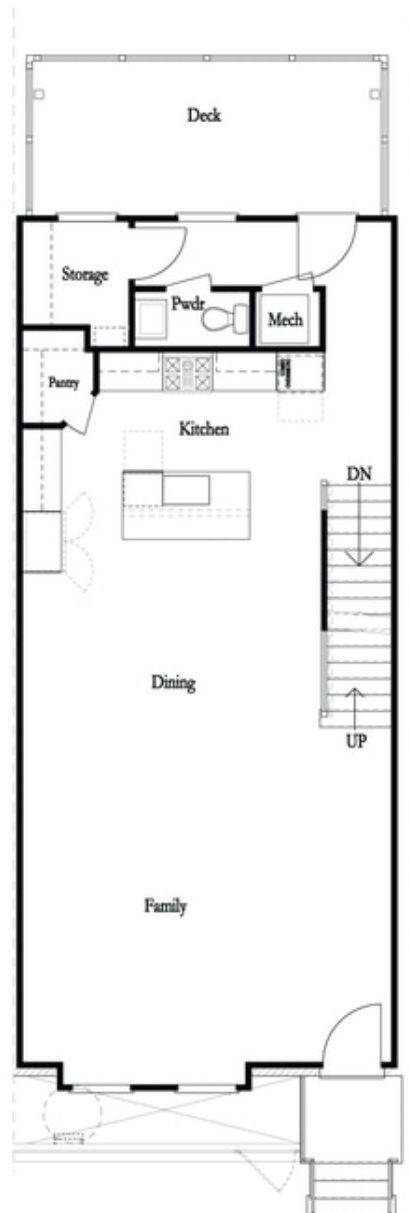
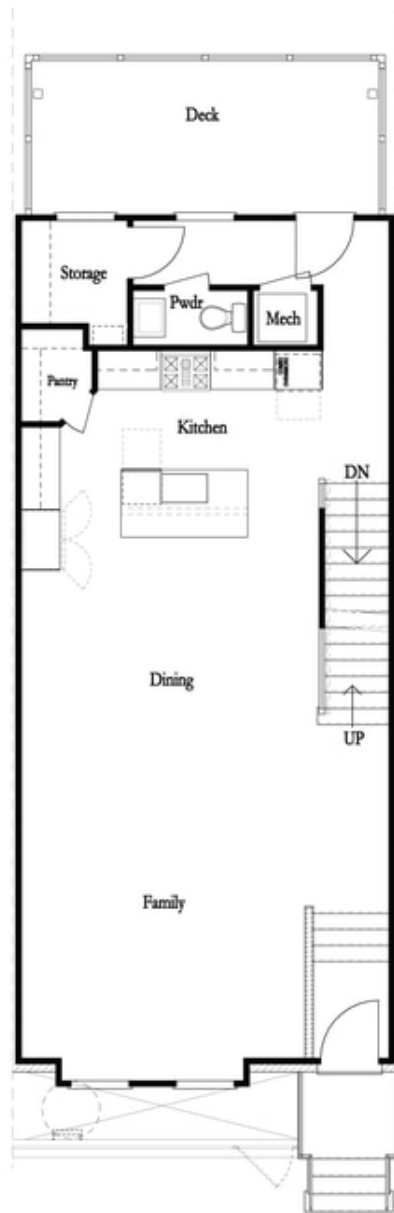
**Want to Know More  
About This Home?**

CONTACT OUR COMMUNITY SALES MANAGER  
Call Us @ 470.514.6999



**Want to Know More  
About This Home?**

CONTACT OUR COMMUNITY SALES MANAGER  
Call Us @ 470.514.6999



**Want to Know More  
About This Home?**

CONTACT OUR COMMUNITY SALES MANAGER  
Call Us @ 470.514.6999



**Want to Know More  
About This Home?**

CONTACT OUR COMMUNITY SALES MANAGER  
Call Us @ 470.514.6999

\* Not All Options are Available in All Communities

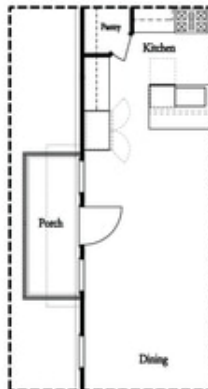


*Left End  
 Opt. Sprinkler Room*



*Right End  
 Opt. Sprinkler Room*

**Terrace Level Options**



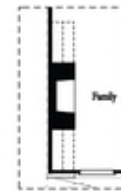
*Optional Side Porch  
 \*End Unit Only*



*Laundry with Optional Bedroom 3 Only*



*Opt. Sunroom*



*Opt. 36" Fireplace*



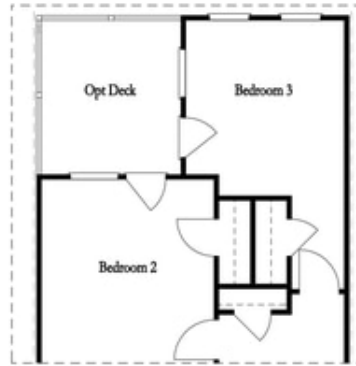
*Opt. Linear Fireplace*

**Main Level Options**

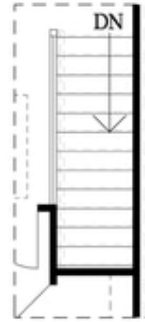
**Want to Know More  
 About This Home?**

CONTACT OUR COMMUNITY SALES MANAGER  
 Call Us @ 470.514.6999

Options



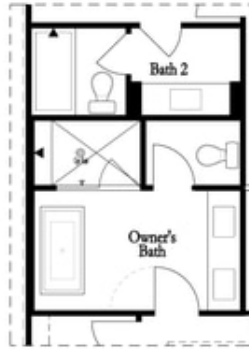
*Opt. Bedroom 3*  
*\*Only available w/ sunroom option*  
*\*Laundry moved to main floor w/ this opt.*



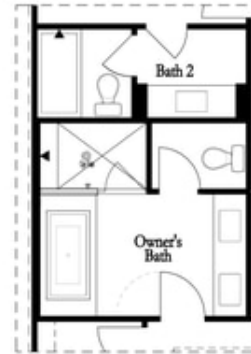
*Opt. Open Rail*



*Opt. Walk-Through  
 Shower*



*Opt. Freestanding  
 Tub/Shower Combo*



*Opt. Decked  
 Tub/Shower Combo*

Third Floor Options

**Want to Know More  
 About This Home?**

CONTACT OUR COMMUNITY SALES MANAGER  
 Call Us @ 470.514.6999