

PRICED AT  
**\$703,755**

 2373 Sq Ft

 4 Beds

 3.5 Baths

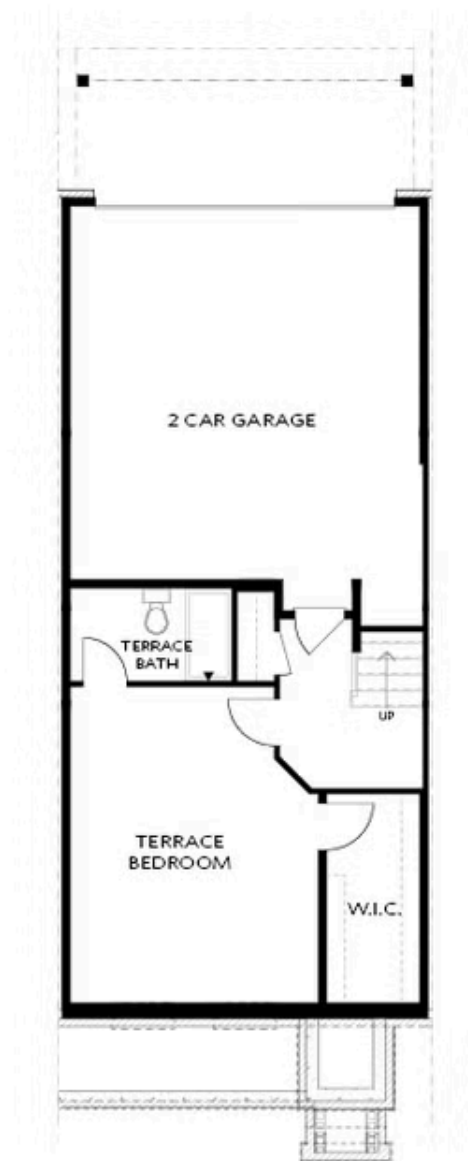
 2 Car Garage

 3.0 Story

Hurry, Summer of Savings with a New home with The Providence Group! \$15,000 YOUR WAY, ask agent for details! Only a few townhomes remain in Phase 2!! Beautiful Brownstone townhome in the newest development in Peachtree Corners! Nestled along the Chattahoochee, there are walking trails, and resort amenities! The Benton II features three sides brick with 2 car garage. When you open the front door you are greeted with 10' ceilings, a beautiful White painted Brick fireplace, and oversized windows to let in all the natural light. You are welcomed into this stunning home overlooking the kitchen. The overall aesthetic of the kitchen is one of modern elegance with a touch of charm. The alabaster cabinets, provide a clean and bright backdrop, making the space feel open and inviting. The Calacatta Miraggio Gold countertops add a luxurious element with their dramatic gold veining, perfectly accented by the champagne hardware. The oversized island introduces a sleek cabinets on both sides, while the Ryman Shaw flooring ensures durability and a cohesive look. This kitchen combines sophistication with warmth, creating a space that is both stylish and welcoming. This outstanding kitchen is outfitted with GE Profile stainless appliances that gives modernity, functionality, and ...

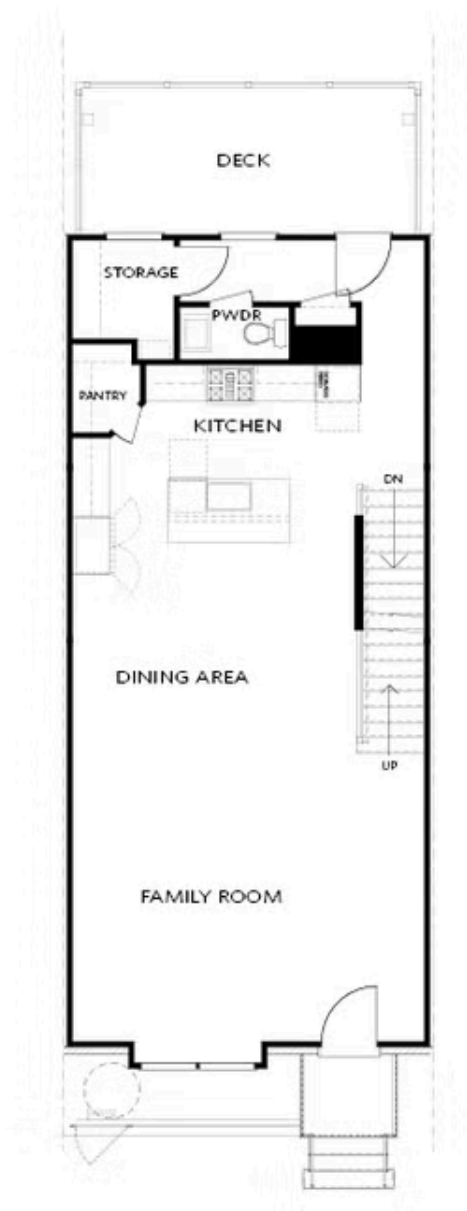
**Want to Know More  
About This Home?**

CONTACT OUR COMMUNITY SALES MANAGER  
Call Us @ 470.514.6999



Want to Know More  
About This Home?

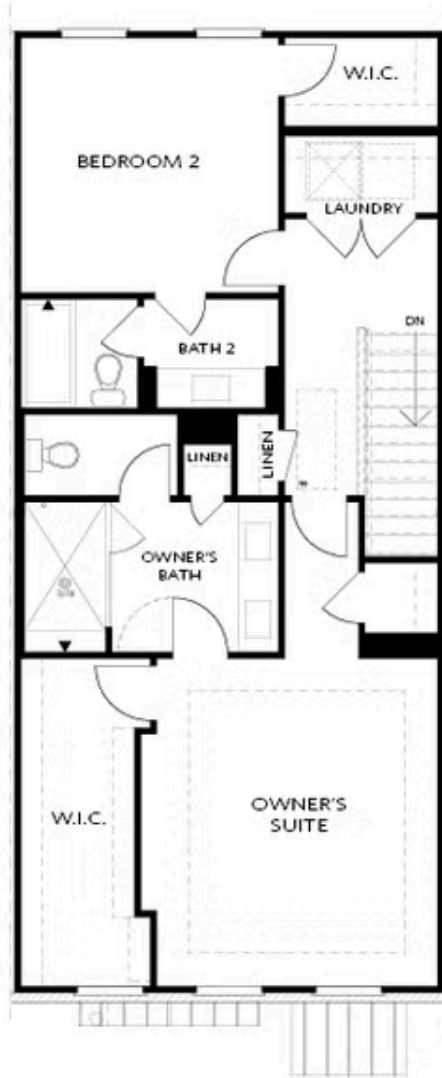
CONTACT OUR COMMUNITY SALES MANAGER  
Call Us @ 470.514.6999



Elevation R

**Want to Know More  
About This Home?**

CONTACT OUR COMMUNITY SALES MANAGER  
Call Us @ 470.514.6999



Elevation R

Want to Know More  
About This Home?

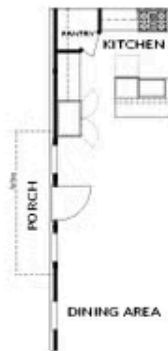
CONTACT OUR COMMUNITY SALES MANAGER  
Call Us @ 470.514.6999



Laundry with Opt. 3rd Bedroom Only  
(not available with 2 bedroom layout)



OPT Sunroom



OPT Side Porch  
\*End Unit Only



OPT Fireplace



OPT Linear Fireplace

Want to Know More  
About This Home?

CONTACT OUR COMMUNITY SALES MANAGER  
Call Us @ 470.514.6999



OPT Open Rail



OPT Bedroom 3 on Third Floor

\*Only Available with Sunroom OPT

\*Laundry Moved to Main Floor



OPT Walk-Through Shower



OPT Freestanding Tub with  
Seperate Shower



OPT Decked Tub with  
Seperate Shower

Want to Know More  
About This Home?

CONTACT OUR COMMUNITY SALES MANAGER  
Call Us @ 470.514.6999