



PRICED AT  
**\$666,095**

 2201 Sq Ft

 3 Beds

 3.5 Baths

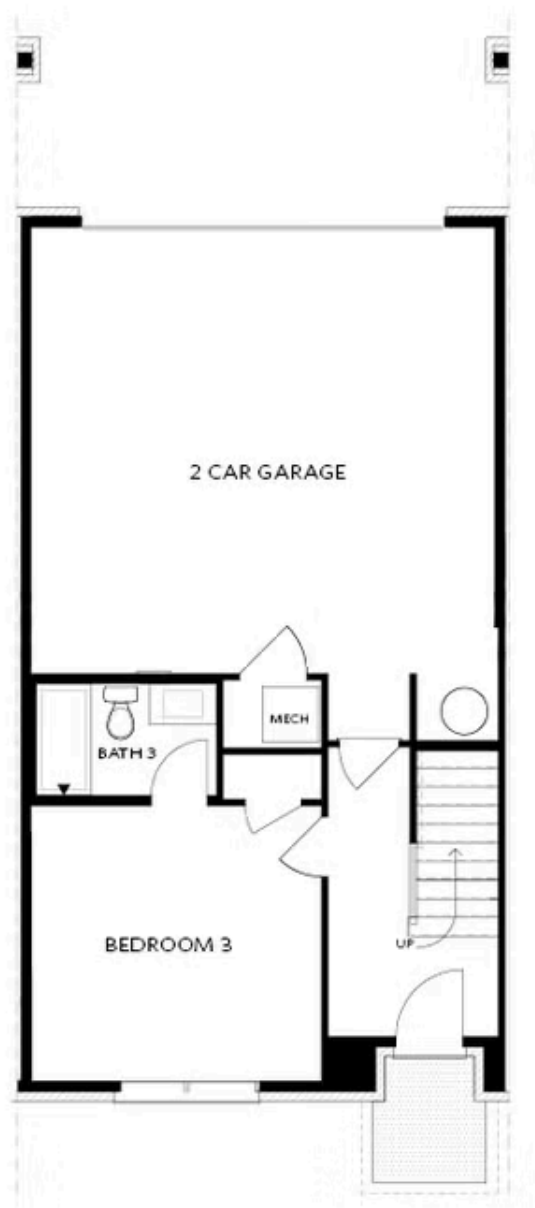
 2 Car Garage

 3.0 Story

FALL INTO SAVINGS! Introducing The Grayson II Floor Plan to Waterside! Spacious 3-story townhomes with private yards, maintained by the HOA. Upon entrance, step into the terrace level with a full bedroom & bathroom. Perfect for guests, or as multipurpose space! 2-car garage with 2-car adjacent driveway. 4 parking spaces for approved vehicles. Heading up to the main floor, your will discover an oversized living area that blends with sunroom and back porch. Many ways to set up furniture on this level due to the open concept nature; adaptable and flexible. Bright light from oversized windows. Gas fireplace in living and half bath for guest use. Upstairs is a nicely sized Owner's Suite with walk-in closet and Luxury Owner's Bathroom. Laundry upstairs in hall and secondary bedroom roommate style. Great plans at great prices!! You will have easy access to our full-sized pool, 2-story clubhouse with full gym, and Amenity Area. New Gated Master Planned Community backing up to the Chattahoochee River, 1 mile from The Forum w/shops & restaurants, in the heart of Peachtree Corners. Fabulous amenity package includes clubhouse, park areas, pool, trails down by the River, fitness ctr. & more. PHOTOS NOT OF ACTUAL UNIT. For driving ...

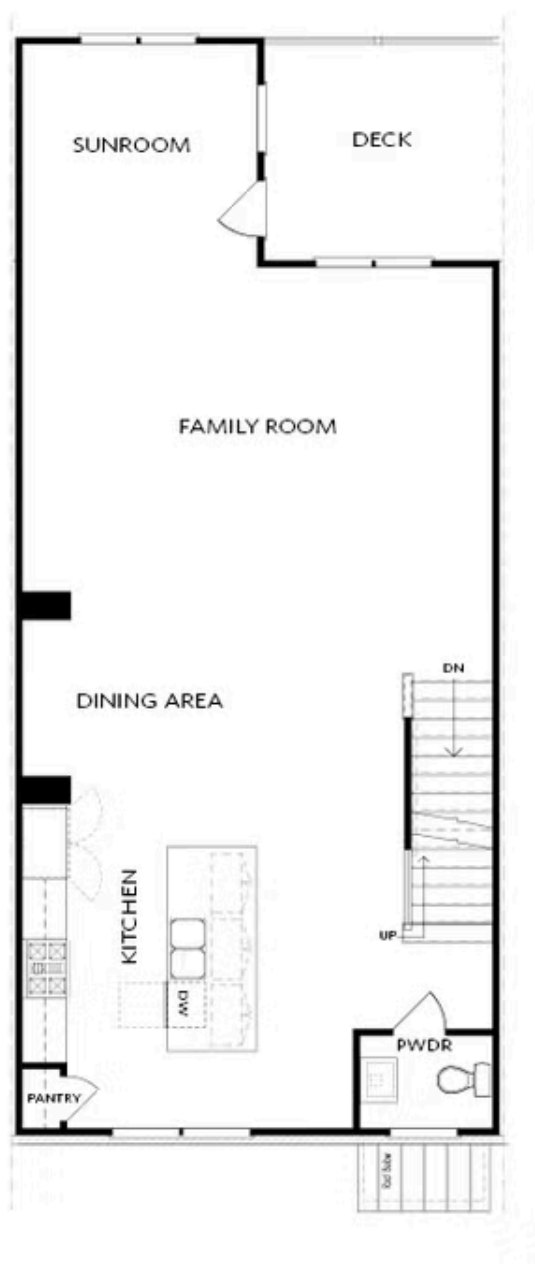
**Want to Know More  
About This Home?**

CONTACT OUR COMMUNITY SALES MANAGER  
Call Us @ 470.514.6999



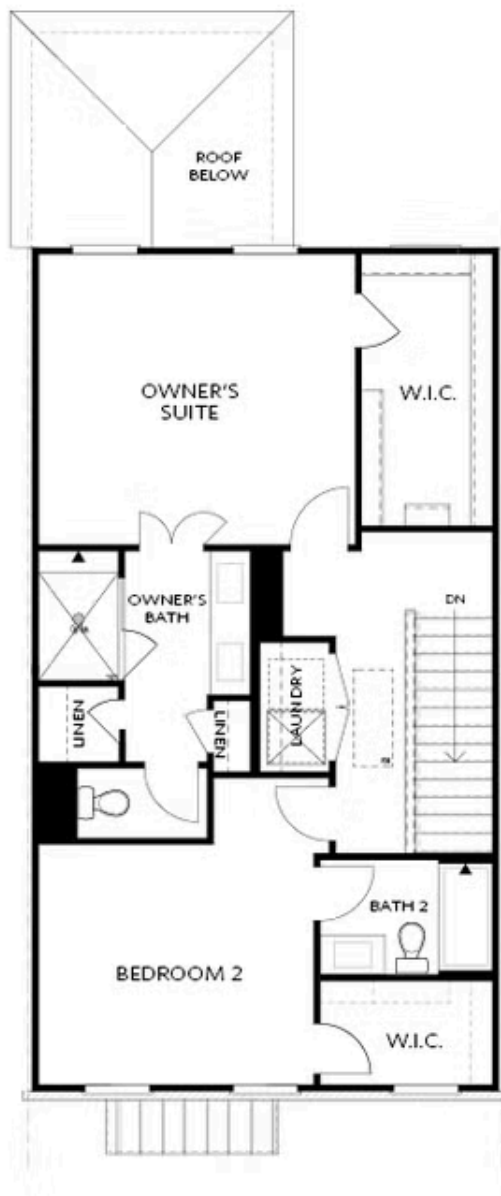
Want to Know More  
About This Home?

CONTACT OUR COMMUNITY SALES MANAGER  
Call Us @ 470.514.6999



Want to Know More  
About This Home?

CONTACT OUR COMMUNITY SALES MANAGER  
Call Us @ 470.514.6999



Want to Know More  
About This Home?

CONTACT OUR COMMUNITY SALES MANAGER  
Call Us @ 470.514.6999



OPT Shower on First Floor



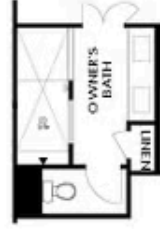
OPT Linear Fireplace



OPT Fireplace



OPT Shower & Decked Tub



OPT Walk-Through Shower

Want to Know More  
About This Home?

CONTACT OUR COMMUNITY SALES MANAGER  
Call Us @ 470.514.6999