



PRICED AT  
**\$714,160**

 **2170 Sq Ft**

 **3 Beds**

 **3.5 Baths**

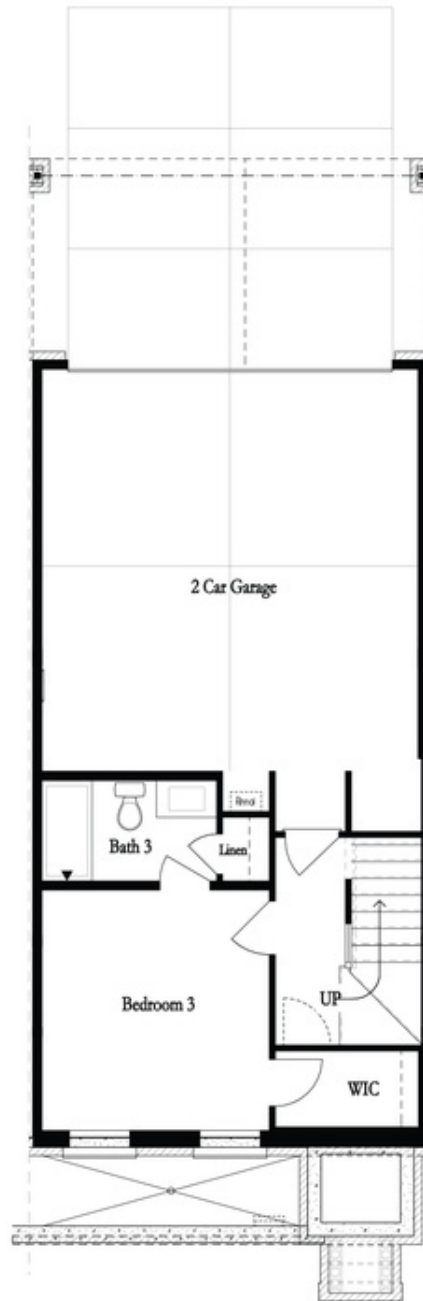
 **2 Car Garage**

 **3.0 Story**

**New Year New You! - \$20,000 ANYWAY** when financing with one of Seller's preferred lenders for contracts written by JAN 31st, 2025. Welcome to Waterside a Gated Master planned community nestled on the Chattahoochee River! Introducing The Chamberlain plan, this exquisite home features 3 bedrooms and 3.5 baths. You are welcomed into this stunning home overlooking the kitchen. The overall aesthetic of the kitchen is one of modern elegance with a touch of charm. The white cabinets provide a clean and bright backdrop, making the space feel open and inviting. The Cambria Portrush countertops add a luxurious element with their dramatic gold veining, perfectly accented by the champagne hardware. The oversized island introduces a sleek cabinets on both sides, while the Riverside Shaw flooring ensures durability and a cohesive look. This kitchen combines sophistication with warmth, creating a space that is both stylish and welcoming. This outstanding kitchen is outfitted with GE Profile stainless appliances that gives modernity, functionality, and style. The living room is the focal point, featuring ample space for relaxation and entertainment. Large windows invite abundant natural light, creating an airy and inviting atmosphere. This space can accommodate plenty of comfortable seating arrangements and encourages gatherings with ...

**Want to Know More  
About This Home?**

**CONTACT OUR COMMUNITY SALES MANAGER**  
**Call Us @ 470.514.6999**



Want to Know More  
About This Home?

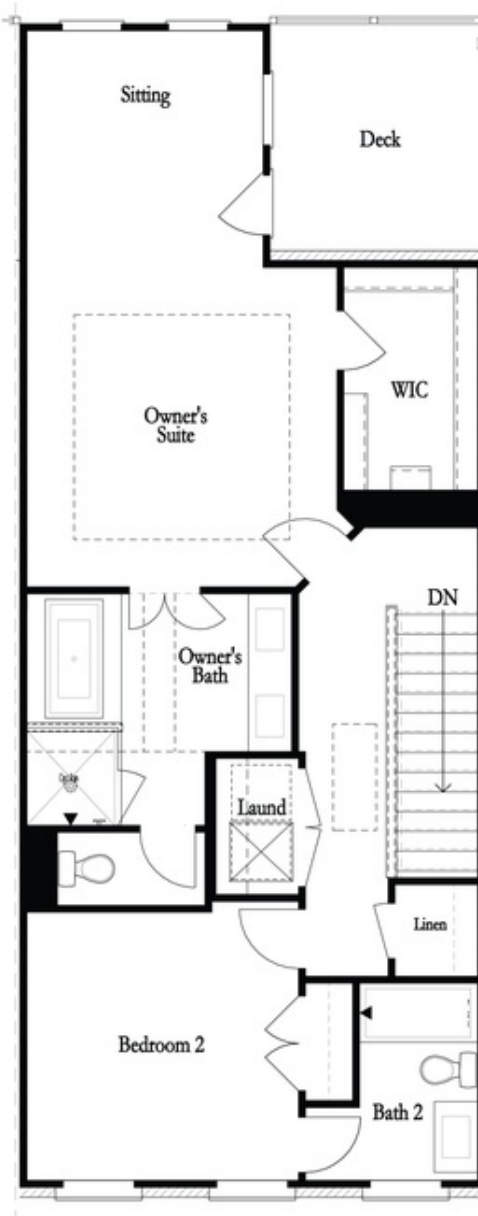
CONTACT OUR COMMUNITY SALES MANAGER  
Call Us @ 470.514.6999



Second Floor w. Dropped Foyer

Want to Know More  
About This Home?

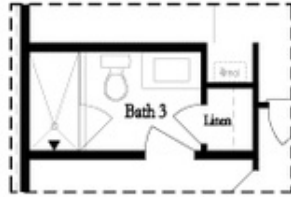
CONTACT OUR COMMUNITY SALES MANAGER  
Call Us @ 470.514.6999



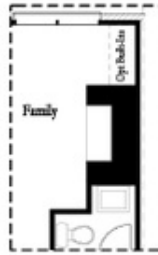
Want to Know More  
About This Home?

CONTACT OUR COMMUNITY SALES MANAGER  
Call Us @ 470.514.6999

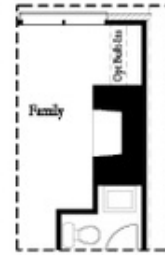
Optional Layouts



*Opt. Shower*



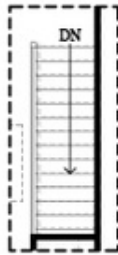
*Opt. Linear Fireplace*



*Opt. Fireplace*

First Floor Options

Second Floor Options



*Opt. Open Rail*



*Opt. Walk-Through Shower*



*Opt. Freestanding Tub/Shower Combo*

Third Floor Options

Want to Know More  
 About This Home?

CONTACT OUR COMMUNITY SALES MANAGER  
 Call Us @ 470.514.6999