



PRICED AT  
**\$658,465**

 **2201 Sq Ft**

 **3 Beds**

 **3.5 Baths**

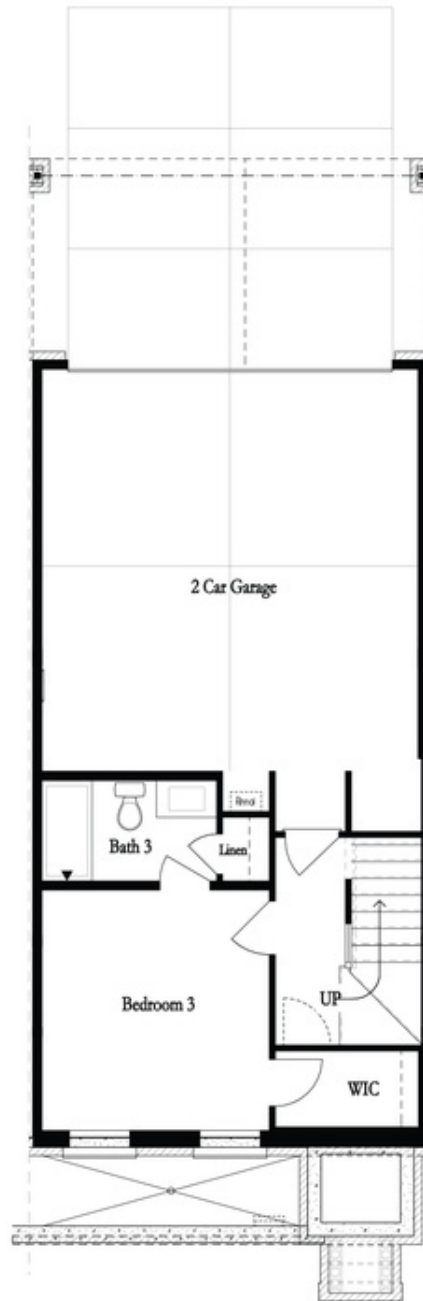
 **2 Car Garage**

 **3.0 Story**

**Home for the Holidays with The Providence Group! \$20K your way for contracts closing in December! Introducing only a few CHAMBERLAIN floor plan units to Waterside! Our popular Chamberlain plan is available at Waterside for a limited time. Guest parking directly in front of building! Walk into the main level off raised foyer. Kitchen in front with additional cabinets on the front & back of island for extra storage. Oversized living area blends with sunroom and back porch. So many way this can be set up - very adaptable and flexible floorplan. Gas fireplace in living and half bath for guest use. Downstairs lives A full bedroom/bathroom/closet off the 2 car garage. LONG driveway for this location, can fully fit two additional cars. Upstairs you will find the oversized Owner's Suite with sitting room and private porch! Laundry upstairs in hall and secondary bedroom roommate style. Great plans at great prices!! You will have easy access to our full-sized pool, 2-story clubhouse with full gym, and Amenity Area. New Gated Master Planned Community backing up to the Chattahoochee River, 1 mile from The Forum w/shops & restaurants, in the heart of Peachtree Corners. Fabulous amenity package includes clubhouse, park areas, ...**

**Want to Know More  
About This Home?**

**CONTACT OUR COMMUNITY SALES MANAGER**  
**Call Us @ 470.514.6999**



Want to Know More  
About This Home?

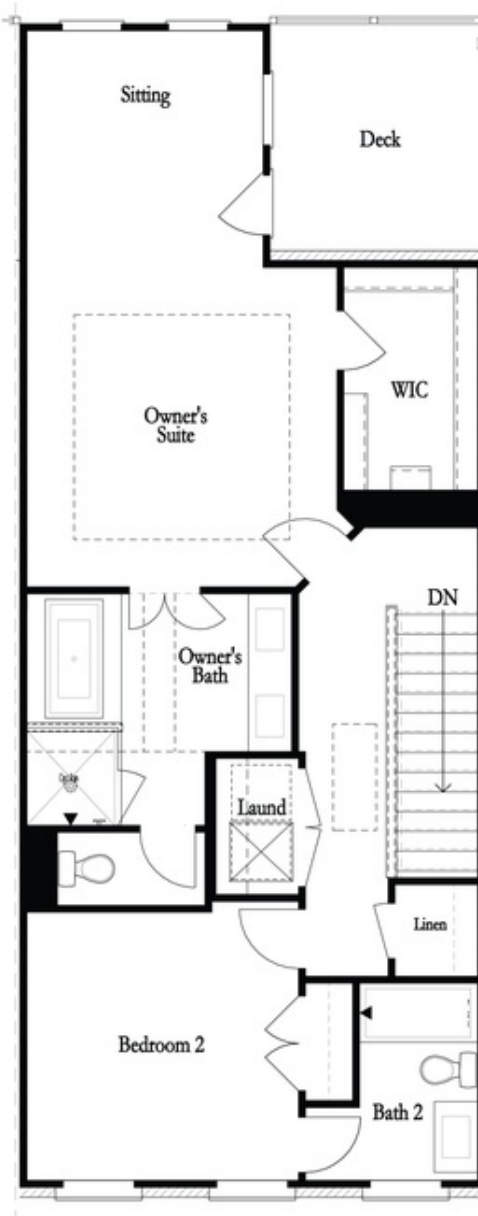
CONTACT OUR COMMUNITY SALES MANAGER  
Call Us @ 470.514.6999



Second Floor w. Dropped Foyer

Want to Know More  
About This Home?

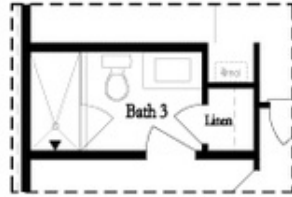
CONTACT OUR COMMUNITY SALES MANAGER  
Call Us @ 470.514.6999



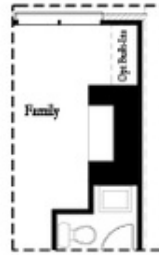
Want to Know More  
About This Home?

CONTACT OUR COMMUNITY SALES MANAGER  
Call Us @ 470.514.6999

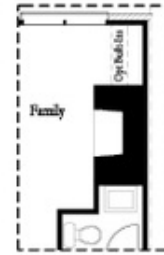
Optional Layouts



Opt. Shower



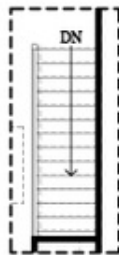
Opt. Linear Fireplace



Opt. Fireplace

First Floor Options

Second Floor Options



Opt. Open Rail



Opt. Walk-Through Shower



Opt. Freestanding Tub/Shower Combo

Third Floor Options

Want to Know More  
 About This Home?

CONTACT OUR COMMUNITY SALES MANAGER  
 Call Us @ 470.514.6999