



PRICED AT
\$674,165

 2201 Sq Ft

 3 Beds

 3.5 Baths

 2 Car Garage

 3.0 Story

The last of our Chamberlain Townhome plans are MOVE-IN READY! Summer of Savings! \$10,000 anyway, ask agent for details! Guest parking directly in front of building! Walk into the main level off raised foyer. Kitchen in front with additional cabinets on the front & back of island for extra storage. Oversized living area blends with sunroom and back porch. So many way this can be set up - very adaptable and flexible floorplan. Gas fireplace in living and half bath for guest use. Downstairs lives A full bedroom/bathroom/closet off the 2 car garage. LONG driveway for this location, can fully fit two additional cars. Upstairs you will find the oversized Owner's Suite with sitting room and private porch! Laundry upstairs in hall and secondary bedroom roommate style. Great plans at great prices!! You will have easy access to our full-sized pool, 2-story clubhouse with full gym, and Amenity Area. New Gated Master Planned Community backing up to the Chattahoochee River, 1 mile from The Forum w/shops & restaurants, in the heart of Peachtree Corners. Fabulous amenity package includes clubhouse, park areas, pool, trails down by the River, fitness ctr. & more. PHOTOS NOT OF ACTUAL HOME BUT A PREVIOUSLY BUILT ...

**Want to Know More
About This Home?**

CONTACT OUR COMMUNITY SALES MANAGER
Call Us @ 470.514.6999



Elevation R

Want to Know More
About This Home?

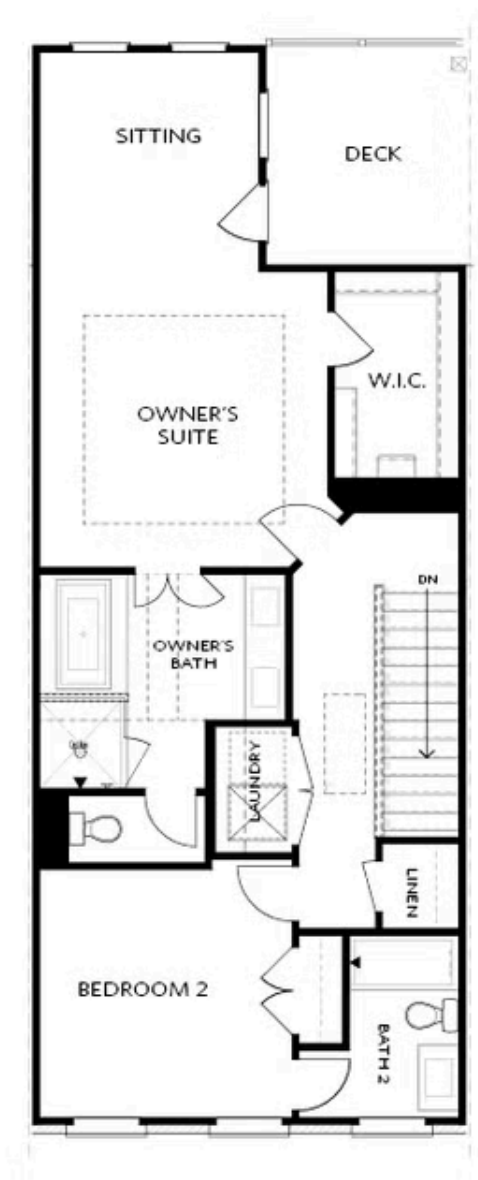
CONTACT OUR COMMUNITY SALES MANAGER
Call Us @ 470.514.6999



Elevation R

Want to Know More
About This Home?

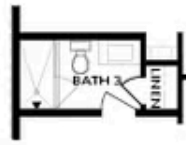
CONTACT OUR COMMUNITY SALES MANAGER
Call Us @ 470.514.6999



Elevation R

**Want to Know More
About This Home?**

CONTACT OUR COMMUNITY SALES MANAGER
Call Us @ 470.514.6999



OPT Shower

BASEMENT



OPT Linear Fireplace

SECOND FLOOR



OPT Fireplace



OPT Open Rail



OPT Walk-Through Shower



OPT Freestanding Tub/Shower Combo

Want to Know More
About This Home?

CONTACT OUR COMMUNITY SALES MANAGER
Call Us @ 470.514.6999