



PRICED AT  
**\$673,940**

 2170 Sq Ft

 3 Beds

 3.5 Baths

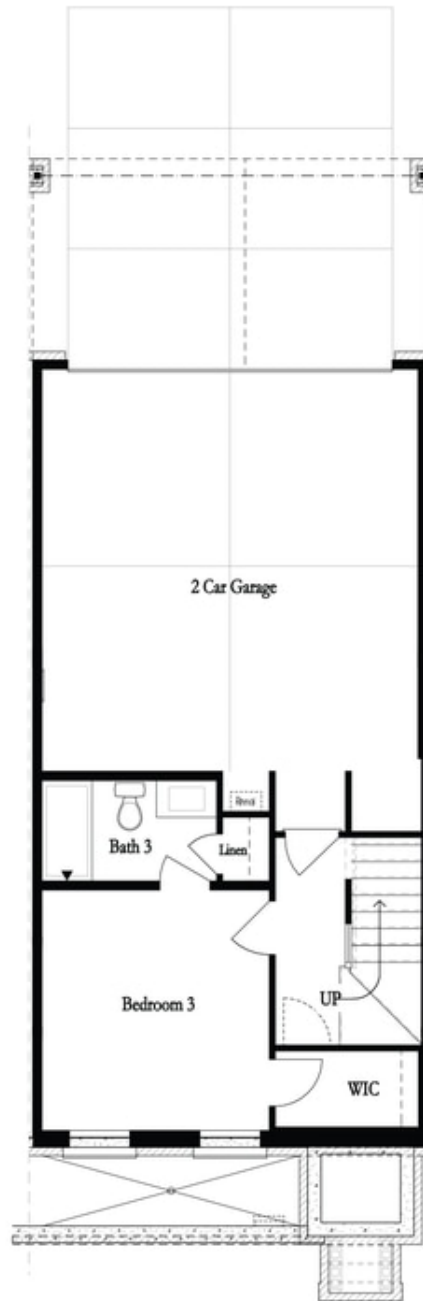
 2 Car Garage

 3.0 Story

**FALL INTO SAVINGS - \$20,000 ANYWAY** when financing with one of Seller's preferred lenders for contracts written in October and closing in November. Welcome to Waterside, a Gated Master planned community nestled on the Chattahoochee River! Introducing The Chamberlain plan, this open concept home features 3 bedrooms and 3.5 baths. The kitchen features beautiful White Cabinetry, Calacatta Arno Quartz countertops, with Passion Blanco Backsplash, Farmhouse sink and Gold hardware. This kitchen is outfitted with GE Profile stainless appliances that adds to the functionality and style. The living room allows ample space for relaxation and entertainment. Cozy up around your gas fireplace with Painted white Shiplap surround and floating mantel, stained to match your flooring. Large windows invite abundant natural light, creating an airy and inviting atmosphere. This space can accommodate plenty of comfortable seating arrangements and encourages gatherings with family and friends. The second floor also includes a bright sunroom, leading to a covered deck. Head up to the third floor where you'll step into your Oversized Owner's Suite with sitting room and private deck, ideal for relaxing and enjoying the outdoors. Your En-Suite bath includes a large walk-in shower and spacious double vanity with quartz counter tops. Secondary bedroom ...

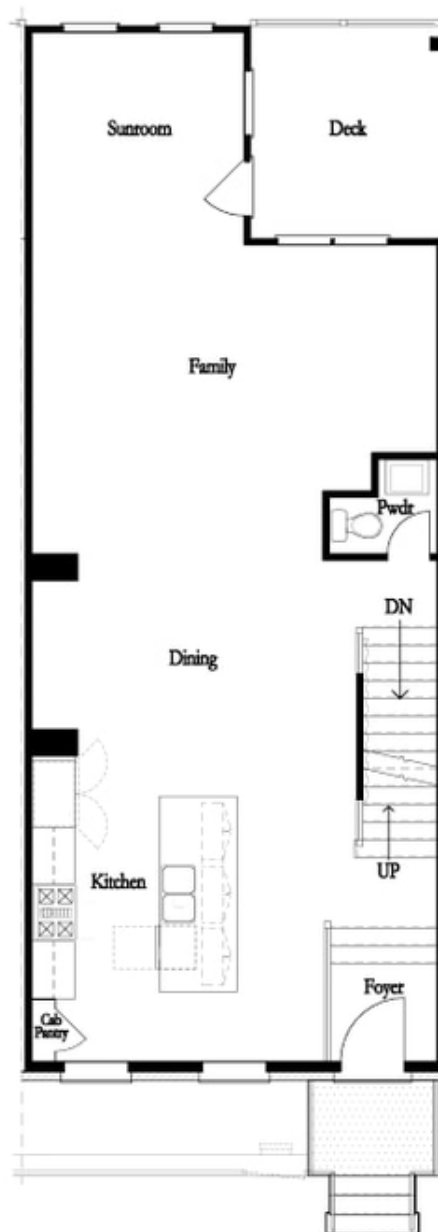
**Want to Know More  
About This Home?**

CONTACT OUR COMMUNITY SALES MANAGER  
Call Us @ 470.514.6999



**Want to Know More  
About This Home?**

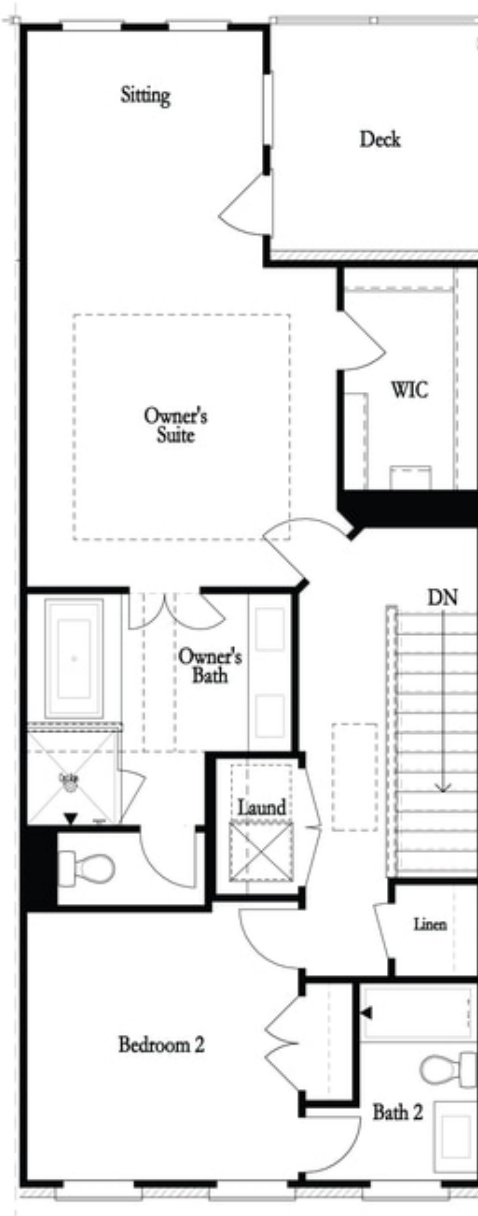
CONTACT OUR COMMUNITY SALES MANAGER  
Call Us @ 470.514.6999



Second Floor w. Dropped Foyer

**Want to Know More  
About This Home?**

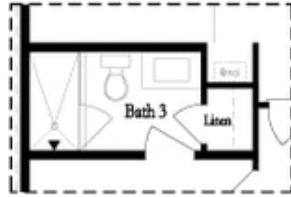
CONTACT OUR COMMUNITY SALES MANAGER  
Call Us @ 470.514.6999



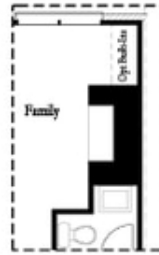
**Want to Know More  
About This Home?**

CONTACT OUR COMMUNITY SALES MANAGER  
Call Us @ 470.514.6999

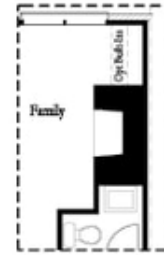
Optional Layouts



*Opt. Shower*



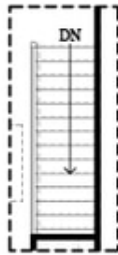
*Opt. Linear Fireplace*



*Opt. Fireplace*

First Floor Options

Second Floor Options



*Opt. Open Rail*



*Opt. Walk-Through Shower*



*Opt. Freestanding Tub/Shower Combo*

Third Floor Options

**Want to Know More  
 About This Home?**

CONTACT OUR COMMUNITY SALES MANAGER  
 Call Us @ 470.514.6999