



PRICED AT
\$660,770

 2170 Sq Ft

 3 Beds

 3.5 Baths

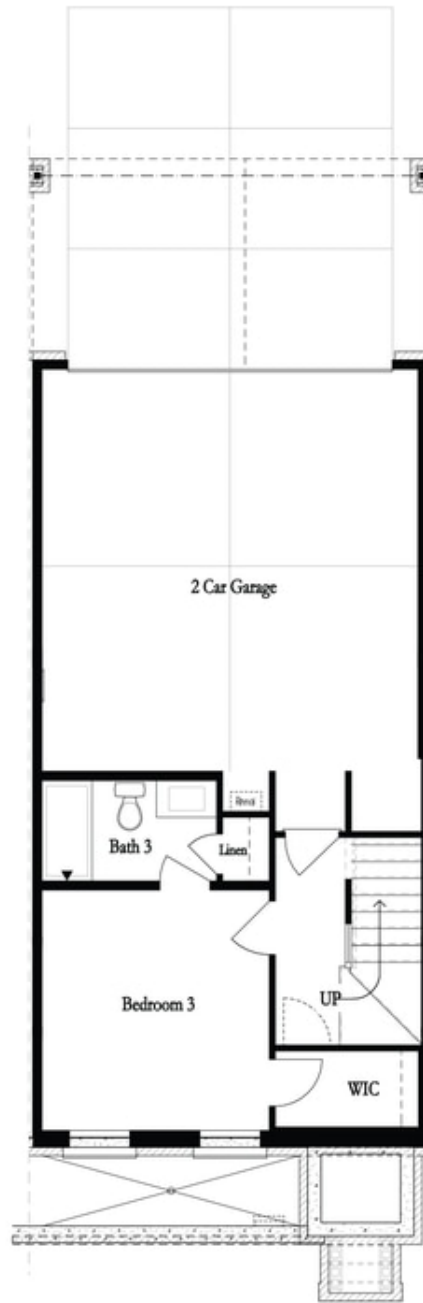
 2 Car Garage

 3.0 Story

Come check out the Sizzling Summer Saving with a New home by The Providence Group! \$10,000 towards closing cost when financing with one of Seller's preferred lenders for contracts written by August 31st. Welcome to Waterside a Gated Master planned community nestled on the Chattahoochee River! Introducing The Chamberlain plan, this open concept home features 3 bedrooms and 3.5 baths. A white kitchen with Calacatta Miraggio countertops and Brushed Nickel hardware exudes a sleek, modern elegance with a touch of contrast featuring a clean white background with delicate veining in shades of gold, creating a timeless and sophisticated look. This kitchen is outfitted with GE Profile stainless appliances that adds to the functionality, and style. The living room allows ample space for relaxation and entertainment. Large windows invite abundant natural light, creating an airy and inviting atmosphere. This space can accommodate plenty of comfortable seating arrangements and encourages gatherings with family and friends. The second floor even includes a bright sunroom that makes the perfect office. Enjoy a private deck just off the sunroom, ideal for relaxing and enjoying the outdoors. On the top floor, step into a luxurious owner's suite that feels like a serene escape within your own ...

**Want to Know More
About This Home?**

CONTACT OUR COMMUNITY SALES MANAGER
Call Us @ 470.514.6999



**Want to Know More
About This Home?**

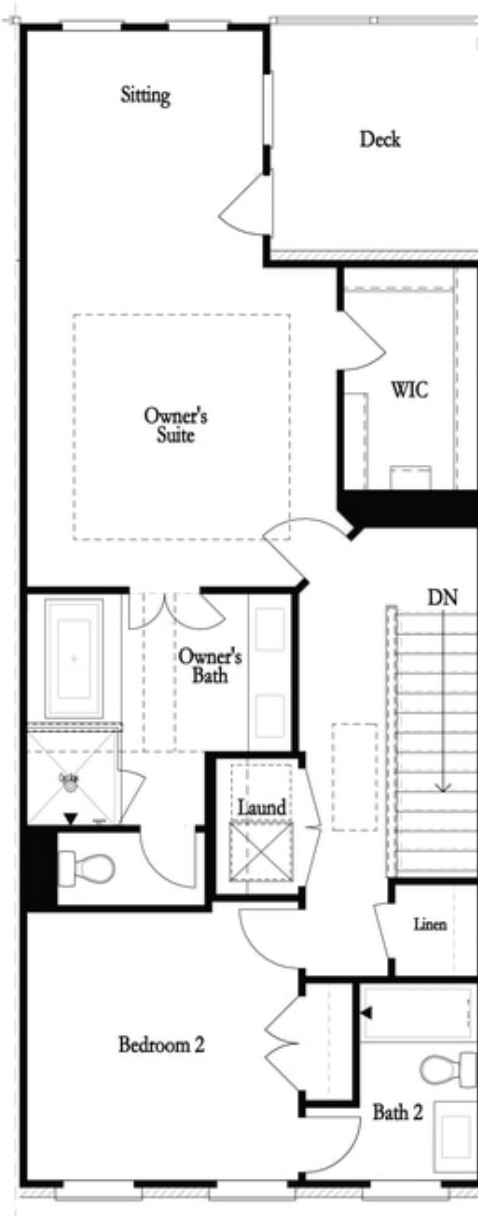
CONTACT OUR COMMUNITY SALES MANAGER
Call Us @ 470.514.6999



Second Floor w. Dropped Foyer

**Want to Know More
About This Home?**

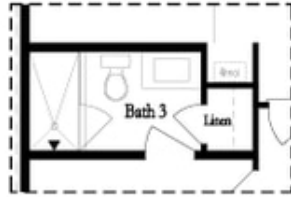
CONTACT OUR COMMUNITY SALES MANAGER
Call Us @ 470.514.6999



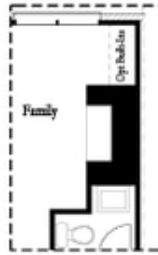
**Want to Know More
About This Home?**

CONTACT OUR COMMUNITY SALES MANAGER
Call Us @ 470.514.6999

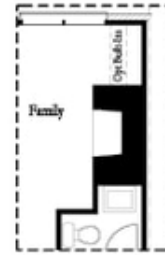
Optional Layouts



Opt. Shower



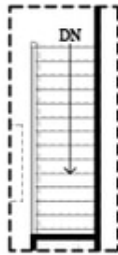
Opt. Linear Fireplace



Opt. Fireplace

First Floor Options

Second Floor Options



Opt. Open Rail



Opt. Walk-Through Shower



Opt. Freestanding Tub/Shower Combo

Third Floor Options

**Want to Know More
 About This Home?**

CONTACT OUR COMMUNITY SALES MANAGER
 Call Us @ 470.514.6999