



PRICED AT
\$668,280

 **2170 Sq Ft**

 **3 Beds**

 **3.5 Baths**

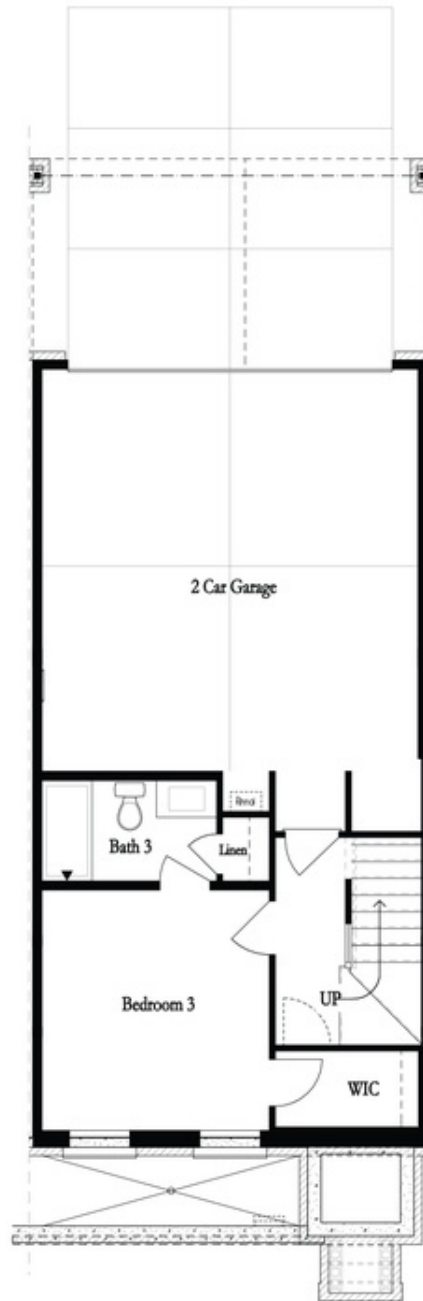
 **2 Car Garage**

 **3.0 Story**

Come check out the Sizzling Summer Saving with a New home by The Providence Group! \$5,000 towards closing cost when financing with one of Seller's preferred lenders. Welcome to Waterside a Gated Master planned community nestled on the Chattahoochee River! Introducing The Chamberlain plan, this exquisite home features 3 bedrooms and 3.5 baths. As you enter this beauty your invited into a white kitchen with Cambria Ella countertops and black matte hardware that exudes a sleek, modern elegance with a hint of contrast. Imagine walking into the space and being greeted by pristine white cabinetry, with a subtle satin finish to enhance the clean aesthetic. The Cambria Ella countertops is the centerpiece, featuring a soft white background with delicate veining in shades of gray, creating a timeless and sophisticated look. This outstanding kitchen is outfitted with GE Profile stainless appliances that gives modernity, functionality, and style. The living room is the focal point, featuring ample space for relaxation and entertainment. Large windows invite abundant natural light, creating an airy and inviting atmosphere. This space can accommodate plenty of comfortable seating arrangements and encourages gatherings with family and friends. On the rear of of the second floor features a sunny sunroom ...

Want to Know More
About This Home?

CONTACT OUR COMMUNITY SALES MANAGER
Call Us @ 470.514.6999



Want to Know More
About This Home?

CONTACT OUR COMMUNITY SALES MANAGER
Call Us @ 470.514.6999



Second Floor w. Dropped Foyer

Want to Know More
About This Home?

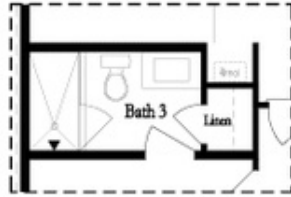
CONTACT OUR COMMUNITY SALES MANAGER
Call Us @ 470.514.6999



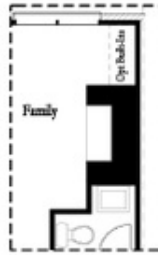
Want to Know More
About This Home?

CONTACT OUR COMMUNITY SALES MANAGER
Call Us @ 470.514.6999

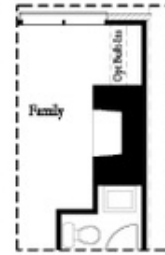
Optional Layouts



Opt. Shower



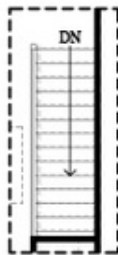
Opt. Linear Fireplace



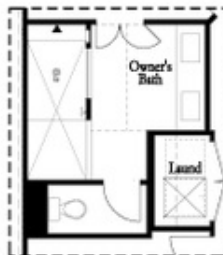
Opt. Fireplace

First Floor Options

Second Floor Options



Opt. Open Rail



Opt. Walk-Through Shower



Opt. Freestanding Tub/Shower Combo

Third Floor Options

Want to Know More
 About This Home?

CONTACT OUR COMMUNITY SALES MANAGER
 Call Us @ 470.514.6999