




PRICED AT  
**\$548,850**

 2517 Sq Ft

 3 Beds

 4.0 Baths

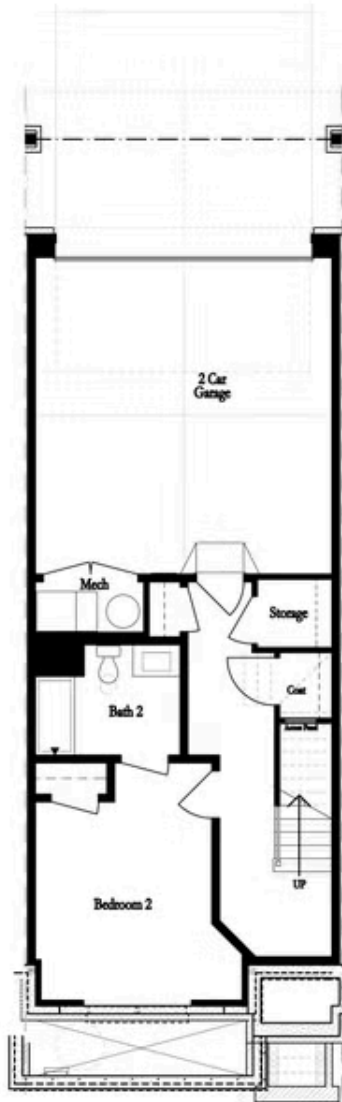
 2 Car Garage

 3.0 Story

Jacobsen II plan - UNDER CONSTRUCTION, Framing now! New Gated Master Planned Community is beautiful Peachtree Corners. Neighborhood backs up to Chattahoochee River. 1 mile to The Forum Shopping & Restaurants in an amazing location. Gated community for increased privacy, surrounded by beautiful lush trees with walking trails planned to line the entire community. Luxury state-of-the-art amenity package with Swim, Fitness, Parks, Open Lawns, multiple Pickleball courts, gathering Clubhouse & more! A rare opportunity that won't last! For GPS, please use 4411 E Jones Bridge Road - Peachtree Corners, GA 30092

**Want to Know More  
About This Home?**

CONTACT OUR COMMUNITY SALES MANAGER  
Call Us @ 470.514.6999



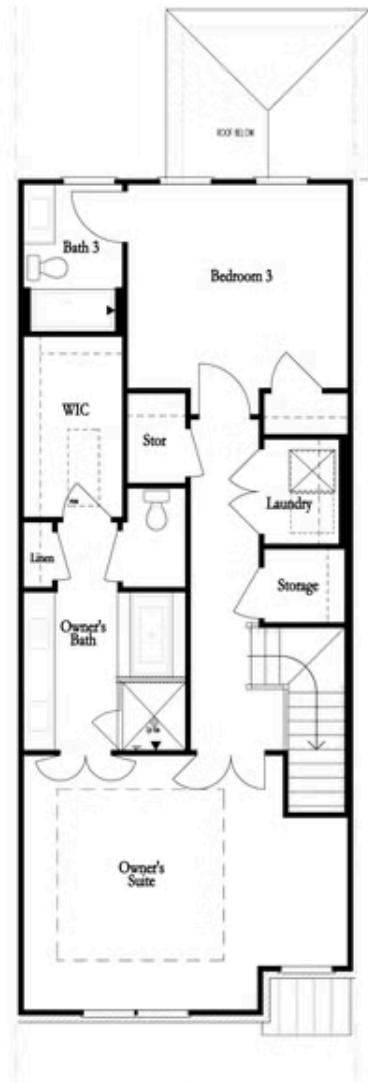
FIRST FLOOR



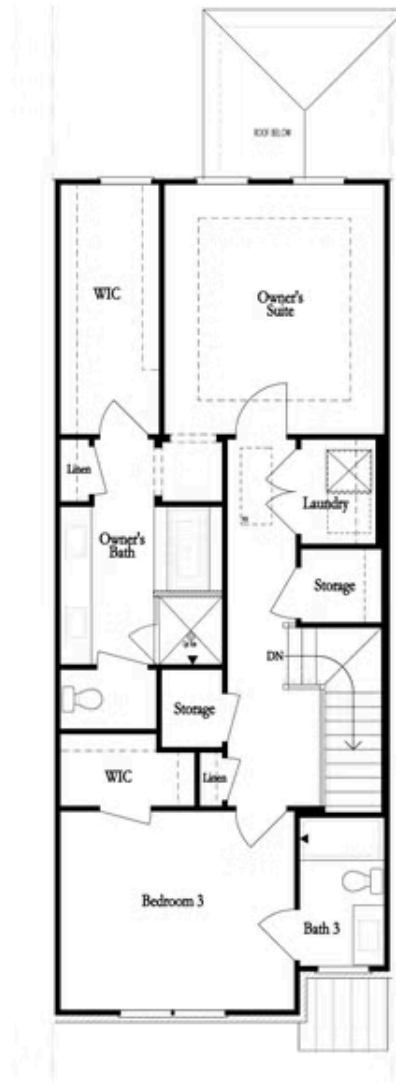
SECOND FLOOR

Want to Know More  
About This Home?

CONTACT OUR COMMUNITY SALES MANAGER  
Call Us @ 470.514.6999



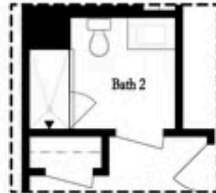
THIRD FLOOR  
OWNER'S FRONT



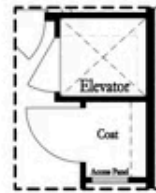
THIRD FLOOR  
OWNER'S REAR

Want to Know More  
About This Home?

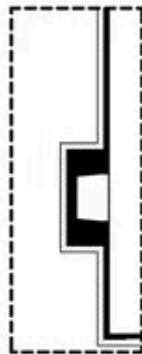
CONTACT OUR COMMUNITY SALES MANAGER  
Call Us @ 470.514.6999



Opt. Shower  
on First Floor Bath



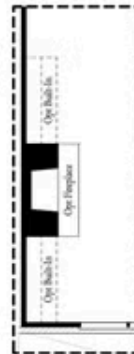
Opt. Elevator  
on First Floor



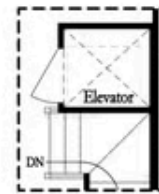
Opt. External Fireplace



Opt. Linear Fireplace



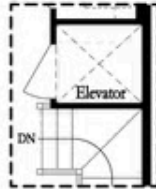
Opt. Fireplace



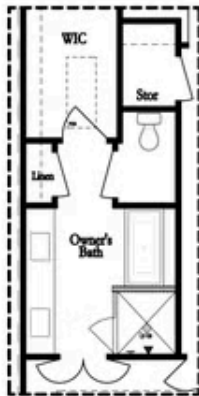
Opt. Elevator  
on Second Floor

Want to Know More  
About This Home?

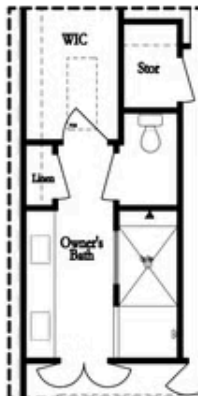
CONTACT OUR COMMUNITY SALES MANAGER  
Call Us @ 470.514.6999



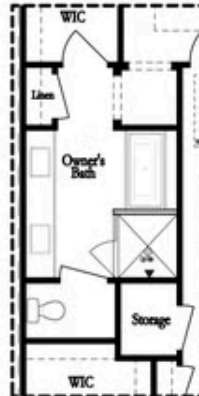
Opt. Elevator  
on Third Floor



Opt. Free Standing  
Tub w/ Shower



Opt. Walk-Through Shower



Opt. Free Standing  
Tub w/ Shower



Opt. Walk-Through Shower

Want to Know More  
About This Home?

CONTACT OUR COMMUNITY SALES MANAGER  
Call Us @ 470.514.6999