



PRICED AT
\$548,850

 2517 Sq Ft

 3 Beds

 4.0 Baths

 2 Car Garage

 3.0 Story

Jacobsen II plan - UNDER CONSTRUCTION, Framing now! New Gated Master Planned Community is beautiful Peachtree Corners. Neighborhood backs up to Chattahoochee River. 1 mile to The Forum Shopping & Restaurants in an amazing location. Gated community for increased privacy, surrounded by beautiful lush trees with walking trails planned to line the entire community. Luxury state-of-the-art amenity package with Swim, Fitness, Parks, Open Lawns, multiple Pickleball courts, gathering Clubhouse & more! A rare opportunity that won't last! For GPS, please use 4411 E Jones Bridge Road - Peachtree Corners, GA 30092

**Want to Know More
About This Home?**

CONTACT OUR COMMUNITY SALES MANAGER
Call Us @ 470.514.6999



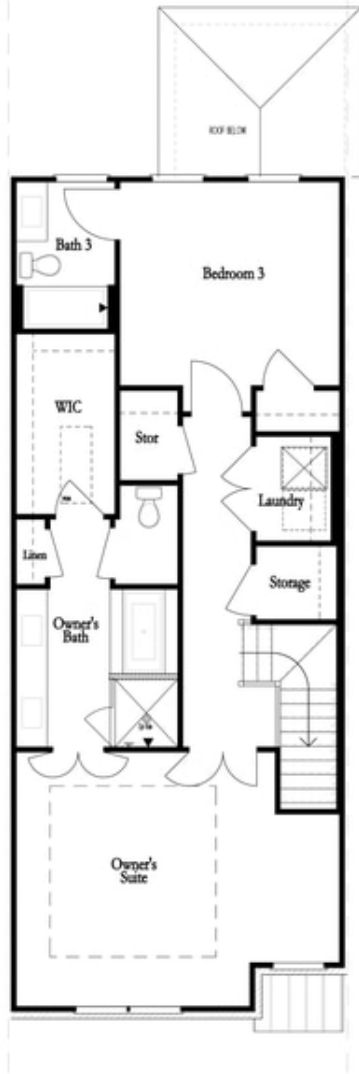
FIRST FLOOR



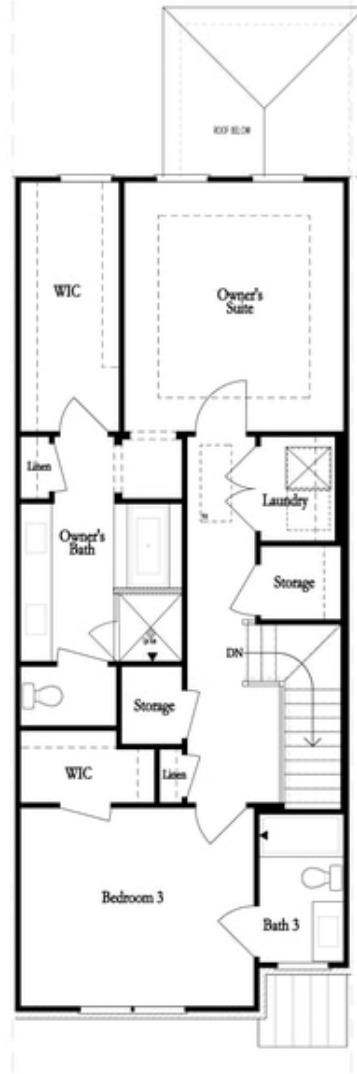
SECOND FLOOR

**Want to Know More
About This Home?**

CONTACT OUR COMMUNITY SALES MANAGER
Call Us @ 470.514.6999



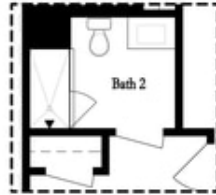
THIRD FLOOR
 OWNER'S FRONT



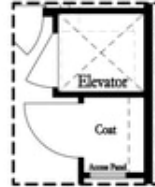
THIRD FLOOR
 OWNER'S REAR

**Want to Know More
 About This Home?**

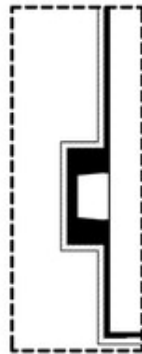
CONTACT OUR COMMUNITY SALES MANAGER
 Call Us @ 470.514.6999



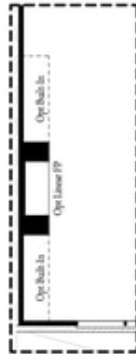
*Opt. Shower
 on First Floor Bath*



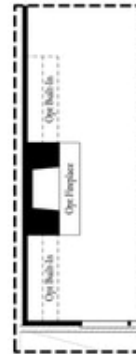
*Opt. Elevator
 on First Floor*



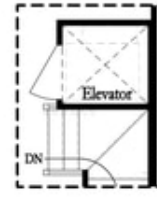
Opt. External Fireplace



Opt. Linear Fireplace



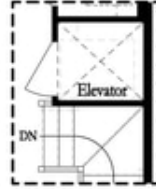
Opt. Fireplace



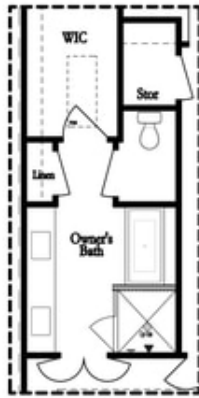
*Opt. Elevator
 on Second Floor*

**Want to Know More
 About This Home?**

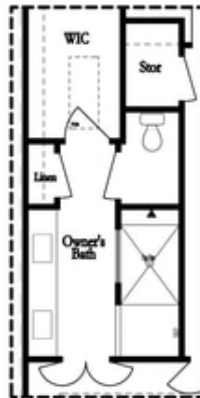
CONTACT OUR COMMUNITY SALES MANAGER
 Call Us @ 470.514.6999



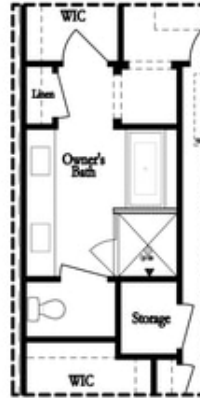
*Opt. Elevator
 on Third Floor*



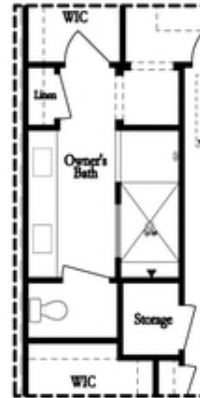
*Opt. Free Standing
 Tub w/ Shower*



Opt. Walk-Through Shower



*Opt. Free Standing
 Tub w/ Shower*



Opt. Walk-Through Shower

**Want to Know More
 About This Home?**

CONTACT OUR COMMUNITY SALES MANAGER
 Call Us @ 470.514.6999