



PRICED AT
\$707,080

 2201 Sq Ft

 3 Beds

 3.5 Baths

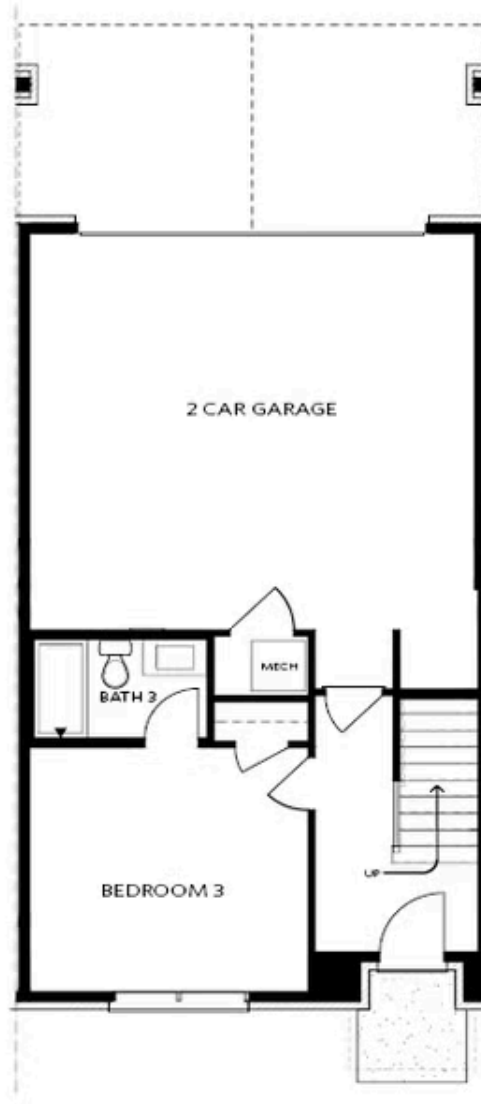
 2 Car Garage

 3.0 Story

END UNIT TOWNHOME - looking for low maintenance living in an exuberant Master-Planned Community? 3-Side Brick with an overwhelming amount of natural light! Our Grayson II Plan is a Spacious 3-story townhomes with private yards, maintained by the HOA. Upon entrance, step into the terrace level with a full bedroom & bathroom. Perfect for guests, or as multipurpose space! 2-car garage with 2-car adjacent driveway. 4 parking spaces for approved vehicles. Heading up to the main floor, your will discover an oversized living area that blends with sunroom and back porch. Many ways to set up furniture on this level due to the open concept nature; adaptable and flexible. Bright light from oversized windows. Gas fireplace in living and half bath for guest use. Upstairs is a nicely sized Owner's Suite with walk-in closet and Luxury Owner's Bathroom. Laundry upstairs in hall and secondary bedroom roommate style. Great plans at great prices!! You will have easy access to our full-sized pool, 2-story clubhouse with full gym, and Amenity Area. New Gated Master Planned Community backing up to the Chattahoochee River, 1 mile from The Forum w/shops & restaurants, in the heart of Peachtree Corners. Fabulous amenity package includes clubhouse, park ...

**Want to Know More
About This Home?**

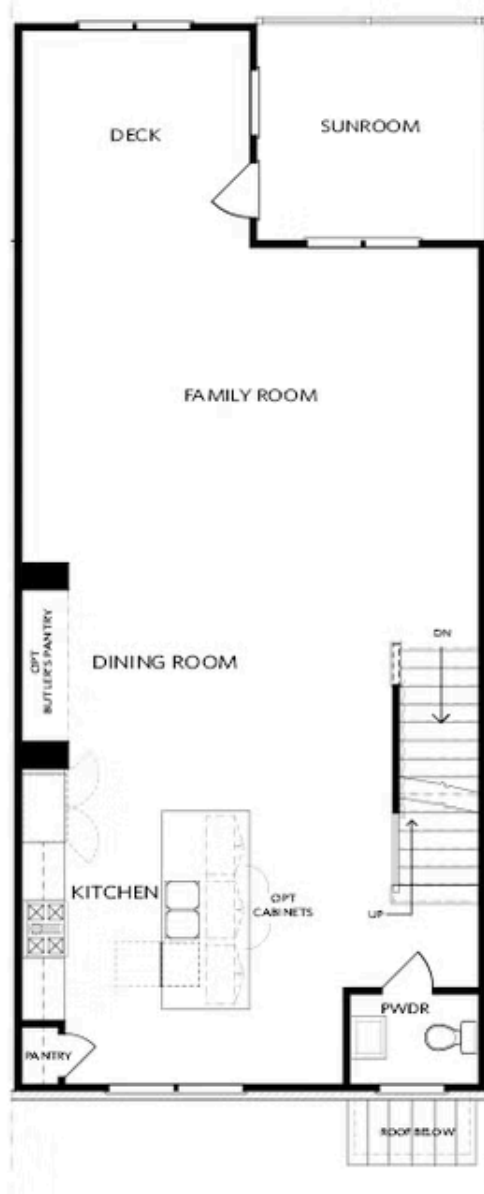
CONTACT OUR COMMUNITY SALES MANAGER
Call Us @ 470.514.6999



Elevation T2

Want to Know More
About This Home?

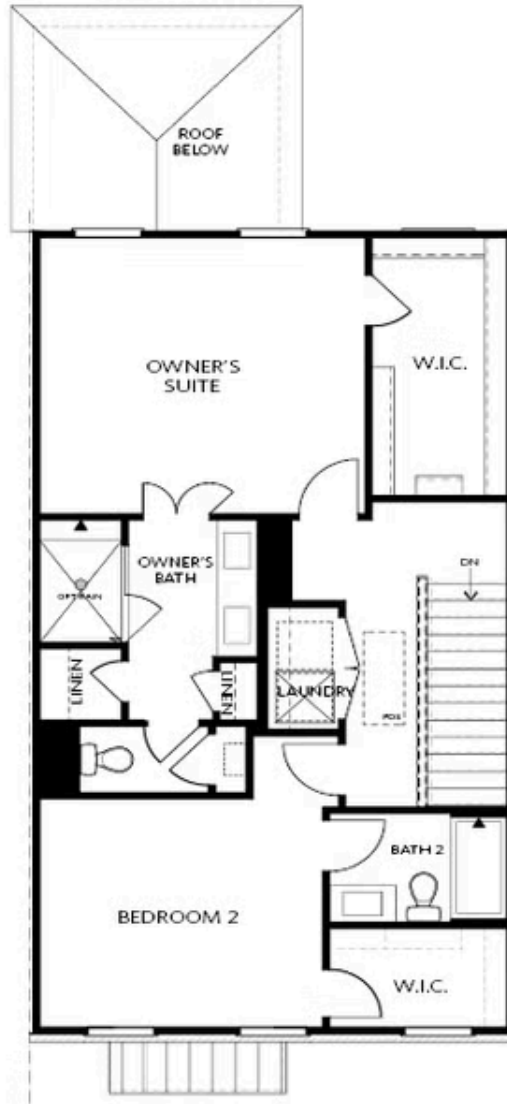
CONTACT OUR COMMUNITY SALES MANAGER
Call Us @ 470.514.6999



Elevation T2

Want to Know More
About This Home?

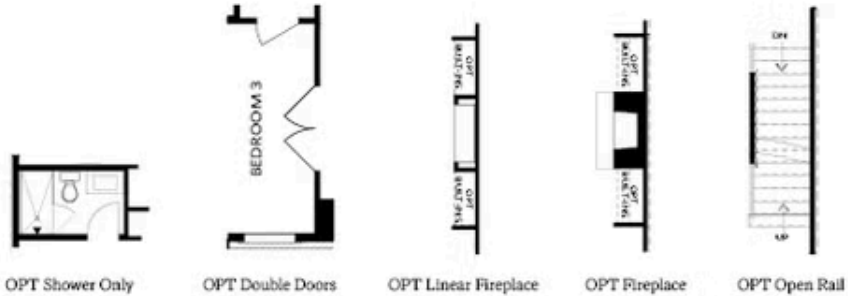
CONTACT OUR COMMUNITY SALES MANAGER
Call Us @ 470.514.6999



Elevation T2

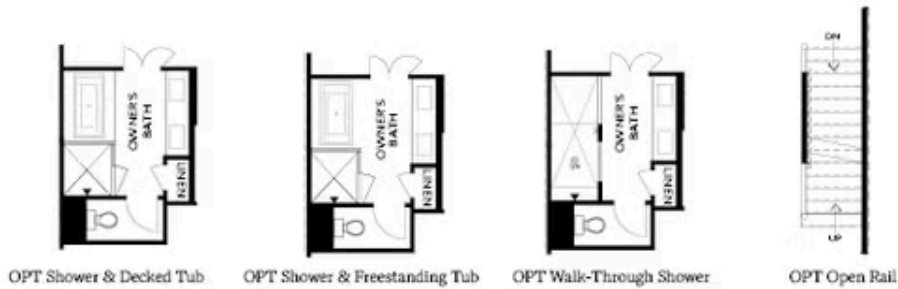
Want to Know More
About This Home?

CONTACT OUR COMMUNITY SALES MANAGER
Call Us @ 470.514.6999



FIRST FLOOR

SECOND FLOOR



THIRD FLOOR

Want to Know More
 About This Home?

CONTACT OUR COMMUNITY SALES MANAGER
 Call Us @ 470.514.6999